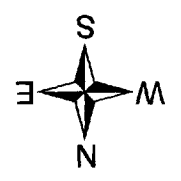


S1/2 SEC. 10 & POR. N1/2 SEC. 15, T02S, R12W, S.M. 185-518



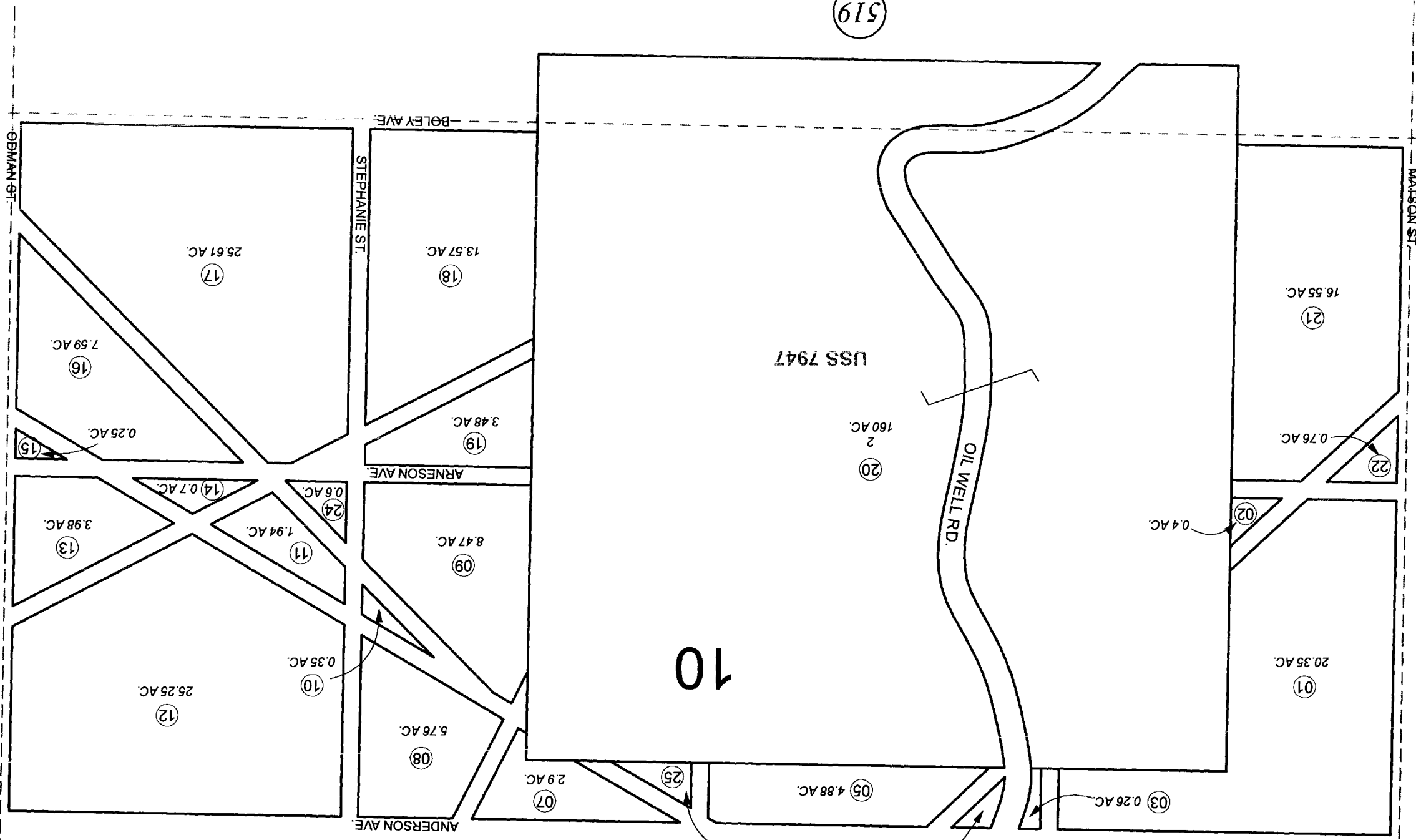
For 2011 assessment roll	
Delete	Add
06.23	24.25
01-05	07-19
(ACREAGE CHANGE)	
21-22	

JANUARY 13, 2011

Assessor's Map  
Kenai Peninsula Borough

US SURVEY 7947

This map is prepared for Kenai Peninsula Borough Assessing Dept. use only and is not intended for conveyance nor is it a survey. Note- Assessor's block Numbers Shown in Ellipses and Parcel Numbers Shown in Circles



10

15

519

513

517

514

498

SON AVE.  
LAND SUBD.  
RES. 93-07  
N AVE.  
RES.

RECORD OF