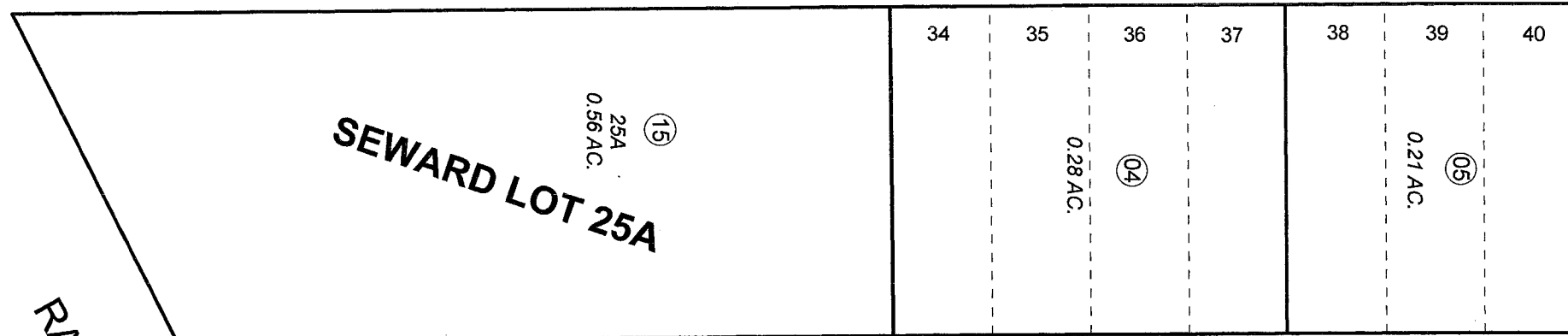


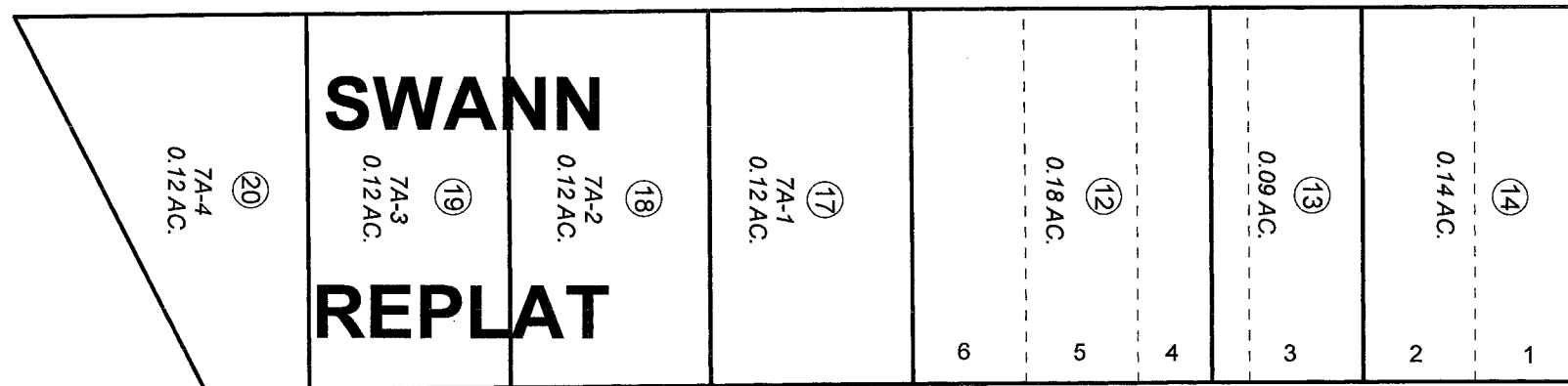
130

SIXTH AVE.



BLOCK 7

RAILWAY AVE.



SWANN
REPLAT

ADAMS ST.

160

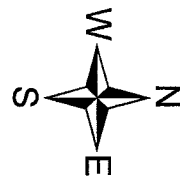
BALLAINE AVE.

170

E

MAY 6, 2009

For 2010 assessment roll		
Delete	Add	Revise
	To	
6,7, 16	17-20	



Assessor's Map
Kenai Peninsula Borough

ORIGINAL TOWNSITE OF SEWARD SW0000001
 ORIGINAL TOWNSITE OF SEWARD REPLAT OF SW0790021
 ORIGINAL TOWNSITE OF SEWARD LINDSEY SW0960023
 SEWARD ORIGINAL TOWNSITE SWANN REPLAT SW2009003

Note- Assessor's block Numbers Shown in Elipses
 Assessor's Parcel Numbers Shown in Circles

This map is prepared
 for Kenai Peninsula
 Borough Assessing Dept.
 use only and is not
 intended for conveyance
 nor is it a survey.