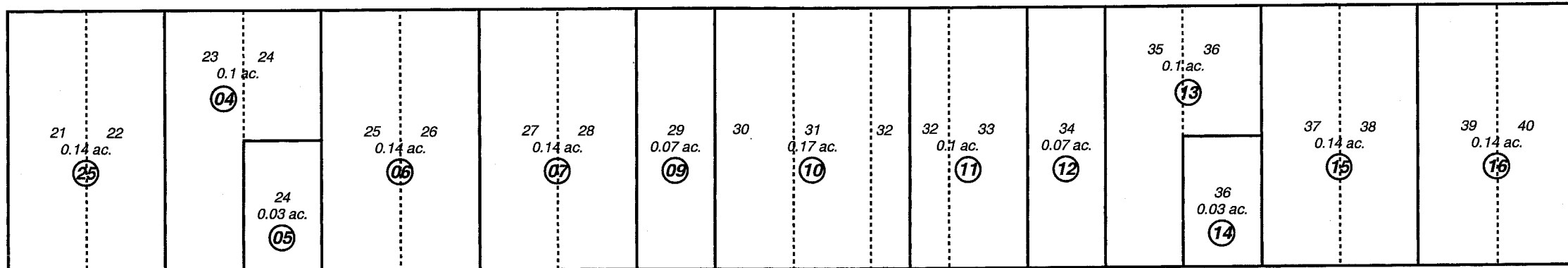


POR. SEC. 10, T01S, R01W, S.M.

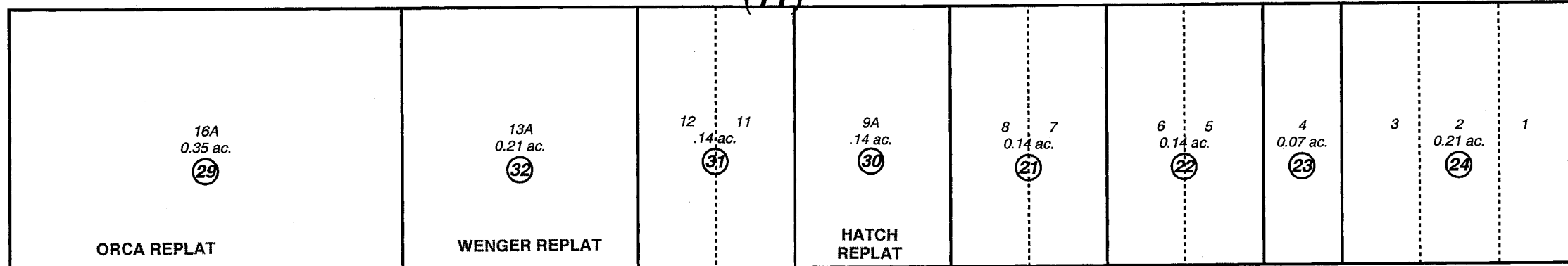
149-050

020

SECOND AVE.



(11)



ORCA REPLAT

WENGER REPLAT

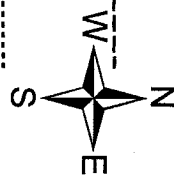
HATCH REPLAT

THIRD AVE.

080

DECEMBER 5, 2006

For 2007 assessment rpl		
Delete	Add	Revise
To		
19	32	



Assessor's Map
Kenai Peninsula Borough

ORIGINAL TOWNSITE OF SEWARD SW0000001
 SEWARD TOWNSITE ORCA REPLAT SW0990003
 SEWARD ORIGINAL TOWNSITE HATCH REPLAT SW2002010
 SEWARD ORIGINAL TOWNSITE WENGER REPLAT SW2006017

Note- Assessor's block Numbers Shown in Elipses
 Assessor's Parcel Numbers Shown in Circles

This map is prepared for Kenai Peninsula Borough Assessing Dept. use only and is not intended for conveyance nor is it a survey.

190

060

WASHINGTON ST.

ADAMS ST.