

POR. SEC. 14 & 23, T02N, R12W, S.M.

137-160

SUBD.

NO. 5

SHEPHERD CRET.

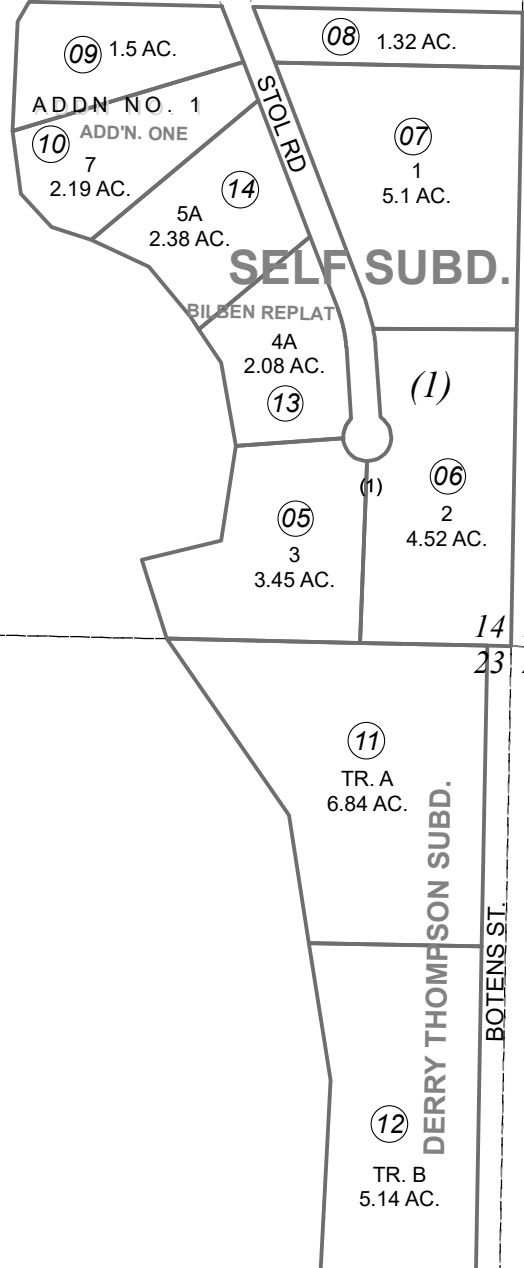
051

NO. 4

(3)

ENCELEWSKI LAKE

050



050

050

050

(1)

RIDGE ST

14 13  
23 24

DECEMBER 9, 2021

For 2022 assessment roll

Delete	Add	Revise
	To	
02,03		
04	13,14	



0 100 200 400 Feet

Assessor's Map  
Kenai Peninsula Borough

SELF SUB KN0720070  
 SELF SUB ADDN NO 1 KN0770192  
 DERRY THOMPSON SUB KN2005008  
 SELF SUB BILBEN REPLAT KN2021089

This map is prepared  
 for Kenai Peninsula  
 Borough Assessing Dept.  
 use only and is not  
 intended for conveyance  
 nor is it a survey.

Note- Assessor's block Numbers Shown in Ellipses  
 Assessor's Parcel Numbers Shown in Circles