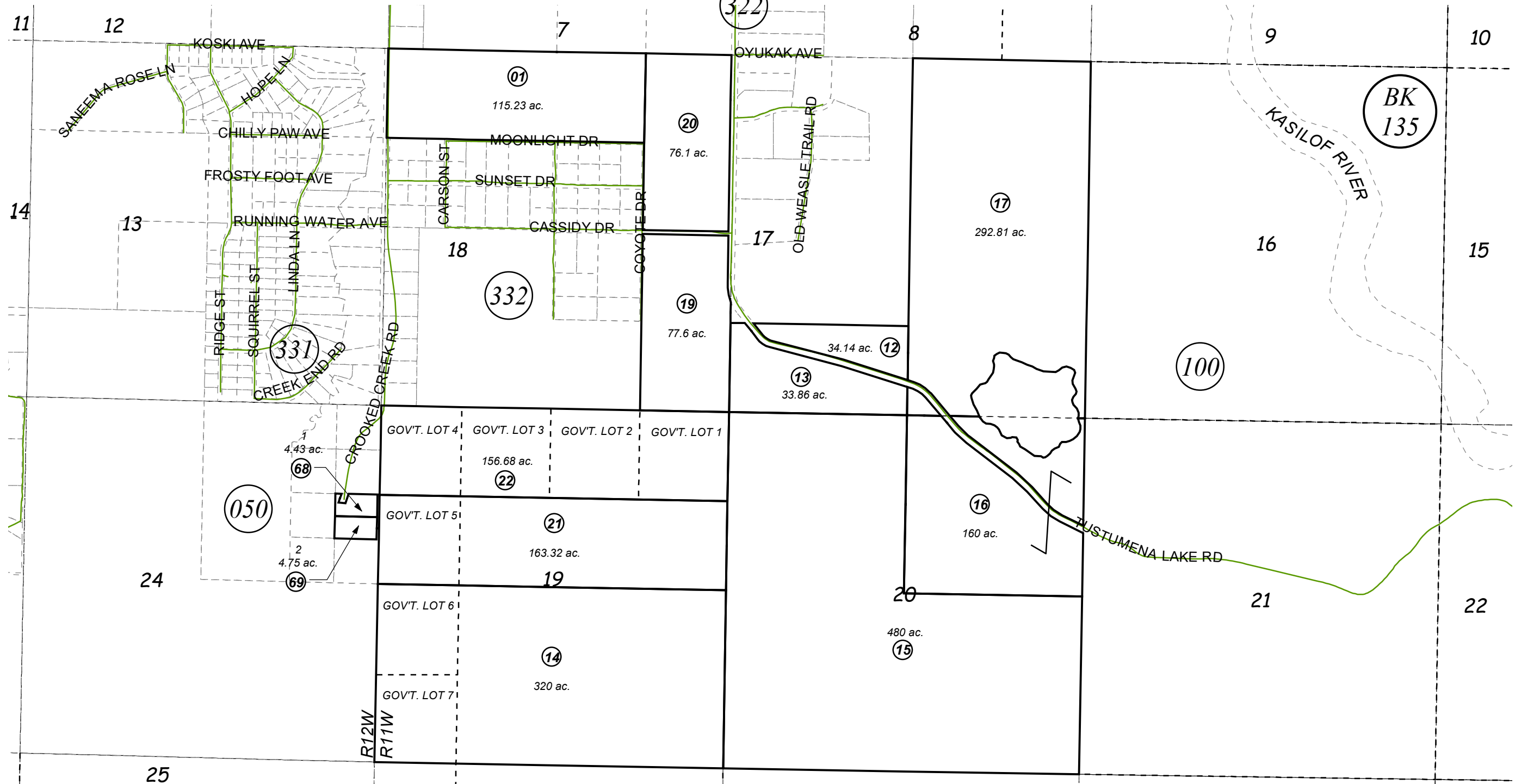


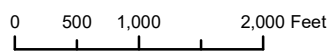
POR. SEC. 17-20, T02N, R11W, S.M.

137-060



DECEMBER 27, 2018

For 2019 assessment roll		
Delete	Add	Revise
To		
68,69		



Assessor's Map
Kenai Peninsula Borough

KILFOYLE SUB KN2018088

This map is prepared for Kenai Peninsula Borough Assessing Dept. use only and is not intended for conveyance nor is it a survey.
Note- Assessor's block Numbers Shown in Elipses
Assessor's Parcel Numbers Shown in Circles