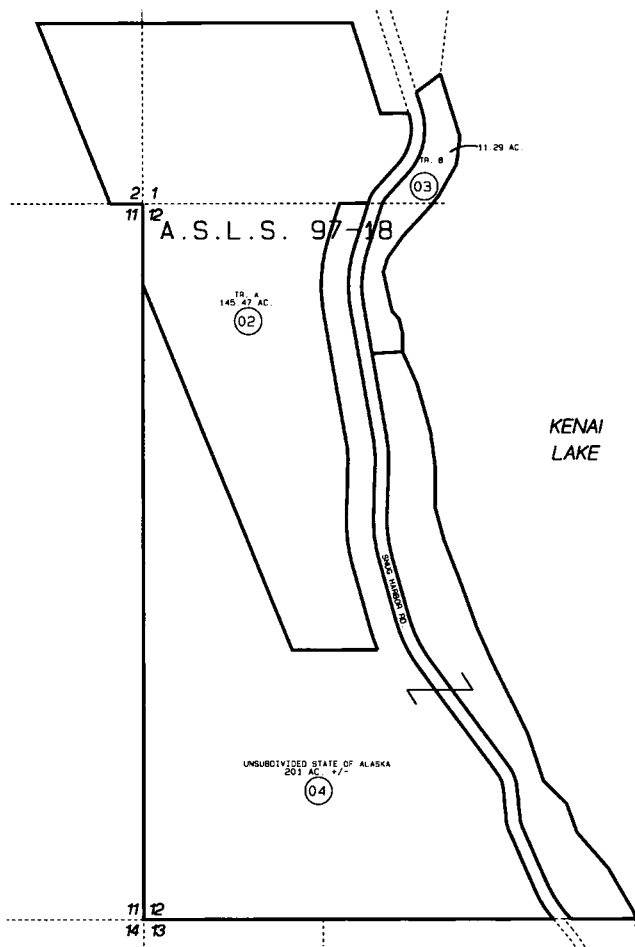


122



011

011

013



DATE: APRIL 22, 1998

FOR 1998 ASSESSMENT ROLL		
DELETE	ADD	REVISED
TO		
1	2-4	

Assessor's Map
Kenai Peninsula Borough

ALASKA STATE LAND SURVEY 97-18 SW970022

THIS MAP IS PREPARED FOR KENAI PENINSULA BOROUGH ASSESSING DEPT. USE ONLY AND IS NOT INTENDED FOR ANY OTHER USE OR REPRESENTATION

NOTE - Assessor's Block Numbers Shown In Ellipses
Assessor's Parcel Numbers Shown In Circles