

149-030

POR. SEC. 10, T01S, R01W, S.M.

BK
148

JEFFERSON ST.

FIRST AVE.

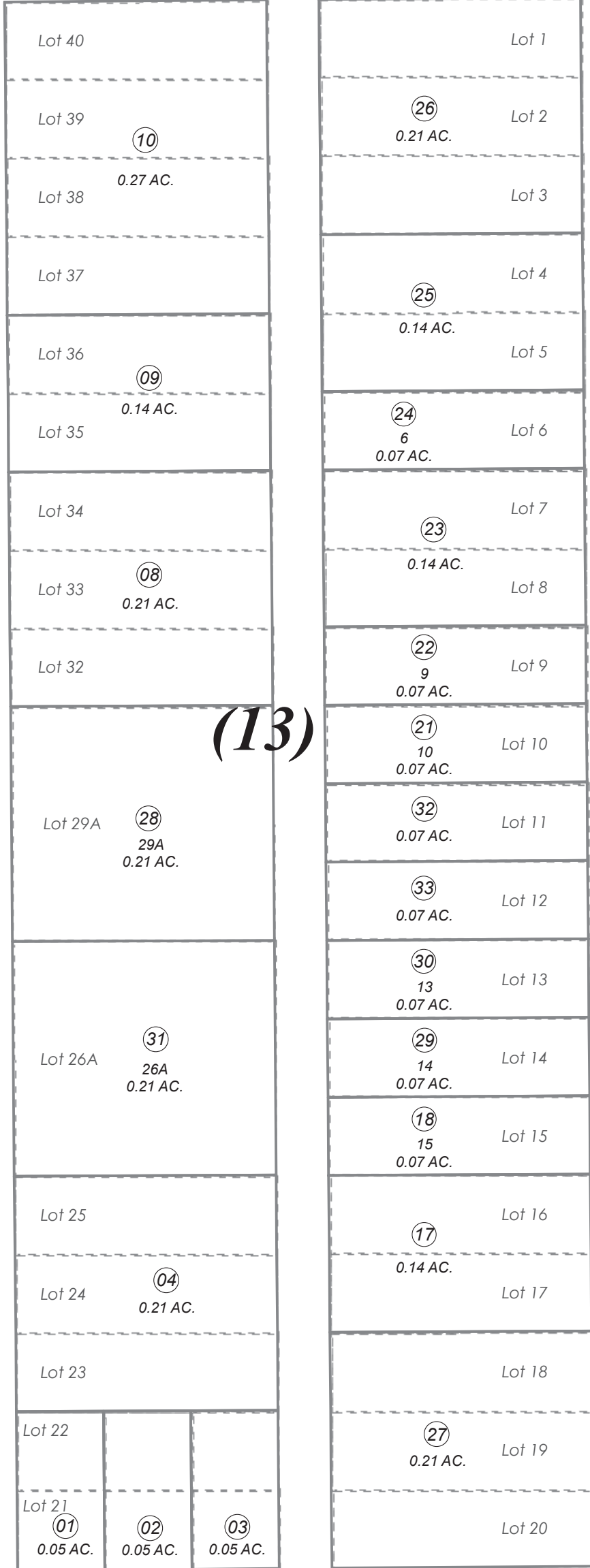
SECOND AVE.

ADAMS ST.

210

060

020



This map is prepared for Kenai Peninsula Borough Assessing Dept. use only and is not intended for conveyance nor is it a survey.

ORIGINAL TOWNSITE OF SEWARD SW0000001
ORIGINAL TOWNSITE OF SEWARD HAFEMEISTER REPLAT SW0980027
SEWARD ORIGINAL TOWNSITE WILSON REPLAT SW2012010

Note- Assessor's block Numbers Shown in Ellipses
Assessor's Parcel Numbers Shown in Circles

Assessor's Map
Kenai Peninsula Borough



0 10 20 40 Feet

OCTOBER 3, 2018

For 2019 assessment roll	
Delete	Add
	Revise
To	
20	32, 33