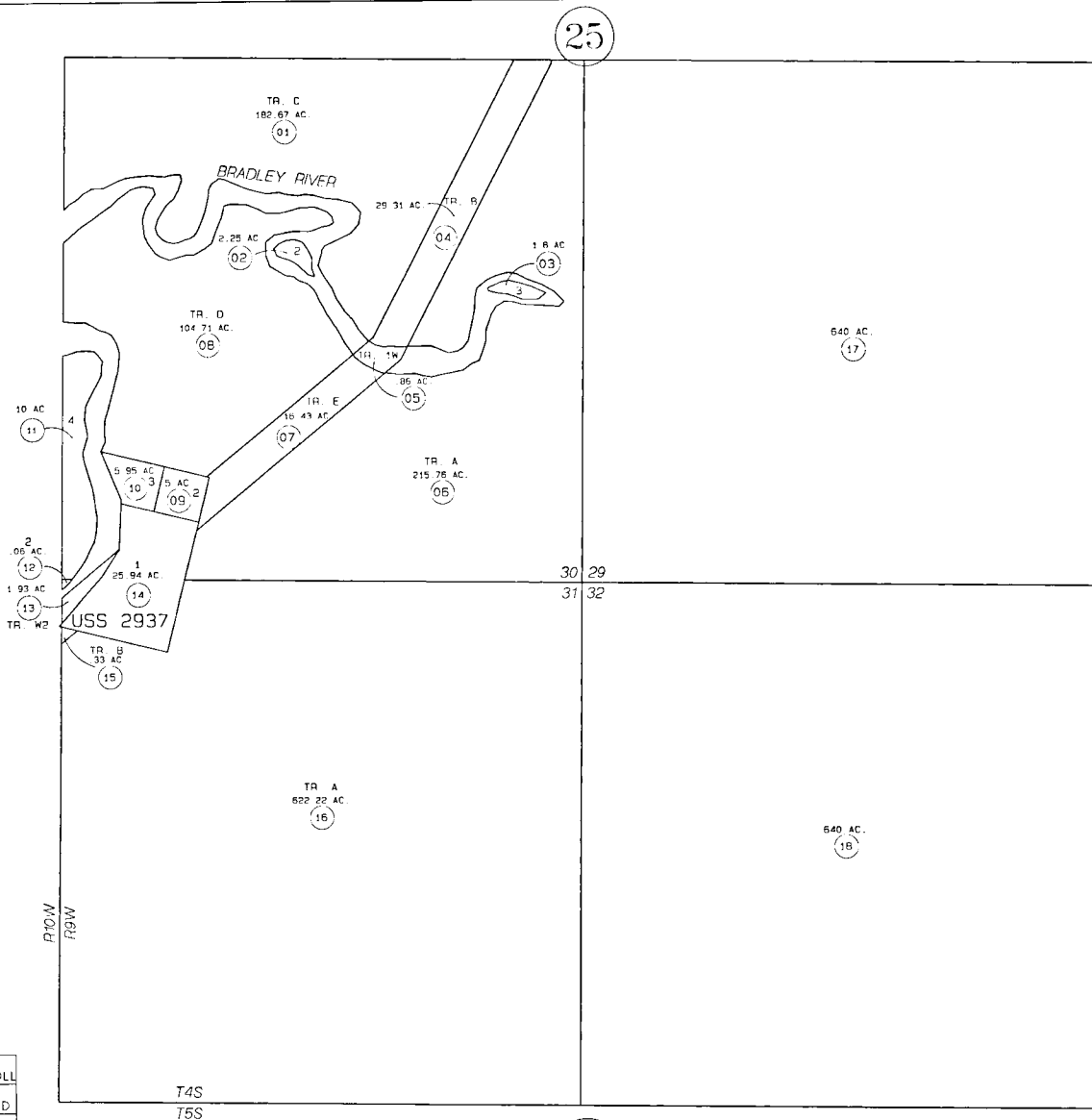


185-540  
 SEC. 29-32,  
 T4S, R9W  
 SEWARD MERIDIAN



530

25

25

BK.  
193

U.S.S. 2937 HNM 02937  
 A.S.L.S. 91-38 HNM 920016

DATE: OCT. 12, 1995  
 FOR 1996 ASSESSMENT ROLL  
 DELETE ADD REVISED

TO  
 REVISED  
 PAGE

Assessor's Map  
 Kenai Peninsula Borough

THIS MAP IS PREPARED  
 FOR KENAI PENINSULA  
 BOROUGH ASSESSING DEPT  
 USE ONLY AND IS NOT  
 INTENDED FOR ANY  
 OTHER USE OR REPRESENTATION

NOTE - Assessor's Block Numbers Shown in Ellipses  
 Assessor's Parcel Numbers Shown in Circles