

2

071

070

(PORTION
U.S.S. 5105
TR. A)

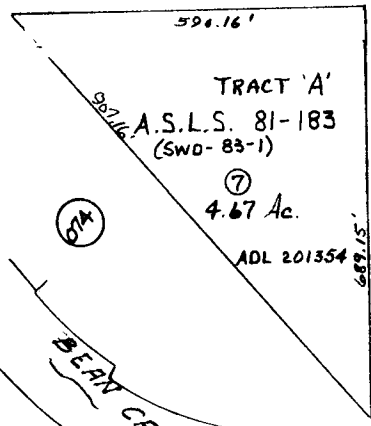
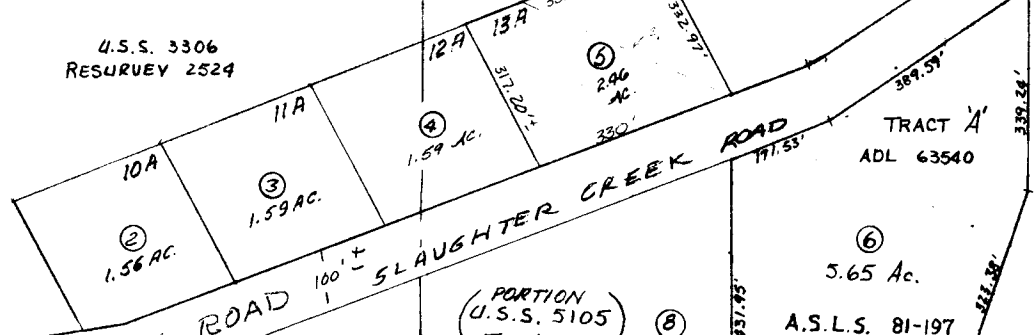
SEC. 29 SEC. 28
N 1/4 COR

SLAUGHTER CREEK GROUP

U.S.S. 3306
RESURVEY 2524

RIFLE RANGE

ASLS 91-6
TR A ADL 201353
① 13.84 AC±



TRACT 'A'
ADL 63540

⑥ 5.65 Ac.
A.S.L.S. 81-197
(SWD-83-2)

(PORTION
U.S.S. 5105
TR. A)

⑧ 3.76 AC±

BEAN CREEK ROAD 100' ±

KENAI RIVER

⑩ 0.57 AC±

ASLS 91-6
⑨ TR B
ADL 201307
4.93 AC±

074

074

070