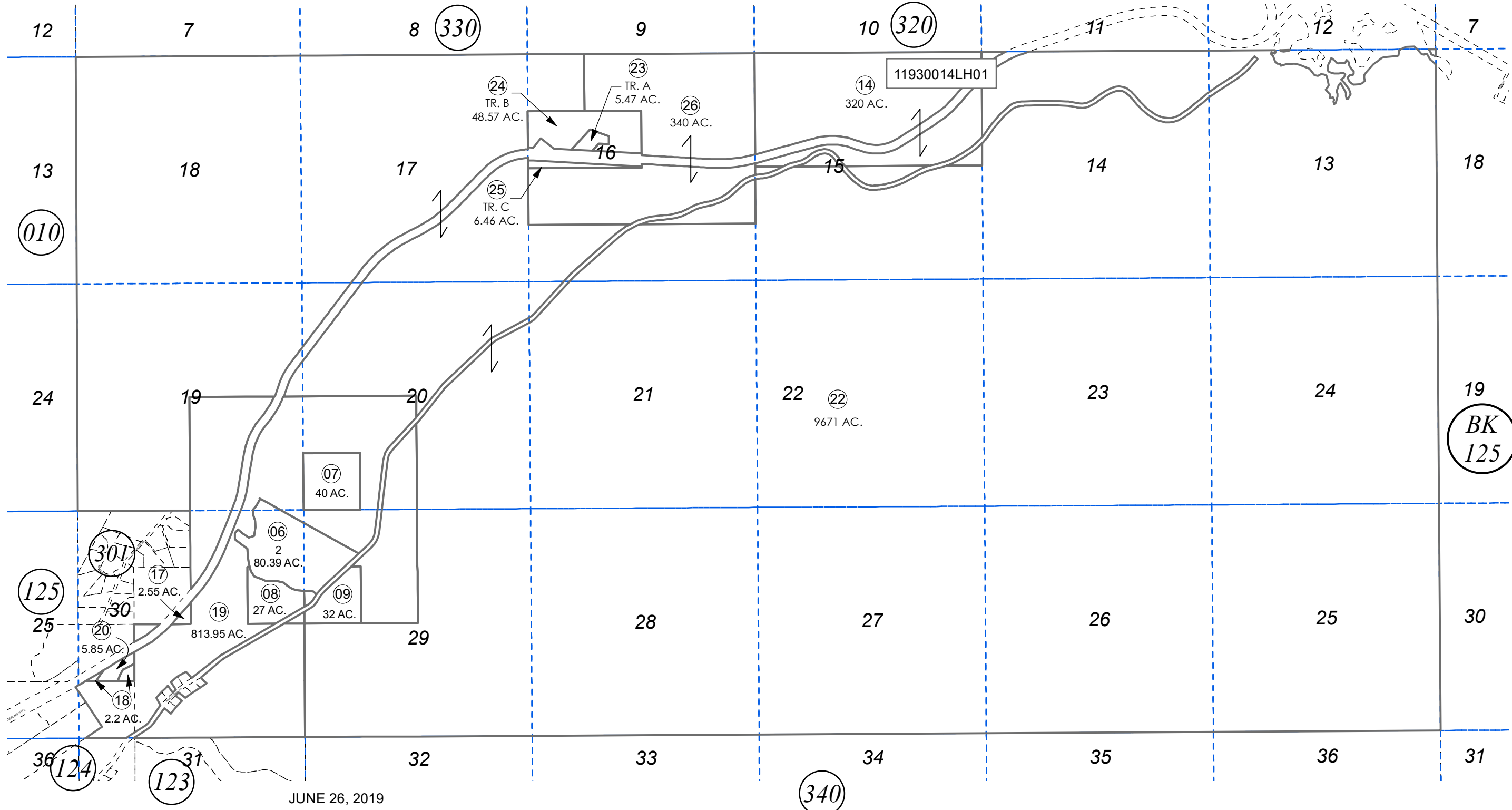


SEC. 13-30, T05N, R02W, S.M.

119-300



JUNE 26, 2019

For 2020 assessment roll		
Delete	Add	Revise
To		
21	23-26	

Assessor's Map
Kenai Peninsula Borough

U.S. SURVEY 7937 SW0007937
ALASKA STATE LAND SURVER 2014-26 SW2019007

This map is prepared for Kenai Peninsula Borough Assessing Dept. use only and is not intended for conveyance nor is it a survey.
Note- Assessor's block Numbers Shown in Elipses
Assessor's Parcel Numbers Shown in Circles