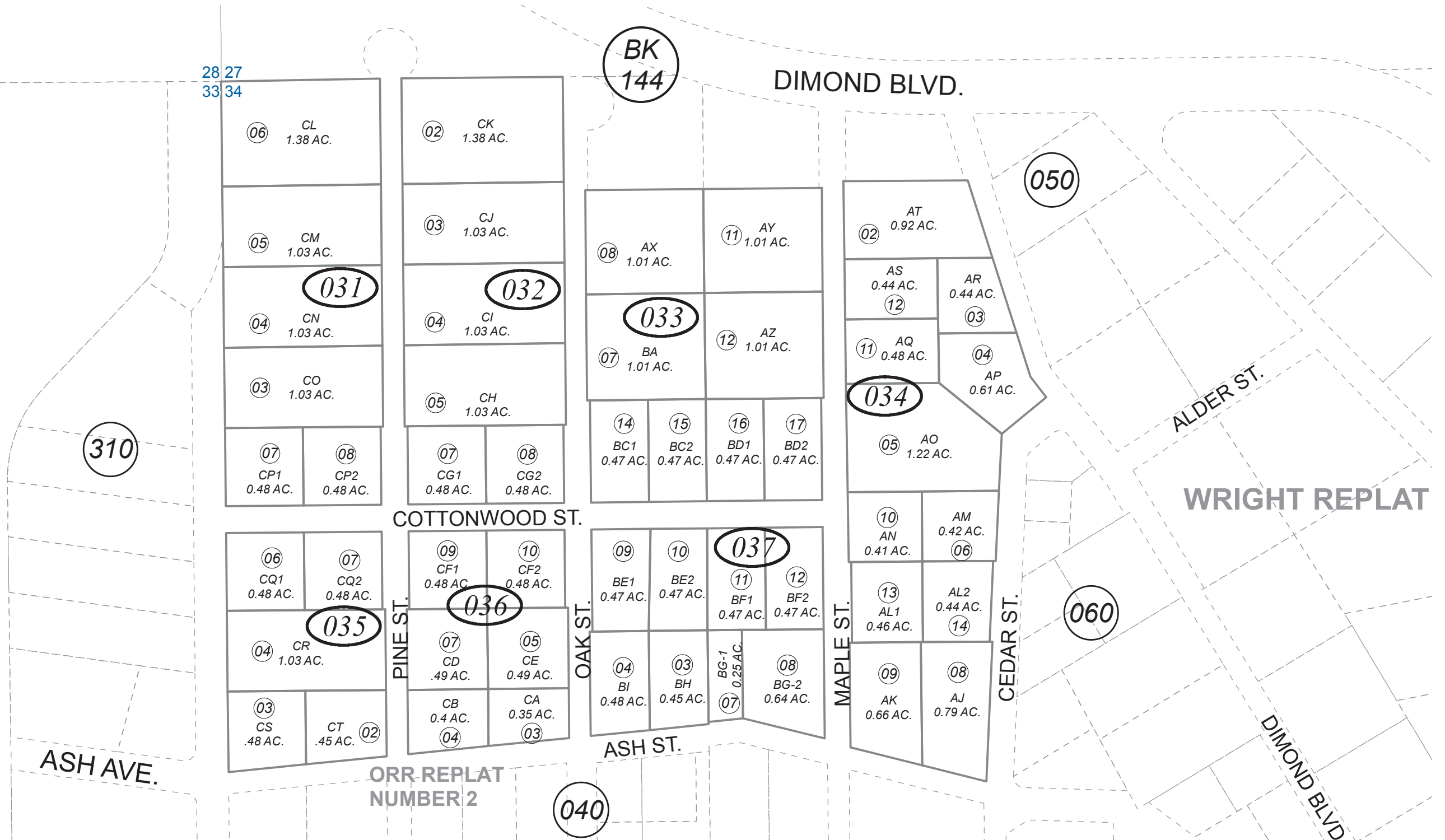


FOREST ACRES
AFOGNAK ADDN.



28 27
33 34

BK
144

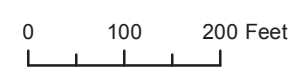
050

310

WRIGHT REPLAT

060

040



OCTOBER 13, 2016

For 2017 assessment roll		
Delete	Add	Revise
03309, 03310, 03401	144030+	

Assessor's Map
Kenai Peninsula Borough

FOREST ACRES SUB SW0000017
 FOREST ACRES SUB OF LOT-AL SW0970017
 FOREST ACRES SUB SCHAFFER ADDN SW2000007
 FOREST ACRES SUB AFOGNAK ADDN SW2006011

This map is prepared for Kenai Peninsula Borough Assessing Dept. use only and is not intended for conveyance nor is it a survey.
 Note- Assessor's block Numbers Shown in Ellipses
 Assessor's Parcel Numbers Shown in Circles