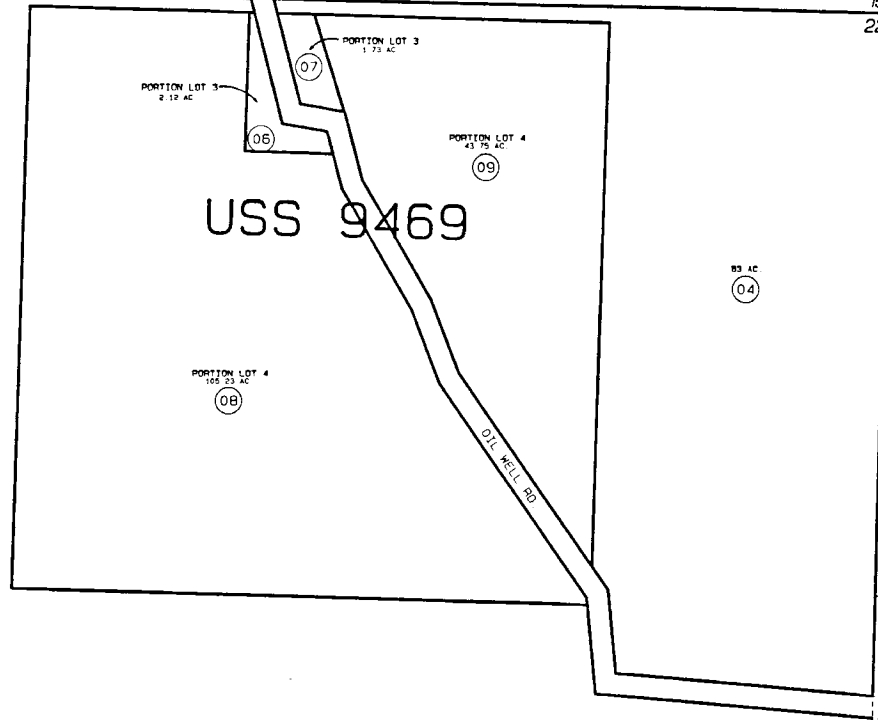


SEC. 22, T2S, R13W,
SEWARD MERIDIAN

185-054



050

050

050

DATE: SEPT. 13, 1996

FOR 1997 ASSESSMENT ROLL

DELETE	ADD	REVISED	21 22
			28 27
3	6-9		

Assessor's Map
Kenai Peninsula Borough

THIS MAP IS PREPARED
FOR KENAI PENINSULA
BOROUGH ASSESSING DEPT.
USE ONLY AND IS NOT
INTENDED FOR ANY
OTHER USE OR REPRESENTATION

NOTE - Assessor's Block Numbers Shown In Ellipses
Assessor's Parcel Numbers Shown In Circles

