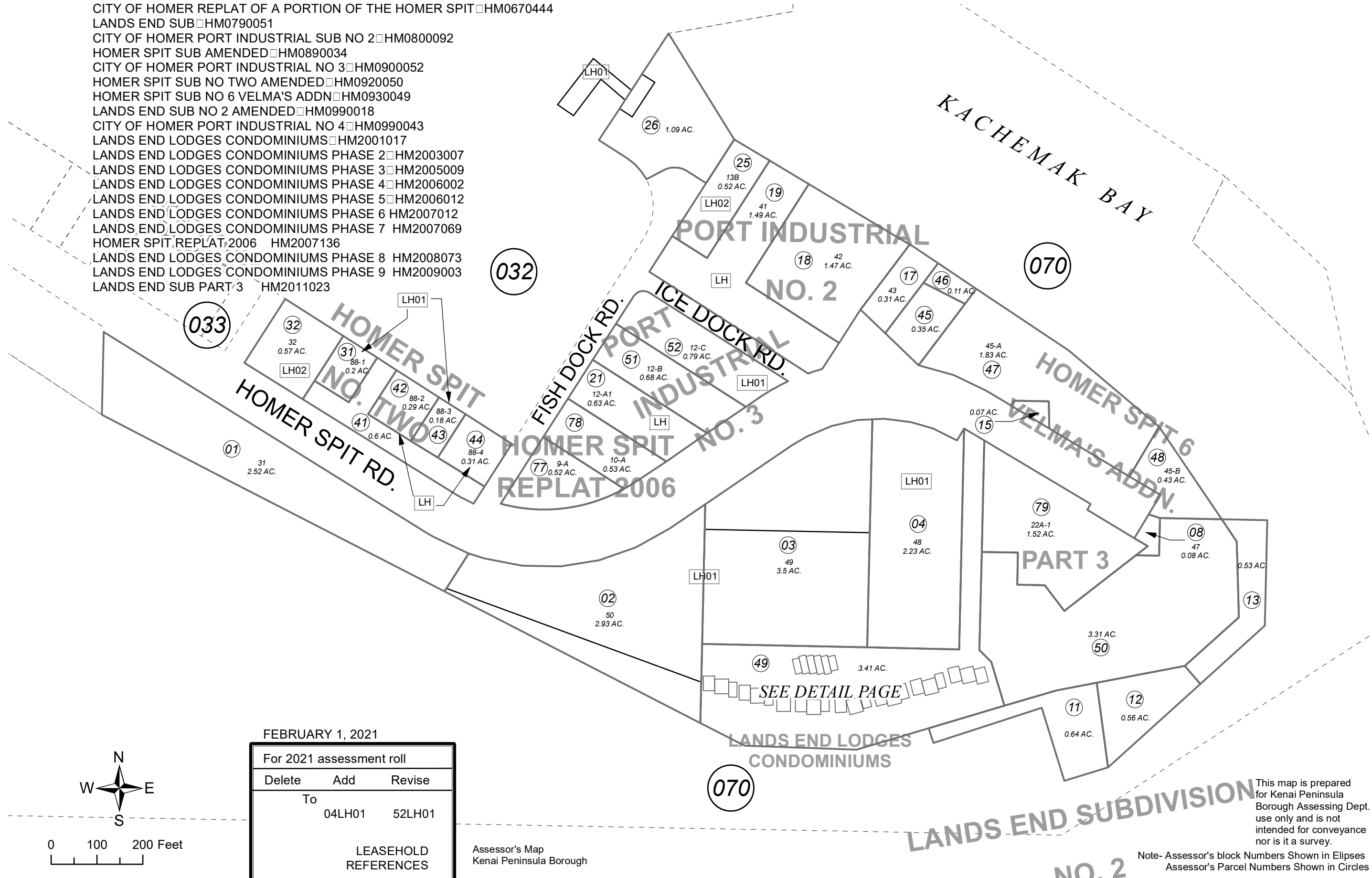


POR. SEC. 1, T07S, R13W, S.M.

181-034

CITY OF HOMER REPLAT OF A PORTION OF THE HOMER SPIT HM0670444
 LANDS END SUB HM0790051
 CITY OF HOMER PORT INDUSTRIAL SUB NO 2 HM0800092
 HOMER SPIT SUB AMENDED HM0890034
 CITY OF HOMER PORT INDUSTRIAL NO 3 HM0900052
 HOMER SPIT SUB NO TWO AMENDED HM0920050
 HOMER SPIT SUB NO 6 VELMA'S ADDN HM0930049
 LANDS END SUB NO 2 AMENDED HM0990018
 CITY OF HOMER PORT INDUSTRIAL NO 4 HM0990043
 LANDS END LODGES CONDOMINIUMS HM2001017
 LANDS END LODGES CONDOMINIUMS PHASE 2 HM2003007
 LANDS END LODGES CONDOMINIUMS PHASE 3 HM2005009
 LANDS END LODGES CONDOMINIUMS PHASE 4 HM2006002
 LANDS END LODGES CONDOMINIUMS PHASE 5 HM2006012
 LANDS END LODGES CONDOMINIUMS PHASE 6 HM2007012
 LANDS END LODGES CONDOMINIUMS PHASE 7 HM2007069
 HOMER SPIT REPLAT 2006 HM2007136
 LANDS END LODGES CONDOMINIUMS PHASE 8 HM2008073
 LANDS END LODGES CONDOMINIUMS PHASE 9 HM2009003
 LANDS END SUB PART 3 HM2011023



033

032

070

070

FEBRUARY 1, 2021

For 2021 assessment roll

| | | |
|--------|-----|--------|
| Delete | Add | Revise |
|--------|-----|--------|

| | | |
|----|--------|--------|
| To | 04LH01 | 52LH01 |
|----|--------|--------|

LEASEHOLD REFERENCES

Assessor's Map
Kenai Peninsula Borough

SEE DETAIL PAGE

This map is prepared for Kenai Peninsula Borough Assessing Dept. use only and is not intended for conveyance nor is it a survey.

Note- Assessor's block Numbers Shown in Ellipses Assessor's Parcel Numbers Shown in Circles