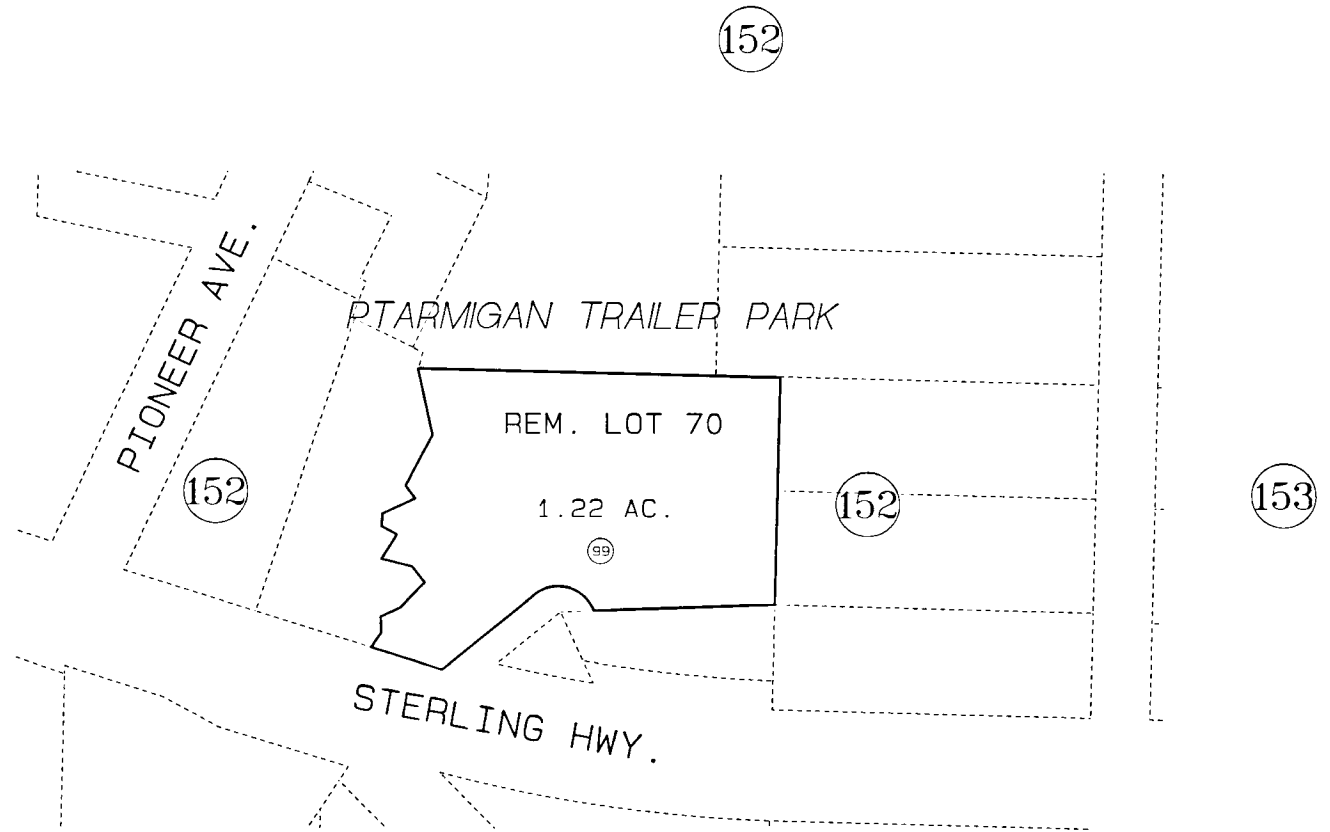


PORTION OF SEC. 19, T6S, R13W, SEWARD MERIDIAN

175-154

- 1 SPACE O1
- 2 SPACE O2
- 3 SPACE O3
- 4 SPACE O4
- 5 SPACE O5



DATE: OCT. 24, 1996

FOR 1997 ASSESSMENT ROLL

DELETE	ADD	REVISED

TO

NEW PAGE

Assessor's Map
Kenai Peninsula Borough

BUNNELLS SUB HM000024

THIS MAP IS PREPARED
FOR KENAI PENINSULA
BOROUGH ASSESSING DEPT.
USE ONLY AND IS NOT
INTENDED FOR ANY
OTHER USE OR REPRESENTATION

NOTE - Assessor's Block Numbers Shown In Ellipses
Assessor's Parcel Numbers Shown In Circles