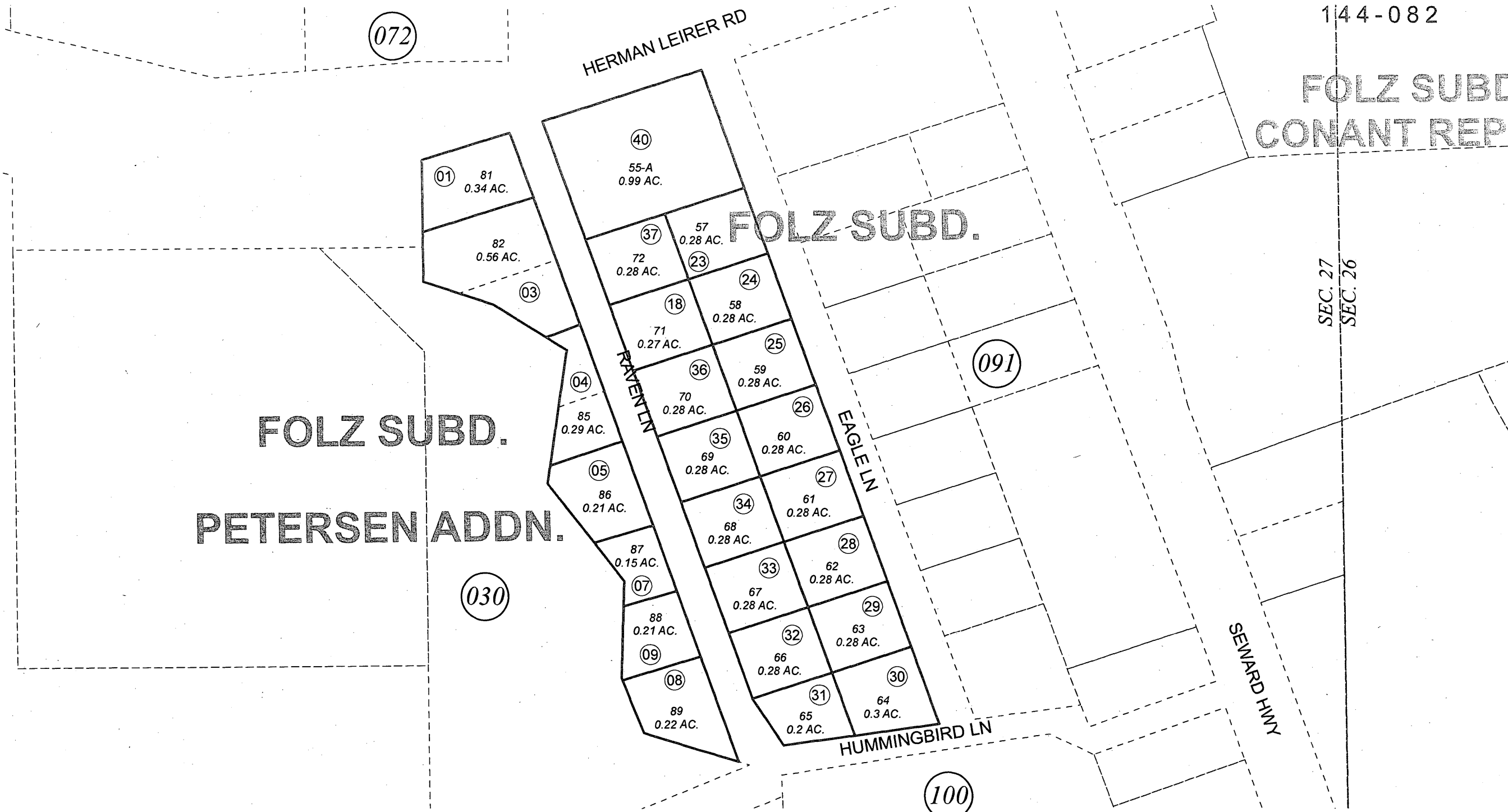


POR. SEC. 27, T01N, R01W, S.M.

144-081
144-082



JUNE 8, 2012



For 2013 assessment roll		
Delete	Add	Revise
To		18
	(ACREAGE CHANGE)	

Assessor's Map
Kenai Peninsula Borough

FOLZ SUB REVISED SW0000024
 RECORD OF SURVEY FOLZ REVISED LOTS 55 & 56 SW0890013RS
 FOLZ SUB REVISED SBS ADDN SW0980009
 RECORD OF SURVEY FOLZ REVISED LOTS 71 & 72 SW2012003RS

This map is prepared for Kenai Peninsula Borough Assessing Dept. use only and is not intended for conveyance nor is it a survey.

Note- Assessor's block Numbers Shown in Ellipses
Assessor's Parcel Numbers Shown in Circles