

POR. SE1/4 SEC. 27, T01N, R13W, S.M.

139-101

COOK
INLET

100

COREA BEND SUBD.

#3

30
TR. B1
6.89 ac.

#5

48
TR. B2B
25.54 ac.

#4
TR. A1
5 ac.

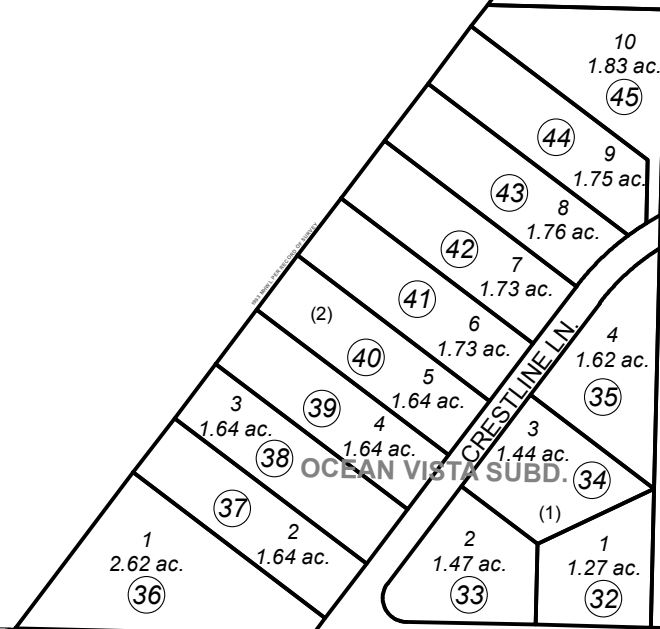
46

100

TR. D
59.3 ac.
29

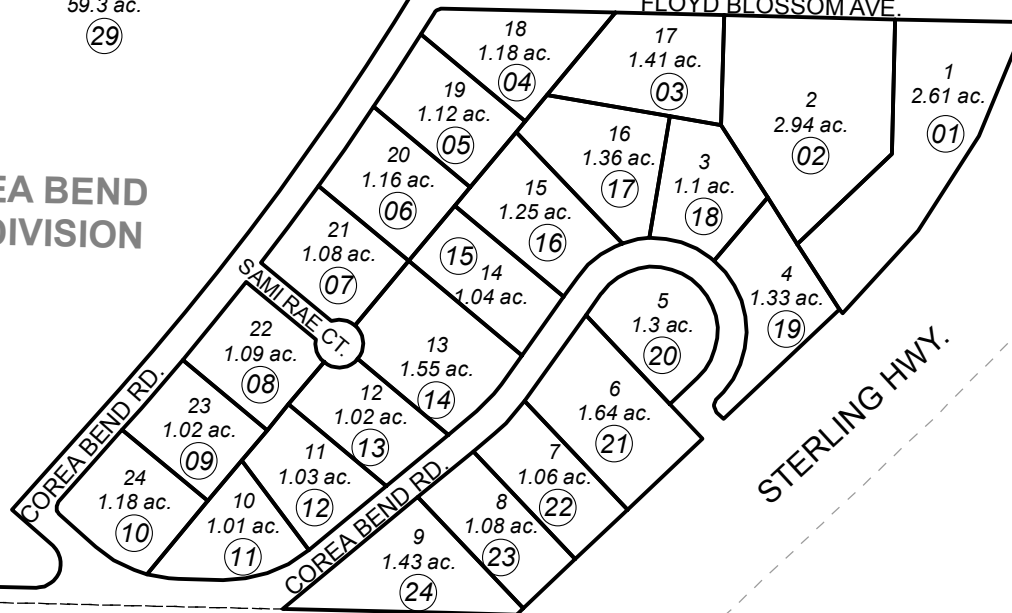
COREA BEND
SUBDIVISION

FLOYD BLOSSOM AVE.



OCEAN VISTA SUBD.

CRESTLINE LN.



COREA BEND SUBDIVISION

COREA BEND RD.

SAMI RAE CT.

COREA BEND RD.

STERLING HWY.

JANNY'S AVE.

HAWKINS VIEW SUBDIVISION

27 26
34 25

100



0 200 400 Feet

DECEMBER 21, 2015

For 2016 assessment roll

Delete Add Revise

To

28,47 48

Assessor's Map
Kenai Peninsula Borough

COREA BEND SUB HM0850015
 COREA BEND SUB #2 HM0990041
 COREA BEND SUB #3 HM2003053
 COREA BEND SUB #4 HM2007116
 OCEAN VISTA SUB AMENDED HM2010007
 COREA BEND SUB #5 HM2015034

This map is prepared for Kenai Peninsula Borough Assessing Dept. use only and is not intended for conveyance nor is it a survey.
 Note- Assessor's block Numbers Shown in Ellipses
 Assessor's Parcel Numbers Shown in Circles