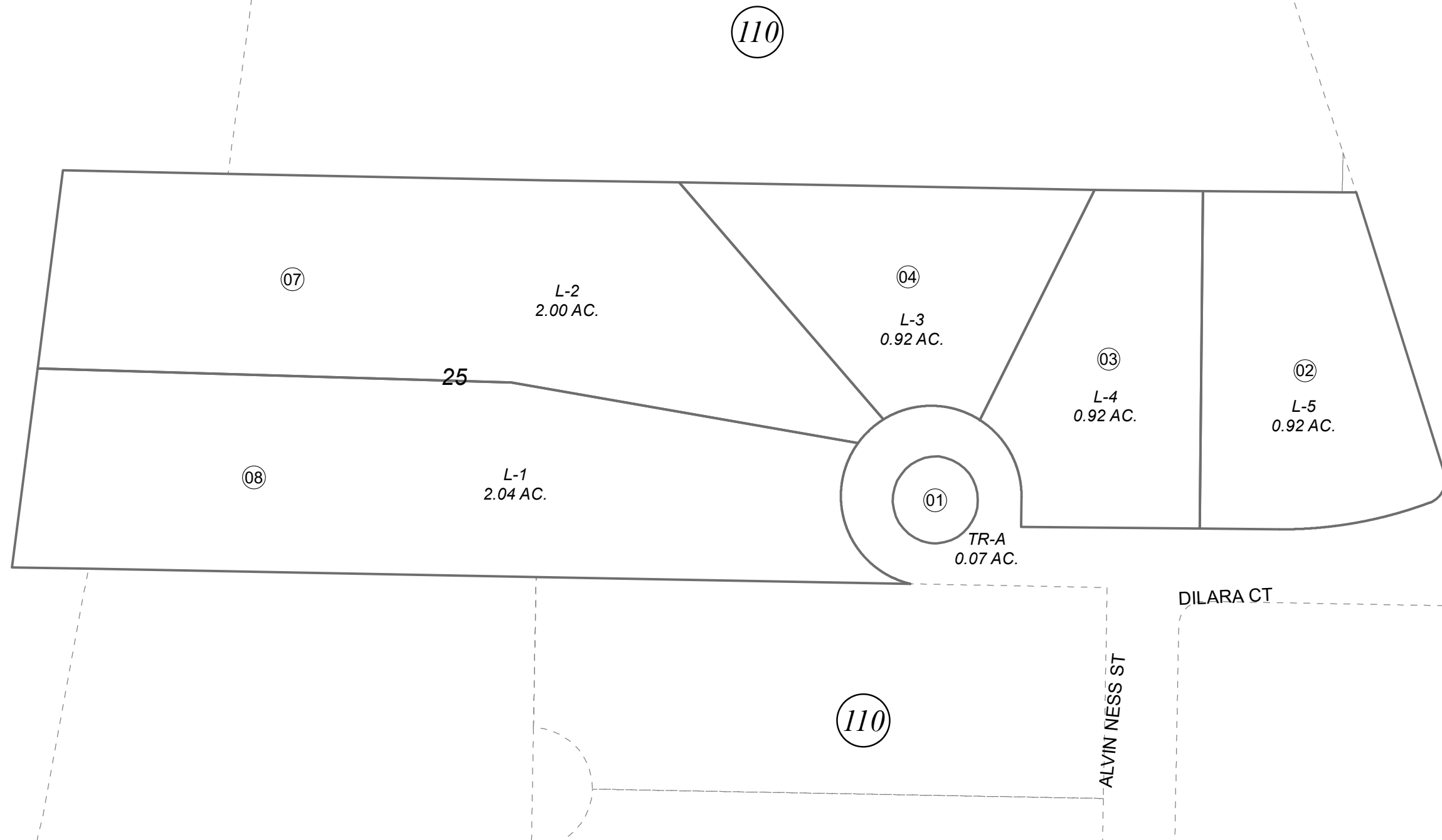


POR. NE1/4 SW1/4, SEC. 25, T04N, R12W, S.M.

131-580

Cook Inlet

KALIFORNIA BEACH RD



0 50 100 Feet

MAY 8, 2024

For 2025 assessment roll		
Delete	Add	Revise
To		01
(RE-ADDED TO TAX PAGE)		

Assessor's Map  
Kenai Peninsula Borough

HECKSAGON SUB KN0790043

This map is prepared for Kenai Peninsula Borough Assessing Dept. use only and is not intended for conveyance nor is it a survey.

Note- Assessor's block Numbers Shown in Ellipses  
Assessor's Parcel Numbers Shown in Circles