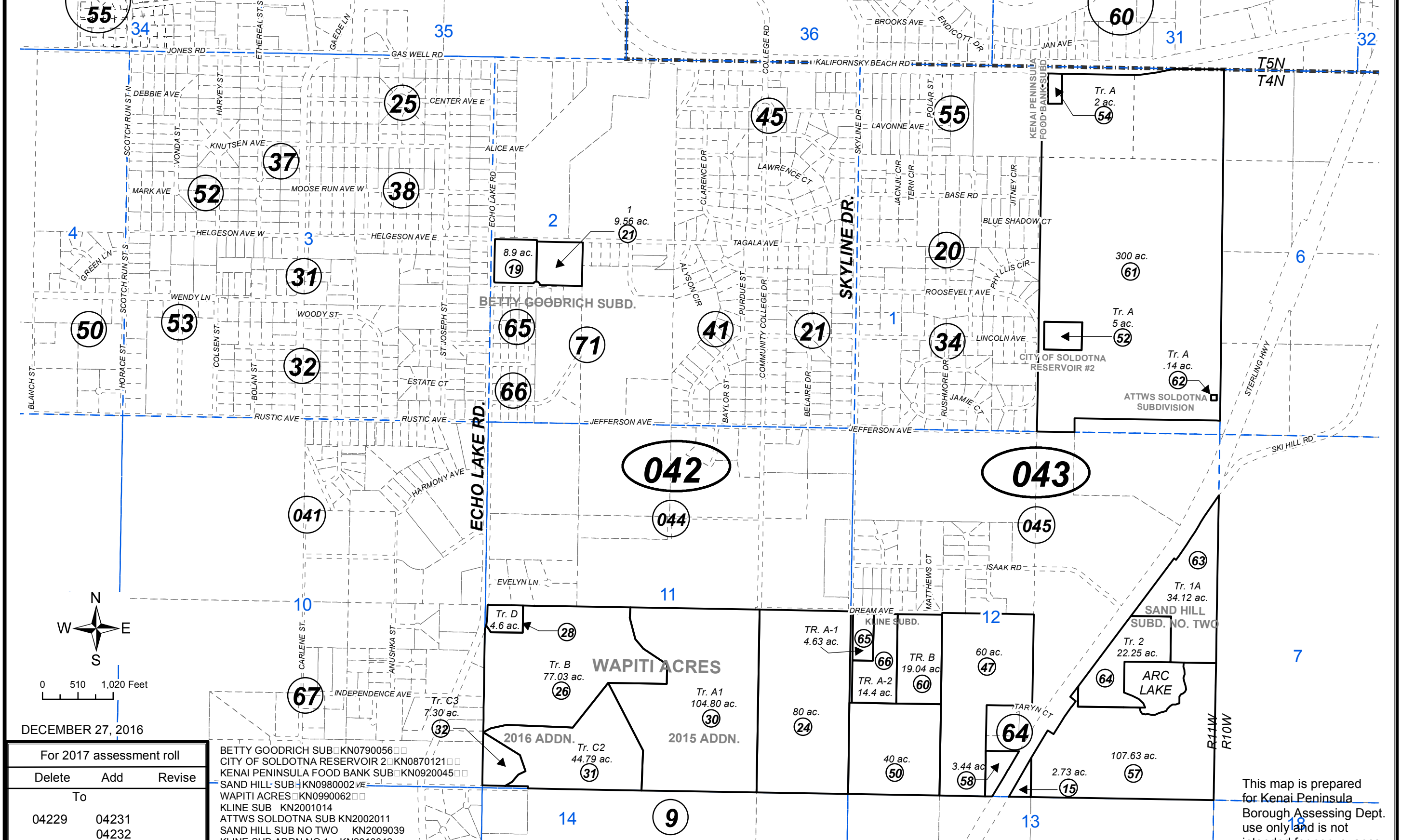


**BK 55**

SEC. 1-3 & 10-12, T04N, R11W, S.M.

**BK 60**

131-040



DECEMBER 27, 2016

For 2017 assessment roll		
Delete	Add	Revise
To		
04229	04231	
	04232	

- BETTY GOODRICH SUB KN0790056
- CITY OF SOLDOTNA RESERVOIR 2 KN0870121
- KENAI PENINSULA FOOD BANK SUB KN0920045
- SAND HILL SUB KN0980002
- WAPITI ACRES KN0990062
- KLINE SUB KN2001014
- ATTWS SOLDOTNA SUB KN2002011
- SAND HILL SUB NO TWO KN2009039
- KLINE SUB ADDN NO 1 KN2010042
- WAPITI ACRES 2015 ADDN KN2015076
- WAPITI ACRES 2016 ADDN KN2016081

Assessor's Map  
Kenai Peninsula Borough

Note- Assessor's block Numbers Shown in Elipses  
Assessor's Parcel Numbers Shown in Circles

This map is prepared for Kenai Peninsula Borough Assessing Dept. use only and is not intended for conveyance nor is it a survey.