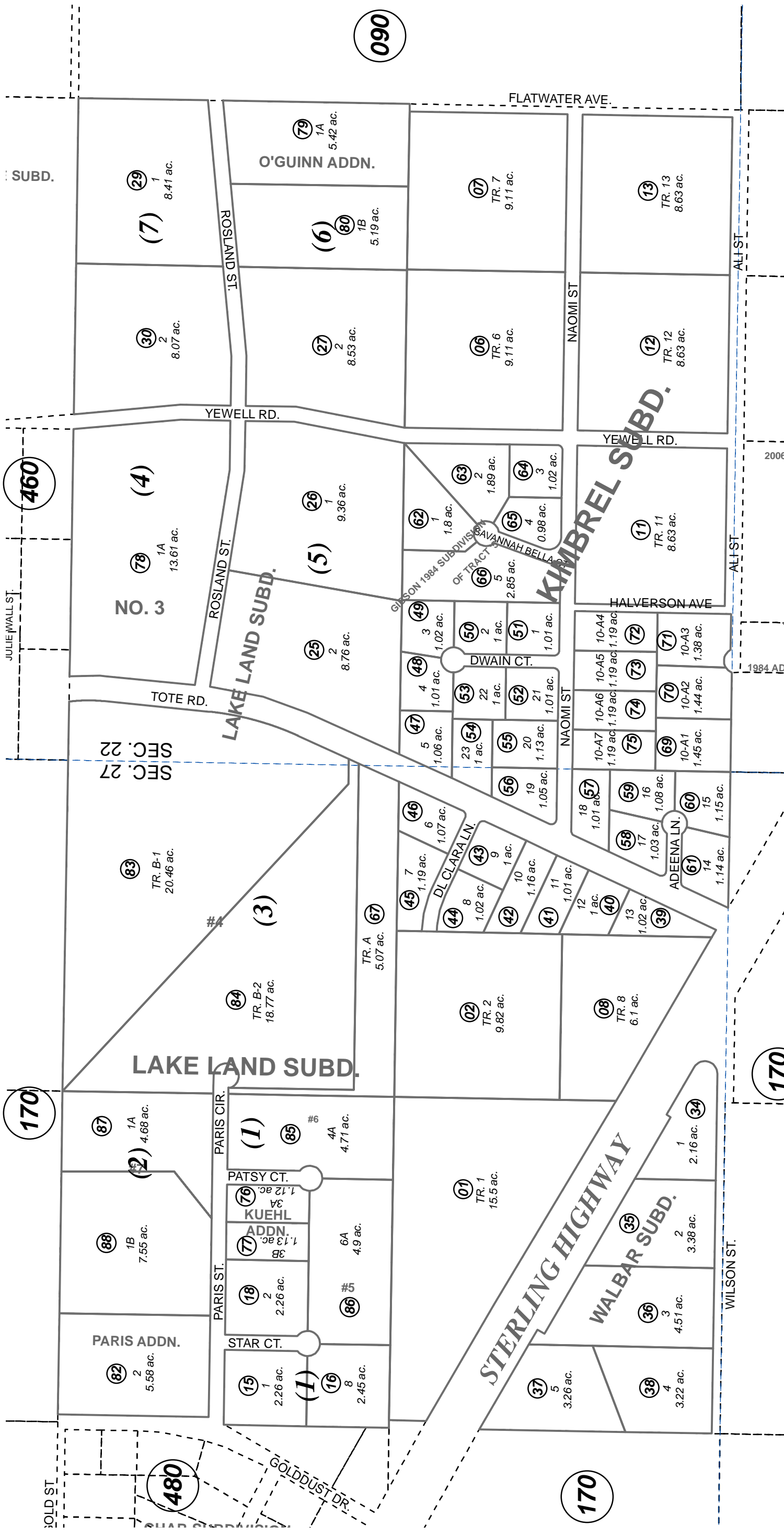


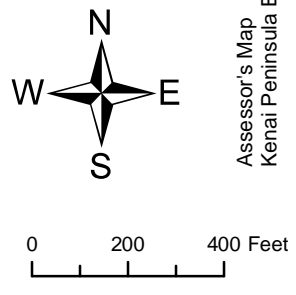
NE 1/4 SEC. 27 & SE 1/4 SEC. 22, T04N, R11W, S.M.

131-400



SEPTEMBER 19, 2014

For 2015 assessment roll	
Delete	Revise
81	87,88



- KIMBREL SUB KN0760068
- LAKE LAND SUB KN0790042
- WALBAR SUB KN0810127
- KIMBREL SUB GIBSON 1981 SUB OF TRACTS 3 KN0820063
- KIMBREL SUB GIBSON 1984 SUB KN0850040
- LAKE LAND SUB NO 2 KN0930062
- LAKE LAND SUB KUEHL ADDN KN0960052
- KIMBREL SUB WINN REPLAT KN0960056

- LAKE LAND SUB NO 3 KN2002115
- LAKE LAND SUB O'GUINN ADDN KN2005072
- LAKE LAND SUB PARIS ADDN KN2009093
- LAKE LAND SUB #4 KN2011069
- LAKE LAND SUB #6 KN2012036
- LAKE LAND SUB #5 KN2012069
- LAKE LAND SUB #7 KN2014053

This map is prepared for Kenai Peninsula Borough Assessing Dept. use only and is not intended for conveyance nor is it a survey.

Note- Assessor's block Numbers Shown in Ellipses Assessor's Parcel Numbers Shown in Circles

Assessor's Map Kenai Peninsula Borough