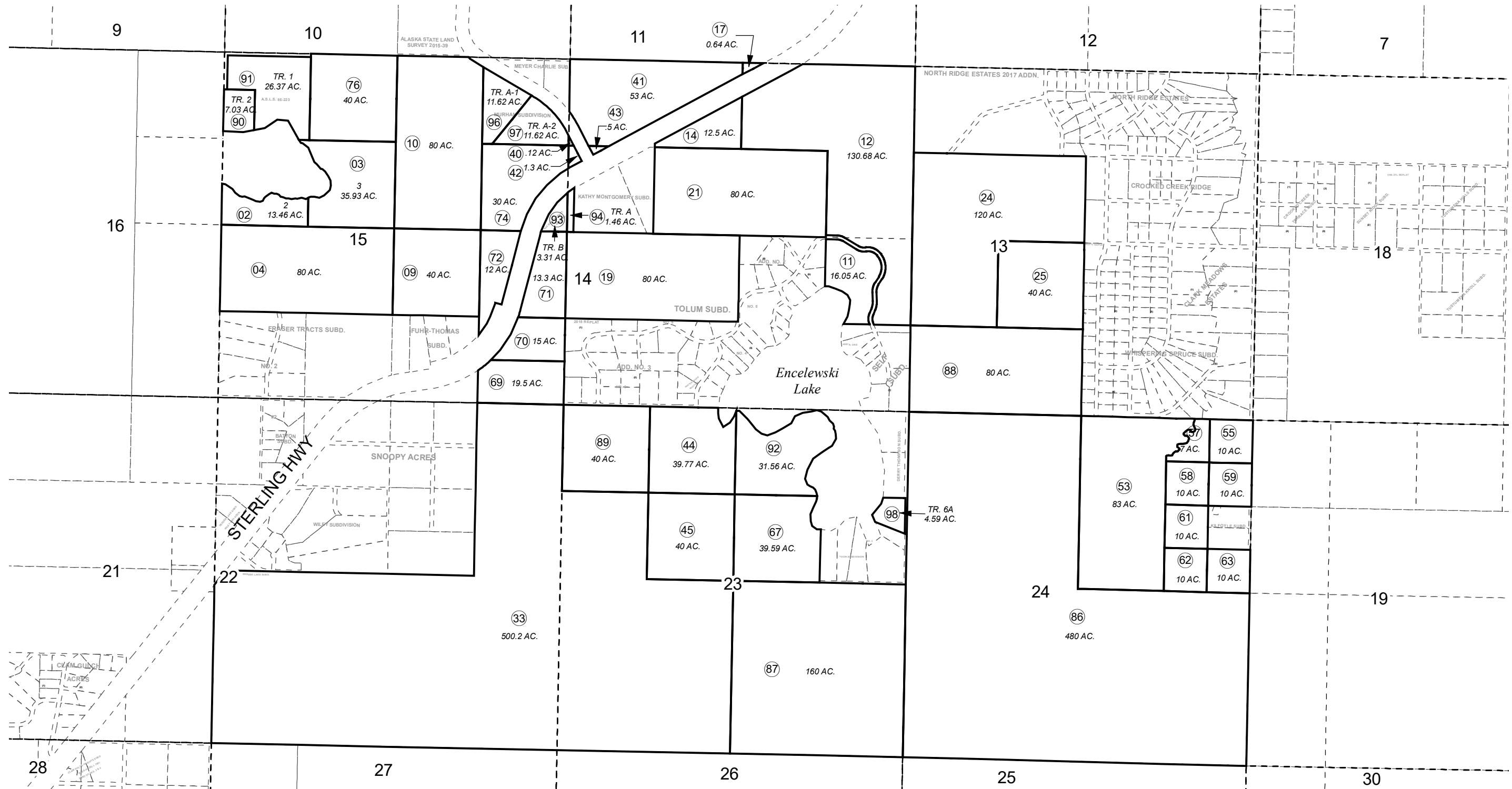


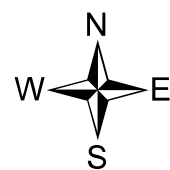
POR. SEC. 13-15 & 22-24, T02N, R12W, S.M.

137-050



DECEMBER 27, 2018

For 2019 assessment roll		
Delete	Add	Revise
To		
60	137060+	



0 500 1,000 2,000 Feet

Assessor's Map  
Kenai Peninsula Borough

ALASKA STATE LAND SURVEY 85-223 □ KN0870054  
 1982 MOBLEY TRACT AMENDED □ KN0910010  
 1982 MOBLEY TRACT SUB AMENDED □ KN0910010  
 MURHAN SUB □ KN0920070  
 LOON SUB □ KN0920074  
 ALASKA STATE LAND SURVEY 2004-36 □ KN2006073  
 ROW ACQUISITION PLAT - STOL RD KN2013015

This map is prepared for Kenai Peninsula Borough Assessing Dept. use only and is not intended for conveyance nor is it a survey.

Note- Assessor's block Numbers Shown in Ellipses  
 Assessor's Parcel Numbers Shown in Circles