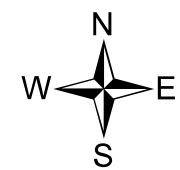
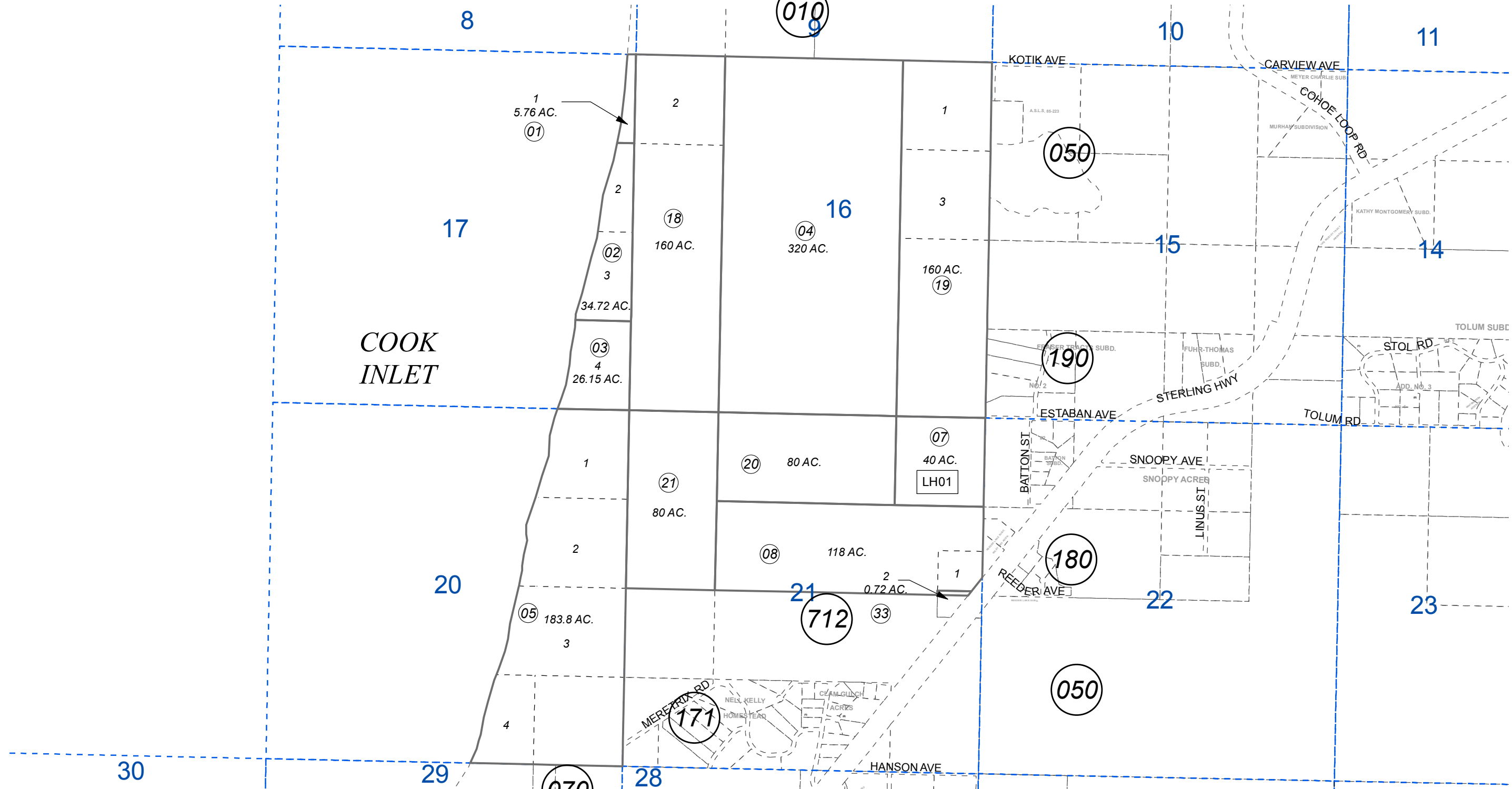


SEC. 16, 17, 20 & 21, T02N, R12W, S.M.

137-040

COOK  
INLET



0 1,000 2,000 Feet

APRIL 15, 2016

For 2017 assessment roll		
Delete	Add	Revise
To		07
(ADDED LEASE HOLD REFERENCE)		

Assessor's Map  
Kenai Peninsula Borough

This map is prepared for Kenai Peninsula Borough Assessing Dept. use only and is not intended for conveyance nor is it a survey.

Note- Assessor's block Numbers Shown in Ellipses  
Assessor's Parcel Numbers Shown in Circles