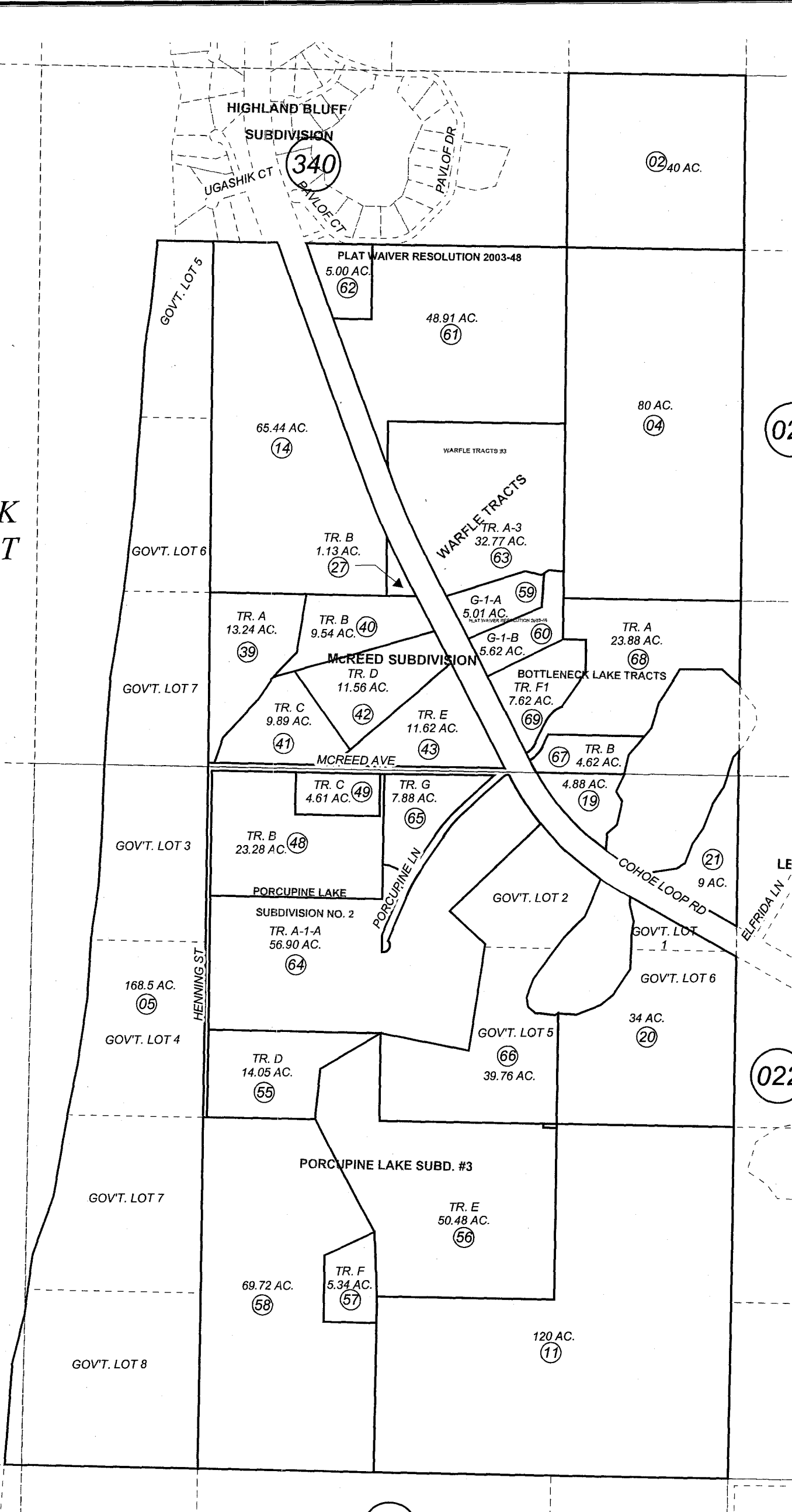


137-010

SEC. 4 & 9 T02N, R12W, S.M.

COOK
INLET



This map is prepared
for Kenai Peninsula
Borough Assessing Dept.
use only and is not
intended for conveyance
nor is it a survey.

Note- Assessor's block Numbers Shown in Ellipses
Assessor's Parcel Numbers Shown in Circles

- WARFLE TRACTS KN0810168
- MCREED SUB KN0930012
- PORCUPINE LAKE SUB NO 2 KN0930032
- WARFLE TRACTS NO 2 KN0940057
- PORCUPINE LAKE SUB # 3 KN2000066
- PLAT WAIVER RESOLUTION 2003-46 KN2003-014944-0
- PLAT WAIVER RESOLUTION 2003-48 2004-000546-0
- WARFLE TRACTS #3 KN2004094
- PORCUPINE LAKE SUB # 4 KN2005001
- BOTTLENECK LAKE TRACTS KN2006032

Assessor's Map
Kenai Peninsula Borough



SEPTEMBER 6, 2006

For 2007 assessment roll	
Delete	Revise
7,44	67-69
To	