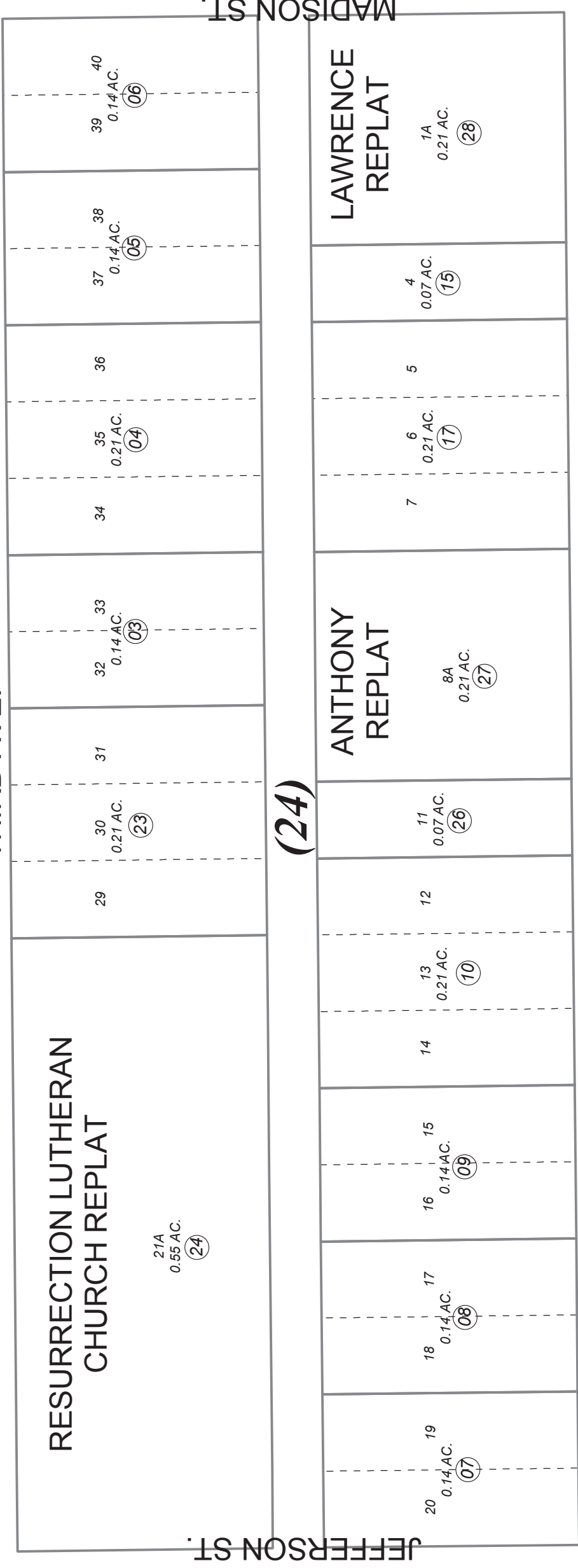


POR. SEC. 10, T01S, R01W, S.M.

148-100

070

THIRD AVE.



BK 149

(24)

110

RESURRECTION LUTHERAN CHURCH REPLAT

ANTHONY REPLAT

LAWRENCE REPLAT

JEFFERSON ST.

MADISON ST.

FOURTH AVE.

120

SEPTEMBER 3, 2015

For 2016 assessment roll		
Delete	Add	Revise
	16	28

0 20 40 Feet



ORIGINAL TOWNSITE OF SEWARD SW0000001
 ORIGINAL TOWNSITE OF SEWARD RESURRECTION LUTHERAN CHURCH REPLAT SW0970006
 ORIGINAL TOWNSITE OF SEWARD ANTHONY REPLAT SW2003015
 SEWARD ORIGINAL TOWNSITE LAWRENCE REPLAT SW2015013

Assessor's Map
 Kenai Peninsula Borough

Note- Assessor's block Numbers Shown in Ellipses
 Assessor's Parcel Numbers Shown in Circles

This map is prepared for Kenai Peninsula Borough Assessing Dept. use only and is not intended for conveyance nor is it a survey.