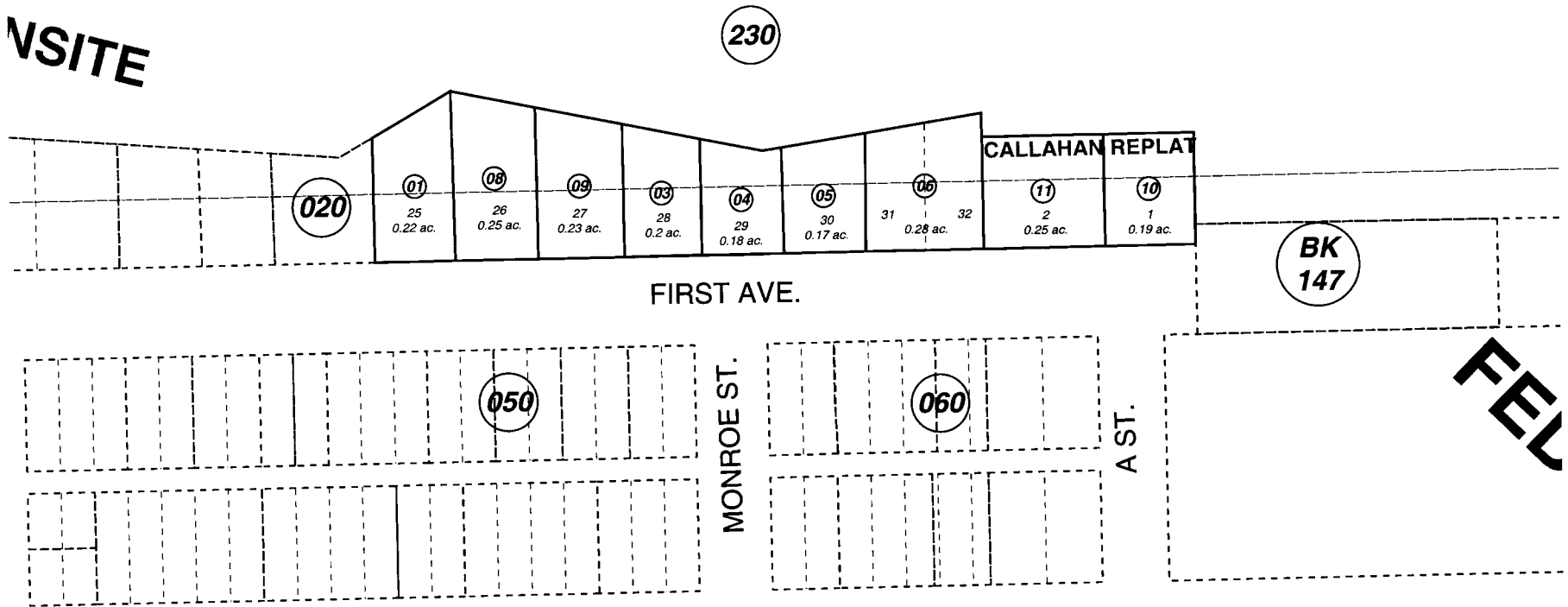
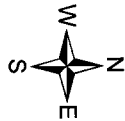


TION TO
NSITE



NOVEMBER 15, 2002

For 2003 assessment roll		
Delete	Add	Revise
	To	
7	10,11	



Assessor's Map
Kenai Peninsula Borough

SEWARD TOWNSITE MARATHON ADDN SW0000019
FEDERAL ADDITION CALLAHAN REPLAT SW2002012

Note- Assessor's block Numbers Shown in Elipses
Assessor's Parcel Numbers Shown in Circles

This map is prepared for Kenai Peninsula Borough Assessing Dept. use only and is not intended for conveyance nor is it a survey.