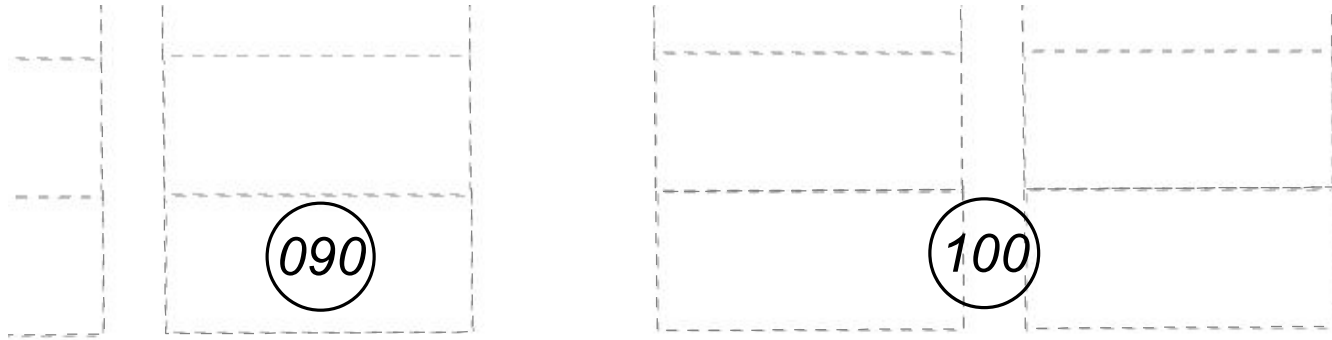
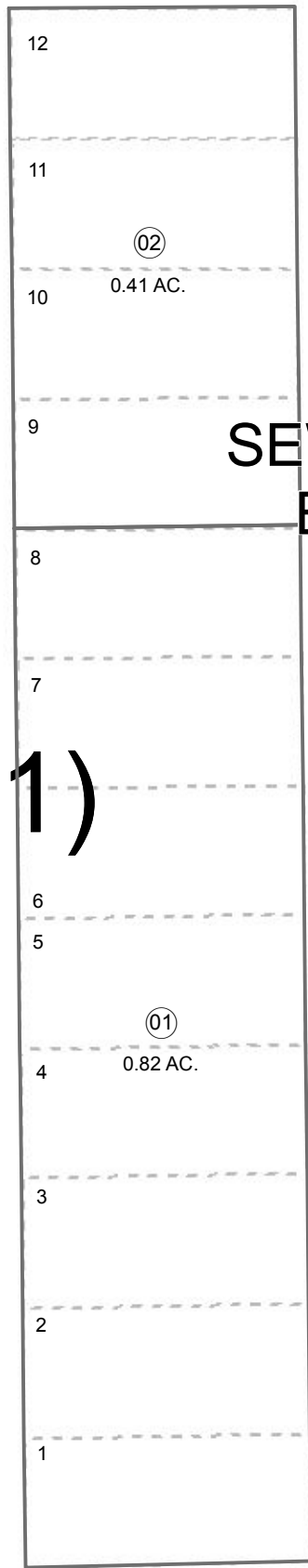


147-080

POR. SEC. 4, T01S, R01W, S.M.

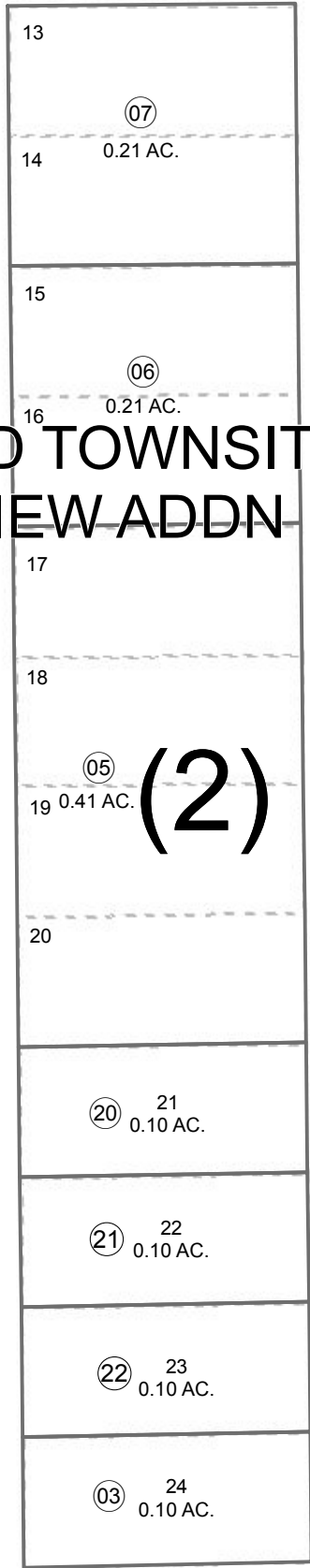


BARWELL ST

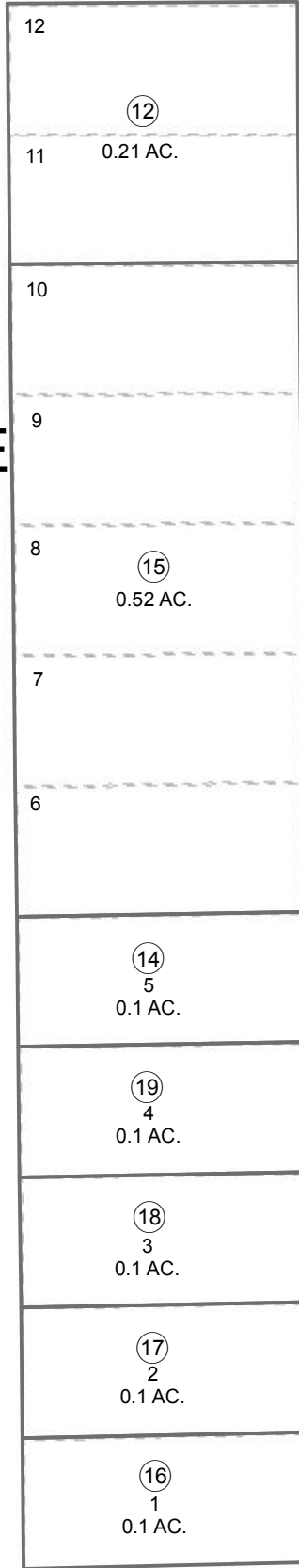


HAROLD AVE

SEWARD TOWNSITE
BAYVIEW ADDN

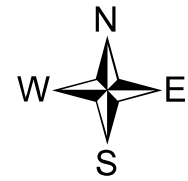


AIALIK ST



BAYVIEW PL

SEC. 4
SEC. 3



0 20 40 Feet

JUNE 7, 2017

For 2018 assessment roll	
Delete	Add
	Revise
To	
04	20-22

This map is prepared for Kenai Peninsula Borough Assessing Dept. use only and is not intended for conveyance nor is it a survey.

Note- Assessor's block Numbers Shown in Ellipses Assessor's Parcel Numbers Shown in Circles

Assessor's Map Kenai Peninsula Borough

SEWARD TOWNSITE BAYVIEW ADDN SW0000010