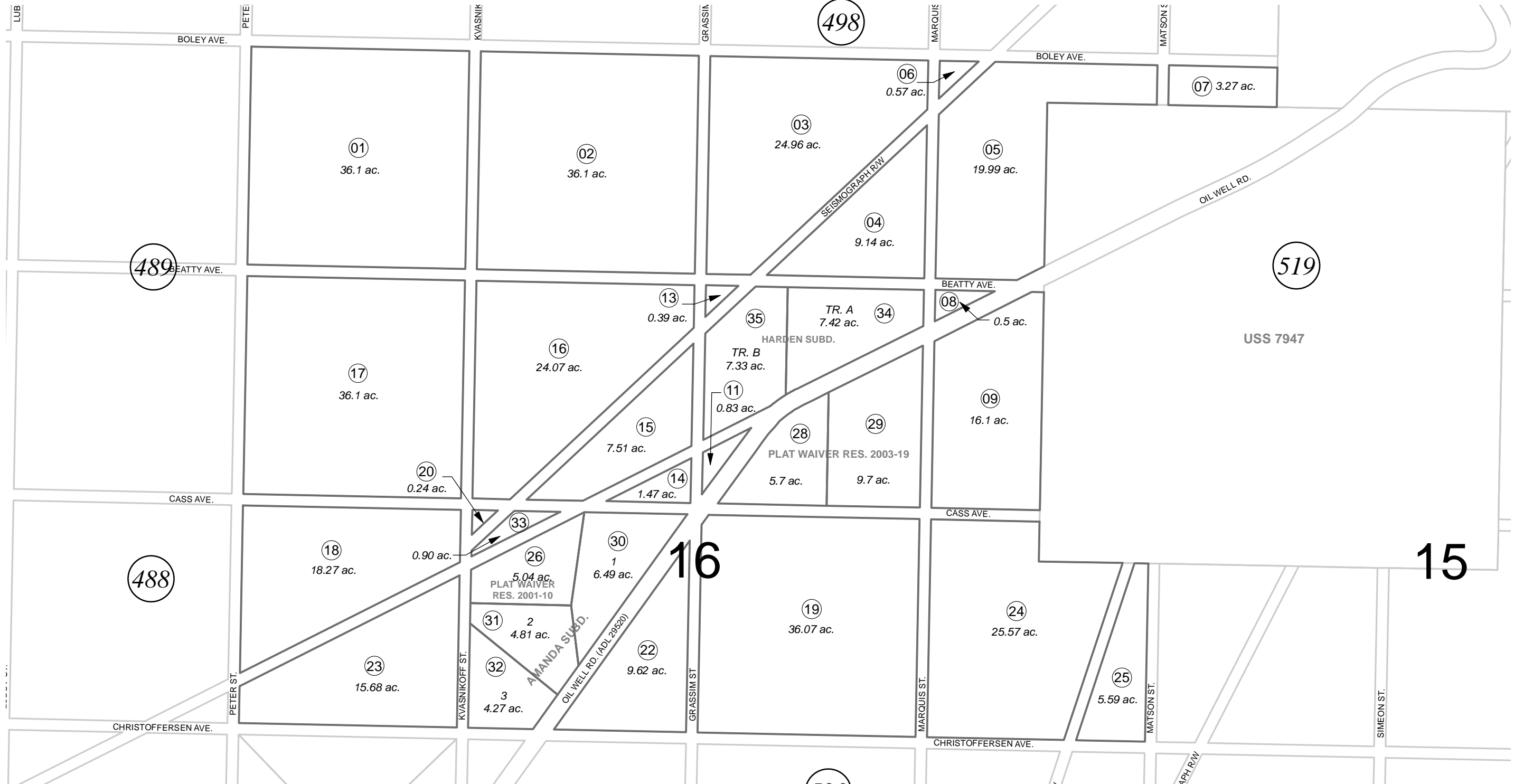


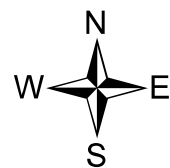
N3/4 SEC. 16 & POR. NW1/4 NW1/4 SEC. 15, T02S, R12W, S.M.

185-499



OCTOBER 3, 2014

For 2015 assessment roll		
Delete	Add	Revise
12	34,35	



0 150 300 600 Feet

Assessor's Map
Kenai Peninsula Borough

PLAT WAIVER RES 2001-10 HM2001-002223
 PLAT WAIVER RES 2003-19 HM2003-002572
 AMANDA SUB HM2007015
 HARDEN SUB HM2014022

This map is prepared for Kenai Peninsula Borough Assessing Dept. use only and is not intended for conveyance nor is it a survey.
 Note- Assessor's block Numbers Shown in Ellipses
 Assessor's Parcel Numbers Shown in Circles