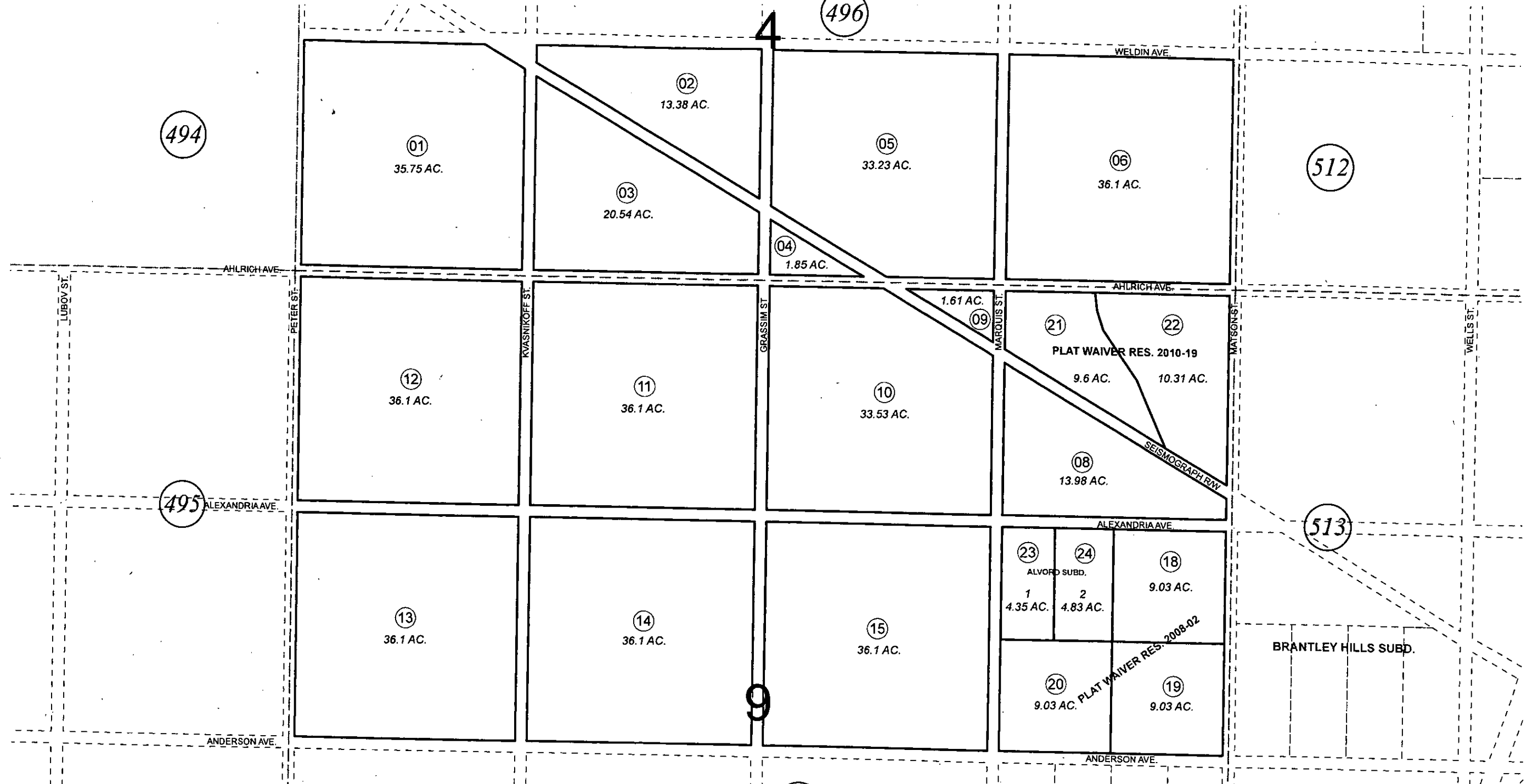


S 1/4 SEC. 4 & N 1/2 SEC. 9, T02S, R12W, S.M.

185-497



MAY 6, 2011

For 2012 assessment roll		
Delete	Add	Revise
17	23,24	



0 150 300 600 Feet

Assessor's Map
Kenai Peninsula Borough

PLAT WAIVER RES 2008-02 HM2008-00063-0
 PLAT WAIVER RES 2010-19 HM2010-003312-0
 RECORD OF SURVEY HM2010024
 ALVORD SUB HM2011010

This map is prepared for Kenai Peninsula Borough Assessing Dept. use only and is not intended for conveyance nor is it a survey.
 Note- Assessor's block Numbers Shown in Elipses
 Assessor's Parcel Numbers Shown in Circles