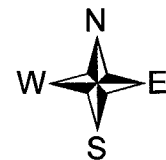
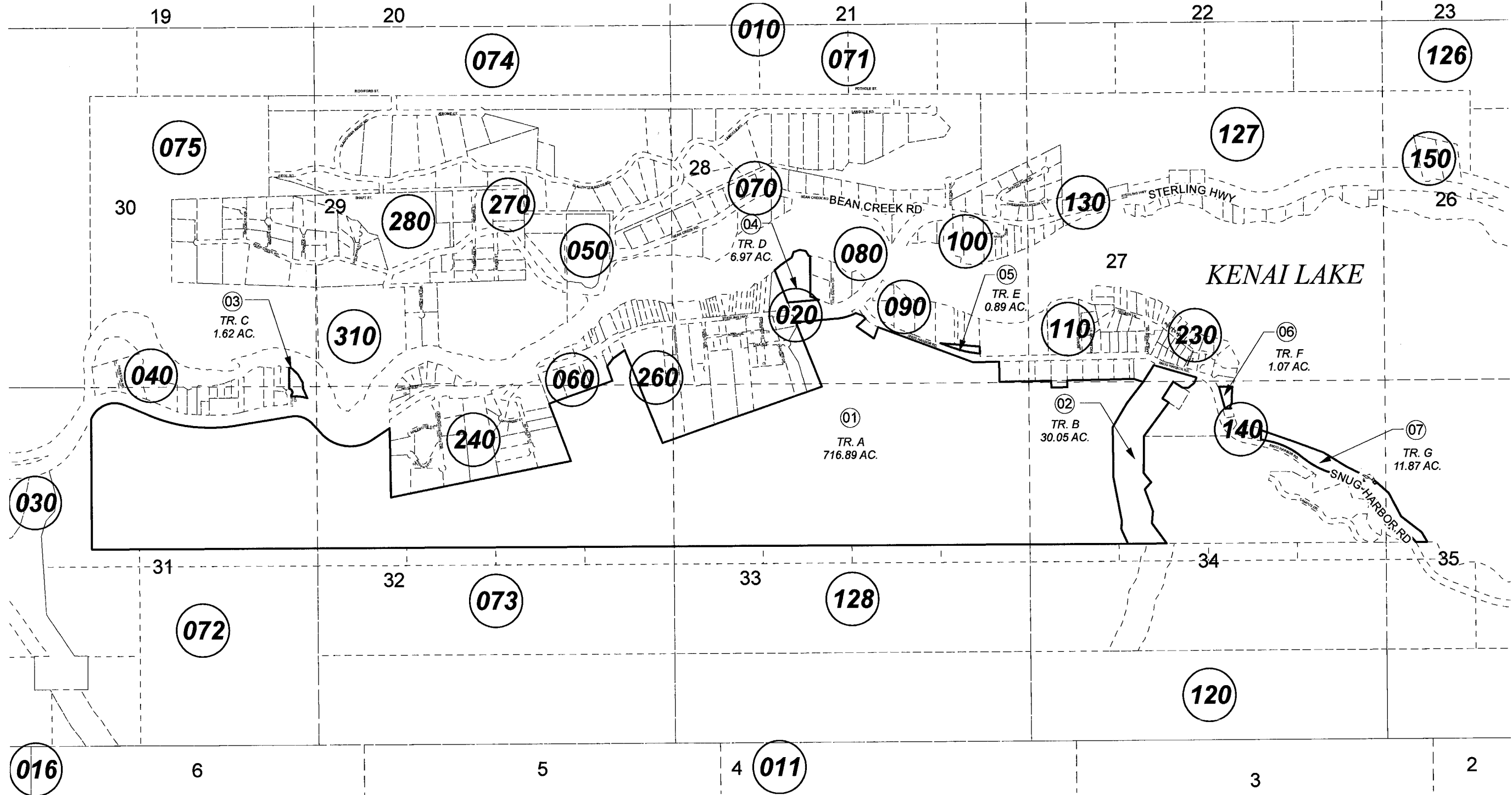


POR. SEC. 27-35, T05N, R03W, S.M.

119-119



JANUARY 25, 2008

For 2008 assessment roll

Delete	Add	Revise
--------	-----	--------

To

NEW PAGE

Assessor's Map
Kenai Peninsula Borough

ALASKA STATE LAND SURVEY 2003-5 SW2006021

This map is prepared for Kenai Peninsula Borough Assessing Dept. use only and is not intended for conveyance nor is it a survey.

Note- Assessor's block Numbers Shown in Ellipses
Assessor's Parcel Numbers Shown in Circles