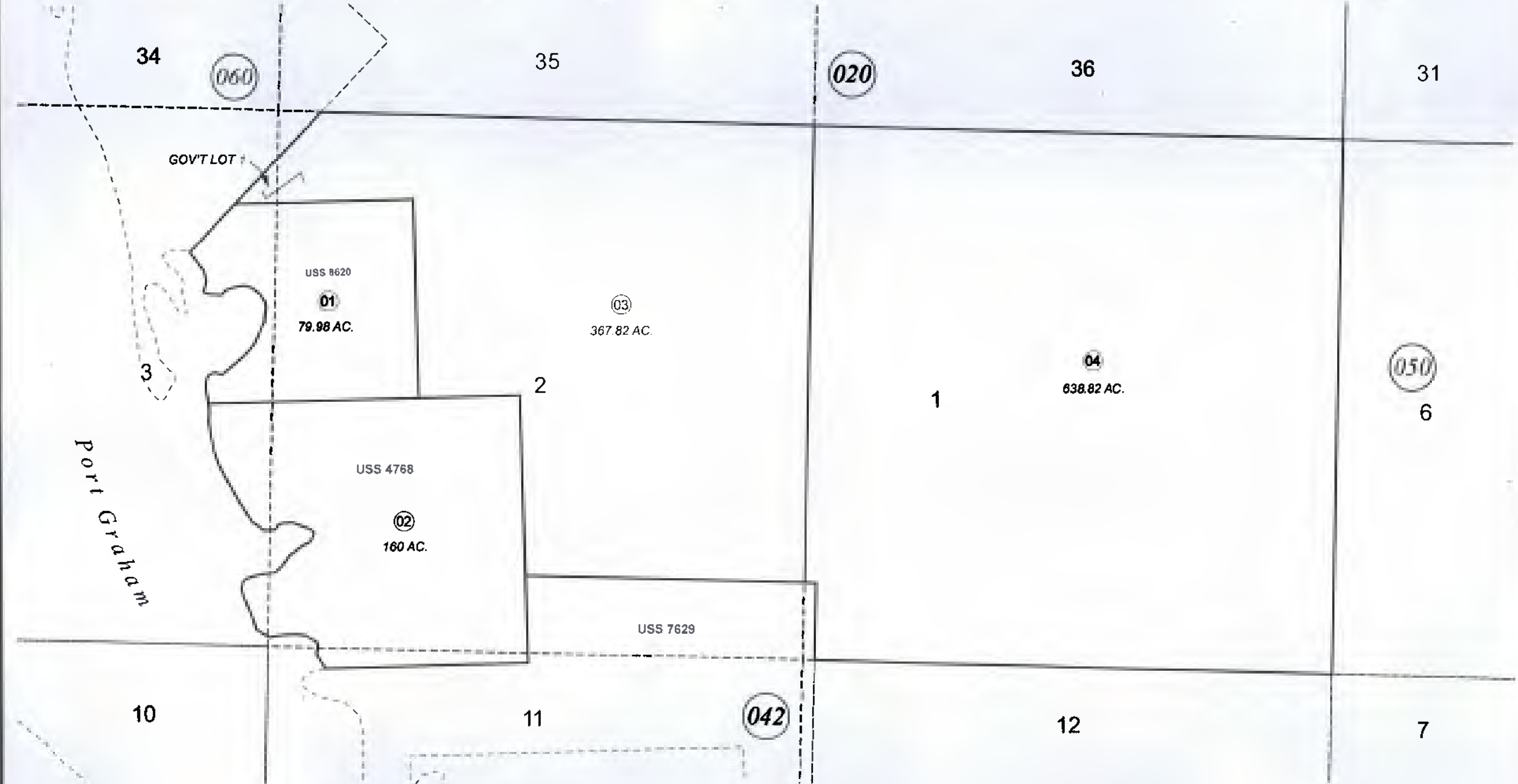


SEC. 1 & 2, AND POR. SEC. 3 & 11, T10S, R15W, S.M.

191-043



SEPTEMBER 26, 2012

For 2013 assessment roll		
Deleta	Add	Revise
	To	03,04
(ACREAGE CHANGE)		

Assessor's Map
Kenai Peninsula Borough

US SURVEY 4768 SL0004768
US SURVEY 8620 SL0008820

This map is prepared for Kenai Peninsula Borough Assessing Dept. use only and is not intended for conveyance nor is it a survey.
Note- Assessor's block Numbers Shown in Ellipses
Assessor's Parcel Numbers Shown in Circles