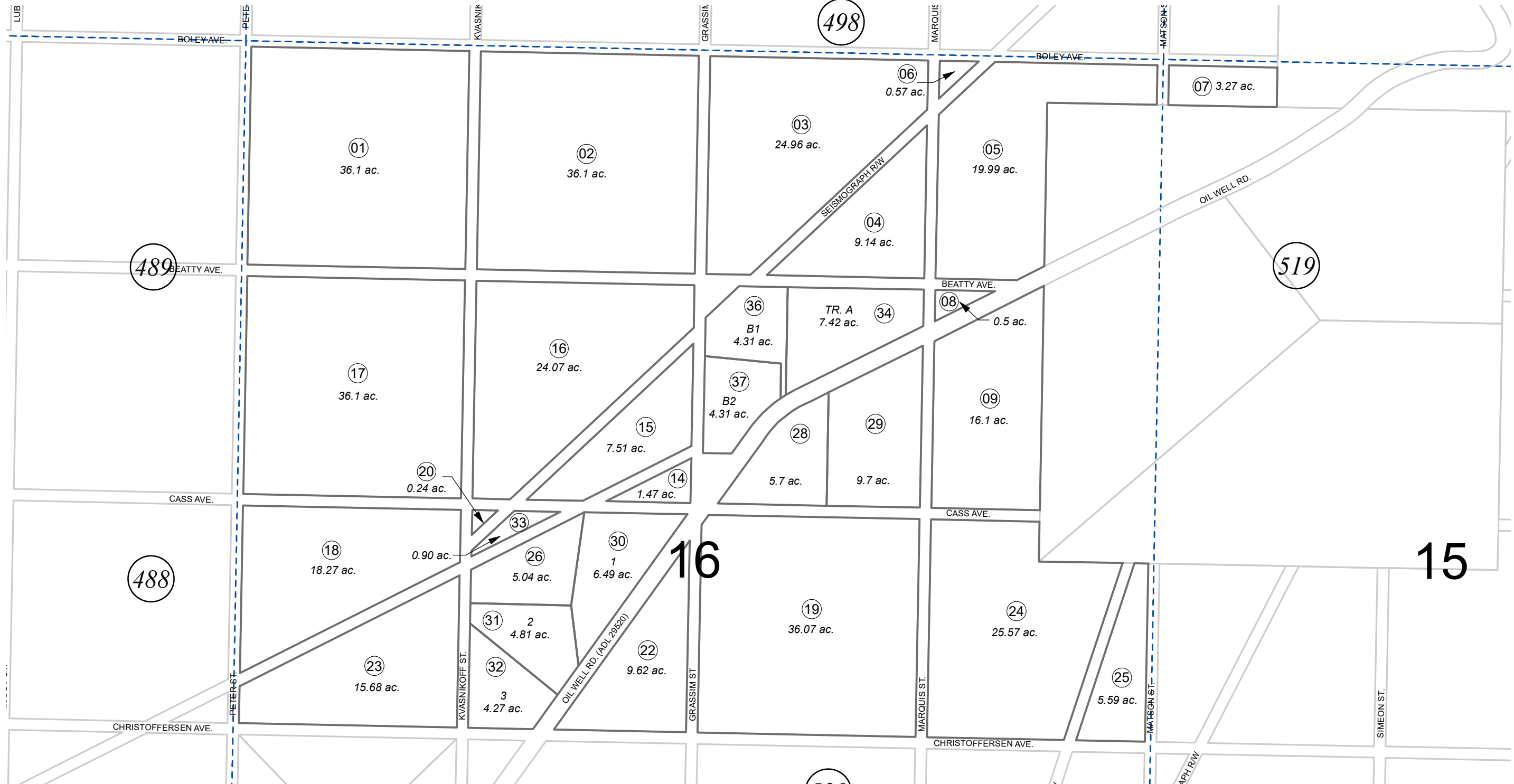


N3/4 SEC. 16 & POR. NW1/4 NW1/4 SEC. 15, T02S, R12W, S.M.

185-499



NOVEMBER 24, 2023

For 2024 assessment roll		
Delete	Add	Revise
11,13, 35	36,37	



0 150 300 600 Feet

Assessor's Map
Kenai Peninsula Borough

PLAT WAIVER RES 2001-10 HM2001-002223
 PLAT WAIVER RES 2003-19 HM2003-002572
 AMANDA SUB HM2007015
 HARDEN SUB HM2014022
 HARDEN SUB MUGS AND TAD ADDN HM2023043

This map is prepared for Kenai Peninsula Borough Assessing Dept. use only and is not intended for conveyance nor is it a survey.

Note- Assessor's block Numbers Shown in Ellipses
 Assessor's Parcel Numbers Shown in Circles