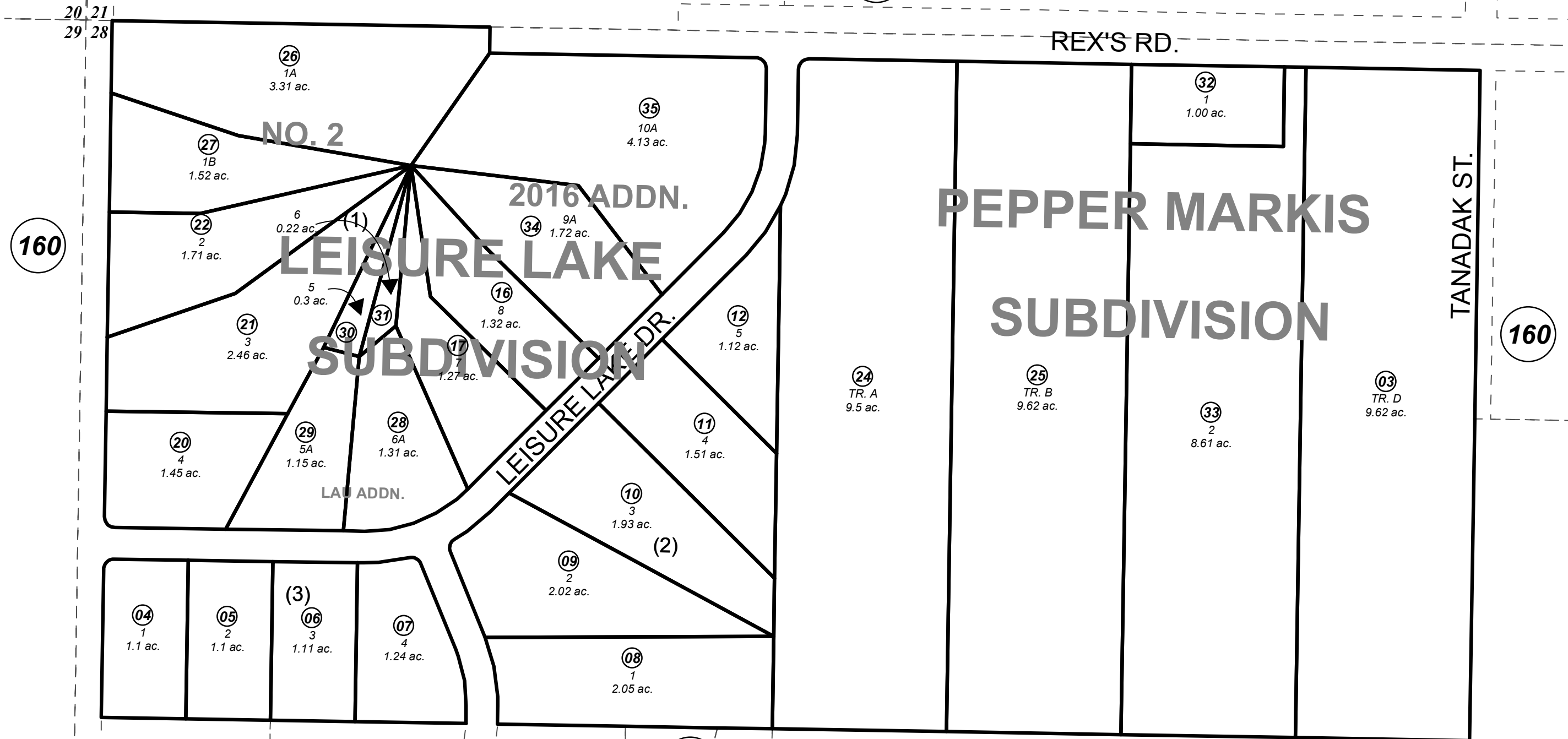


080

160

160

591



NO. 2

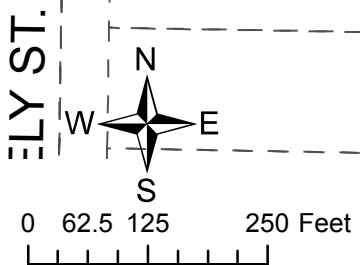
2016 ADDN.

LEISURE LAKE SUBDIVISION

PEPPER MARKIS SUBDIVISION

DECEMBER 12, 2016

For 2017 assessment roll		
Delete	Add	Revise
	To	
13-15	34,35	



Assessor's Map
Kenai Peninsula Borough

LEISURE LAKE SUB KN0790078
 PEPPER-MARKIS SUB KN0810113
 LEISURE LAKE SUB NO 2 KN0830095
 LEISURE LAKE SUB LAU ADDN KN0840176
 PEPPER-MARKIS SUB TRACT C REPLAT KN2001065
 LEISURE LAKE SUB 2016 ADDN KN2016069

This map is prepared for Kenai Peninsula Borough Assessing Dept. use only and is not intended for conveyance nor is it a survey.
 Note- Assessor's block Numbers Shown in Ellipses
 Assessor's Parcel Numbers Shown in Circles