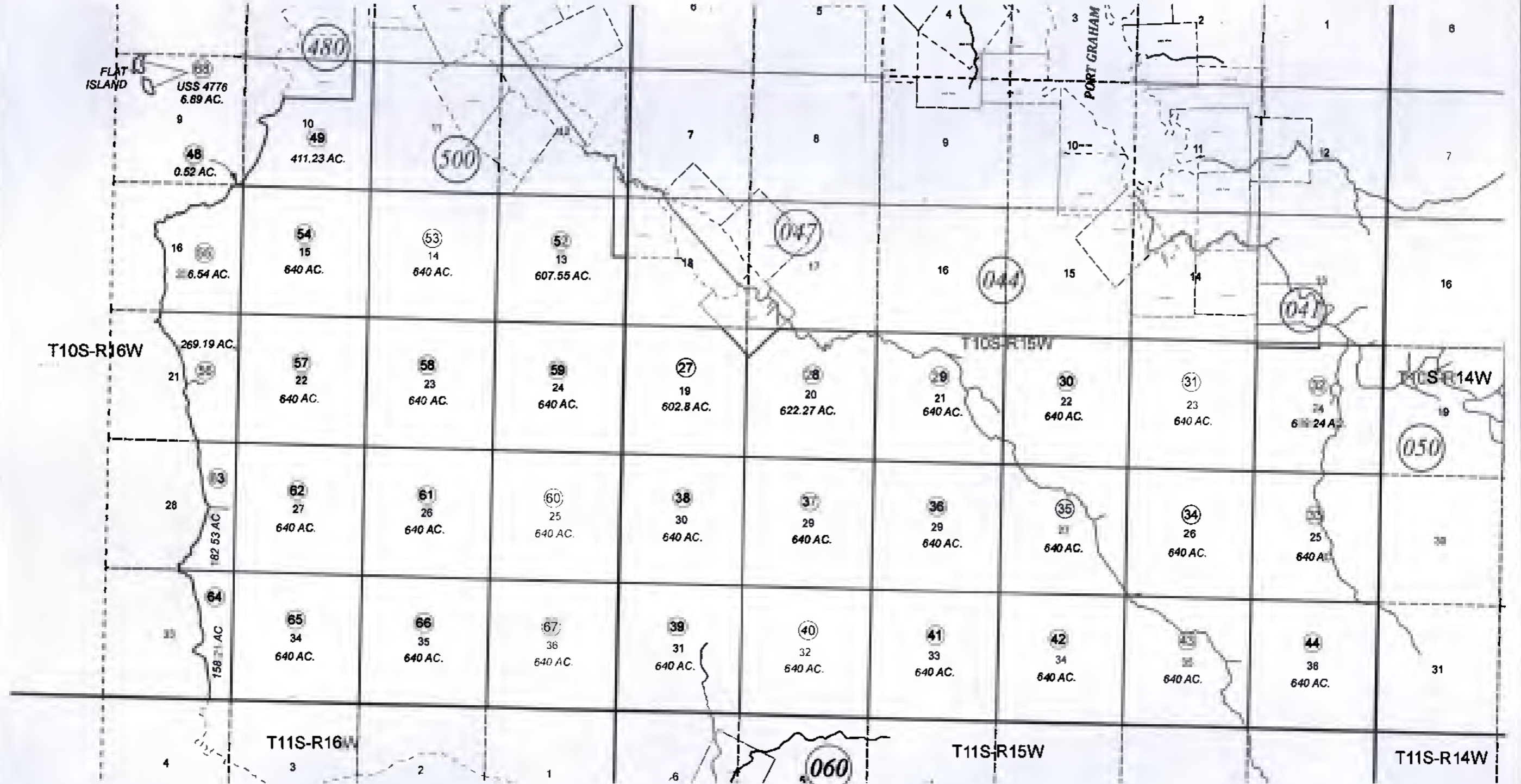


T01S, R15W, R16W, S.M.

191-040



SEPTEMBER 25, 2012

| For 2013 assessment roll | | |
|--------------------------|-----|-----------------|
| Delete | Add | Revise |
| | To | 27,28, 32,52 |
| (ACREAGE CHANGE) | | |



Assessor's Map
Kenai Peninsula Borough

US SURVEY 4778 FLAT ISLAND SL0004778

This map is prepared for Kenai Peninsula Borough Assessing Dept. use only and is not intended for conveyance nor is it a survey.

Note- Assessor's block Numbers Shown in Ellipses
Assessor's Parcel Numbers Shown in Circles