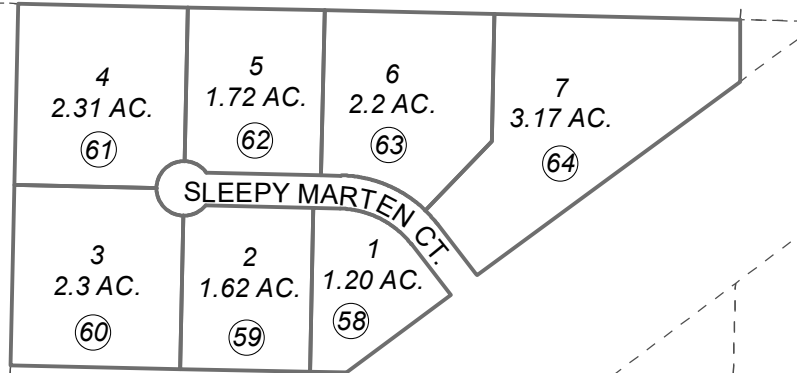


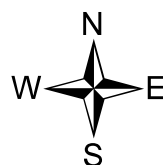
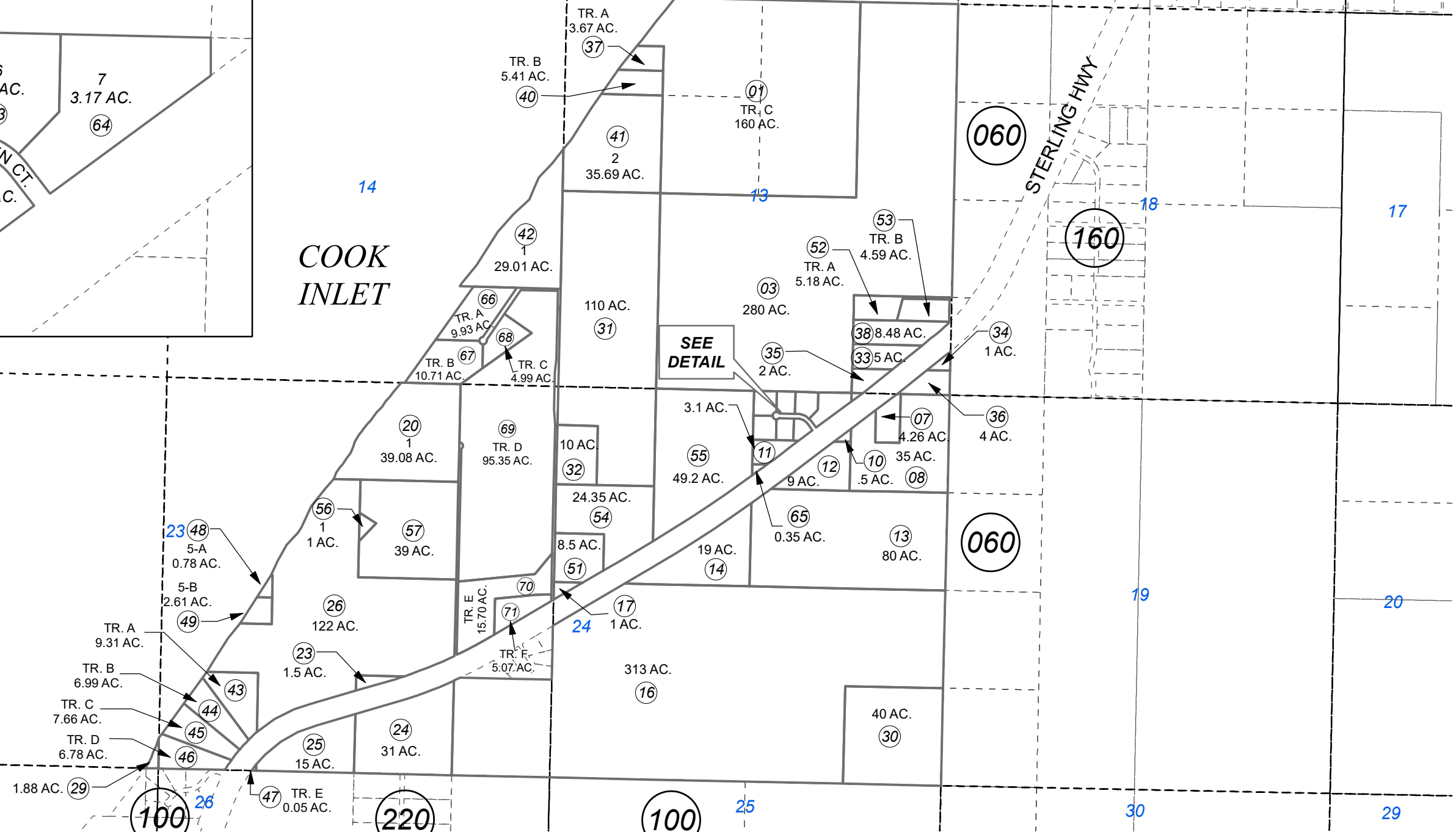
SMART SUBDIVISION



*COOK
INLET*

STERLING HWY

**SEE
DETAIL**



0 500 1,000 Feet

JUNE 9, 2021

For 2022 assessment roll		
Delete	Add	Revise
To		
18	66-71	

Assessor's Map
Kenai Peninsula Borough

ALASKA STATE LAND SURVEY 58-38 HM0000000
 KENAI PENINSULA BOROUGH SUB HM0830062
 WOODHEAD SUB HM0830110
 HOWARD SUB HM0940032
 GO GAS PAD SUB HM2007017
 SMART SUB HM2007047
 BLOSSOM SUB #2 HM2021011

Note- Assessor's block Numbers Shown in Ellipses
 Assessor's Parcel Numbers Shown in Circles

This map is prepared
 for Kenai Peninsula
 Borough Assessing Dept.
 use only and is not
 intended for conveyance
 nor is it a survey.