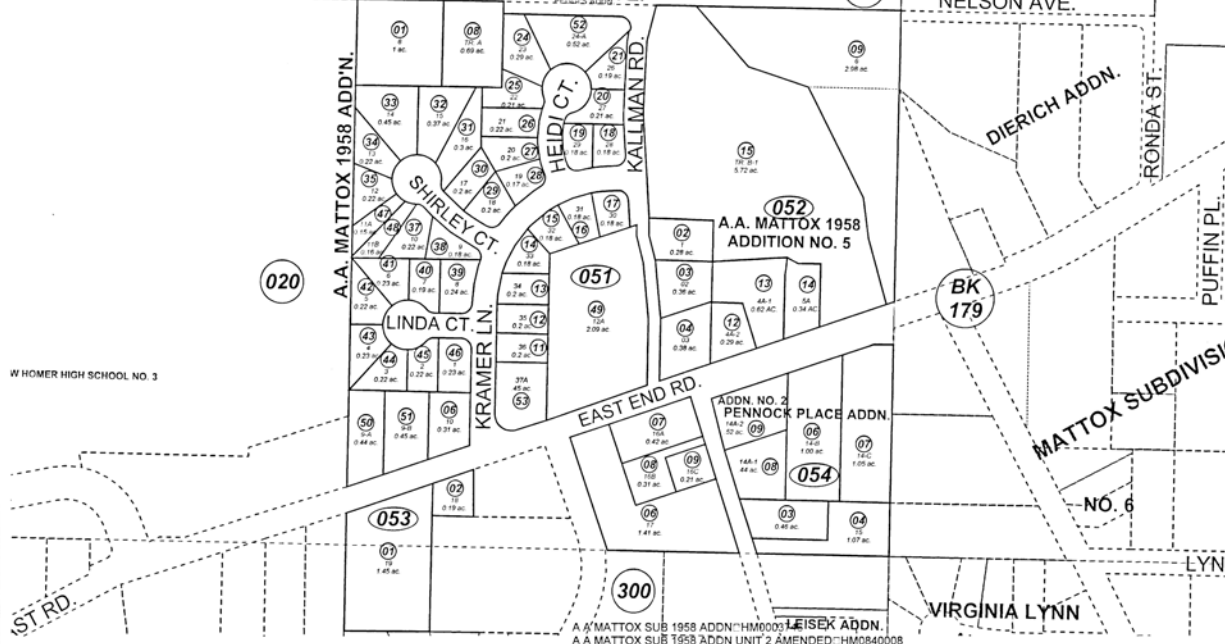


SE1/4 SE1/4 SEC. 17 & NE1/4 NE1/4 SEC. 20, T06S, R13W, S.M.

020 177-050
NELSON AVE.



W HOMER HIGH SCHOOL NO. 3



1 inch equals 200 feet

AUGUST 5, 2004

For 2005 assessment roll		
Delete	Add	Revise
	To	
05201	05212	
05206	THRU	
05210	05215	
05211		

Assessor's Map
Kenai Peninsula Borough

- A A MATTOX SUB 1958 ADDN NO 1 HM0003 LEISEX ADDN
- A A MATTOX SUB 1958 ADDN UNIT 2 AMENDED HM0840008
- A A MATTOX SUB 1958 ADDN UNIT 2 REPLAT HM0850125
- A A MATTOX SUB 1958 ADDN NO 3 HM0900021
- AA MATTOX NO 8 HM0950050
- A A MATTOX 1958 ADDN NO 4 HM0990003
- AA MATTOX PEGGIS ADDN HM0990064
- A A MATTOX SUB HOMER PROFESSIONAL BUILDING ADDN HM2002069
- A A MATTOX SUB 2000 ADDN HM2000055
- A A MATTOX SUB PENNOCK PLACE ADDN HM2002062
- A A MATTOX SUB PENNOCK PLACE ADDN NO 2 HM2003070
- A A MATTOX SUB 1958 ADDN NO 5 HM2004024

This map is prepared for Kenai Peninsula Borough Assessing Dept use only and is not intended for conveyance nor is it a survey.
Note: Assessor's block Numbers Shown in Ellipses
Assessor's Parcel Numbers Shown in Circles