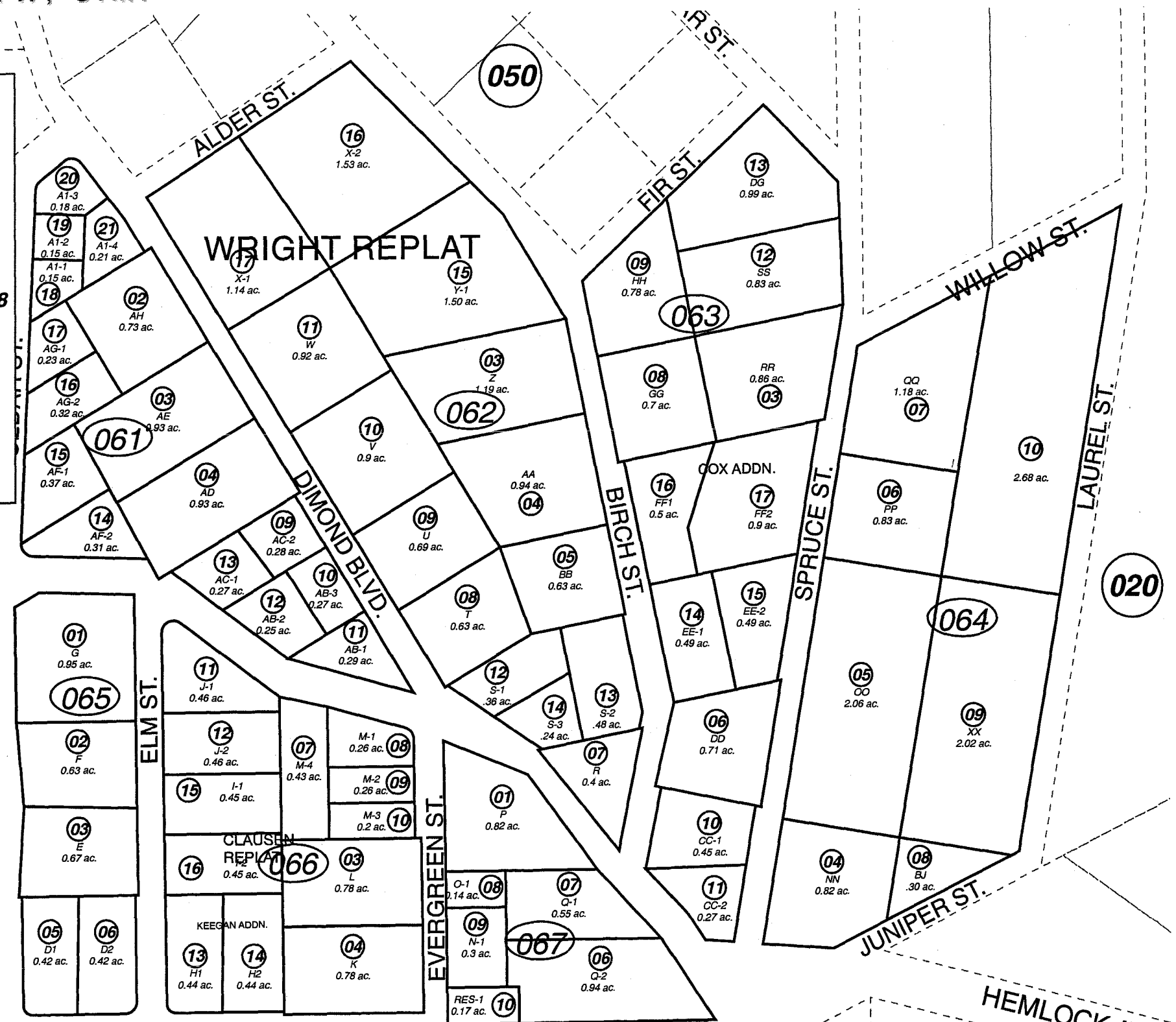


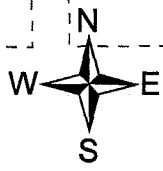
POR. SEC. 34, T01N, R01W, S.M.

145-061/067

FOREST ACRES SUB SW000017
FOREST ACRES RESUB AB SW0760006
FOREST ACRES RESUB LOT AC SW0760006
FOREST ACRES RESUB LOT AF SW0760006
FOREST ACRES RESUB LOT AG SW0760006
FOREST ACRES RESUB LOT CC SW0760006
FOREST ACRES SUB RESUB OF LOT AB SW0760006
FOREST ACRES RESUB LOT D SW0770011
FOREST ACRES RESUB LOT A1 SW0770013
FOREST ACRES RESUB LOTS N O Q & RESERVE SW0780008
FOREST ACRES RESUB LOT M SW0790003
VELMA SUB SW0790007
FOREST ACRES SUB WILLIAMS ADDN SW0840014
FOREST ACRES SUB KEEGAN ADDN SW0940027
FOREST ACRES SUB COX ADDN SW0960022
FOREST ACRES SUB ORR REPLAT SW2001017
FOREST ACRES SUB CLAUSEN REPLAT SW2002002
FOREST ACRES SUB WRIGHT REPLAT SW2002017



ASH ST.



1 inch equals 200 feet

AUGUST 15, 2005

For 2006 assessment roll		
Delete	Add	Revise
	To	
06401	06408	
	THRU	
	06410	

Assessor's Map
Kenai Peninsula Borough

This map is prepared for Kenai Peninsula Borough Assessing Dept. use only and is not intended for conveyance nor is it a survey.

Note- Assessor's block Numbers Shown in Ellipses
Assessor's Parcel Numbers Shown in Circles