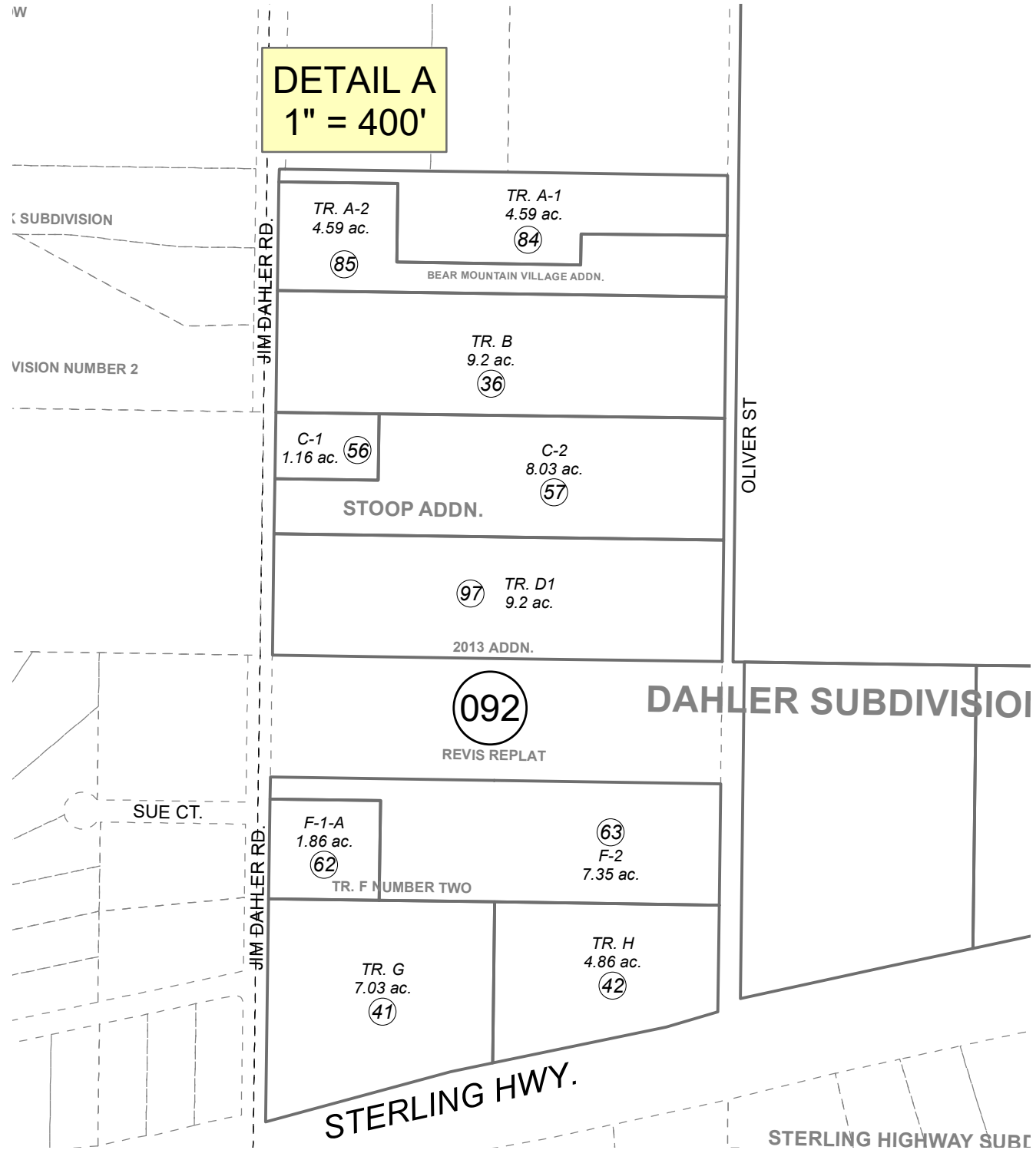


DETAIL A
1" = 400'



FEBRUARY 4, 2022

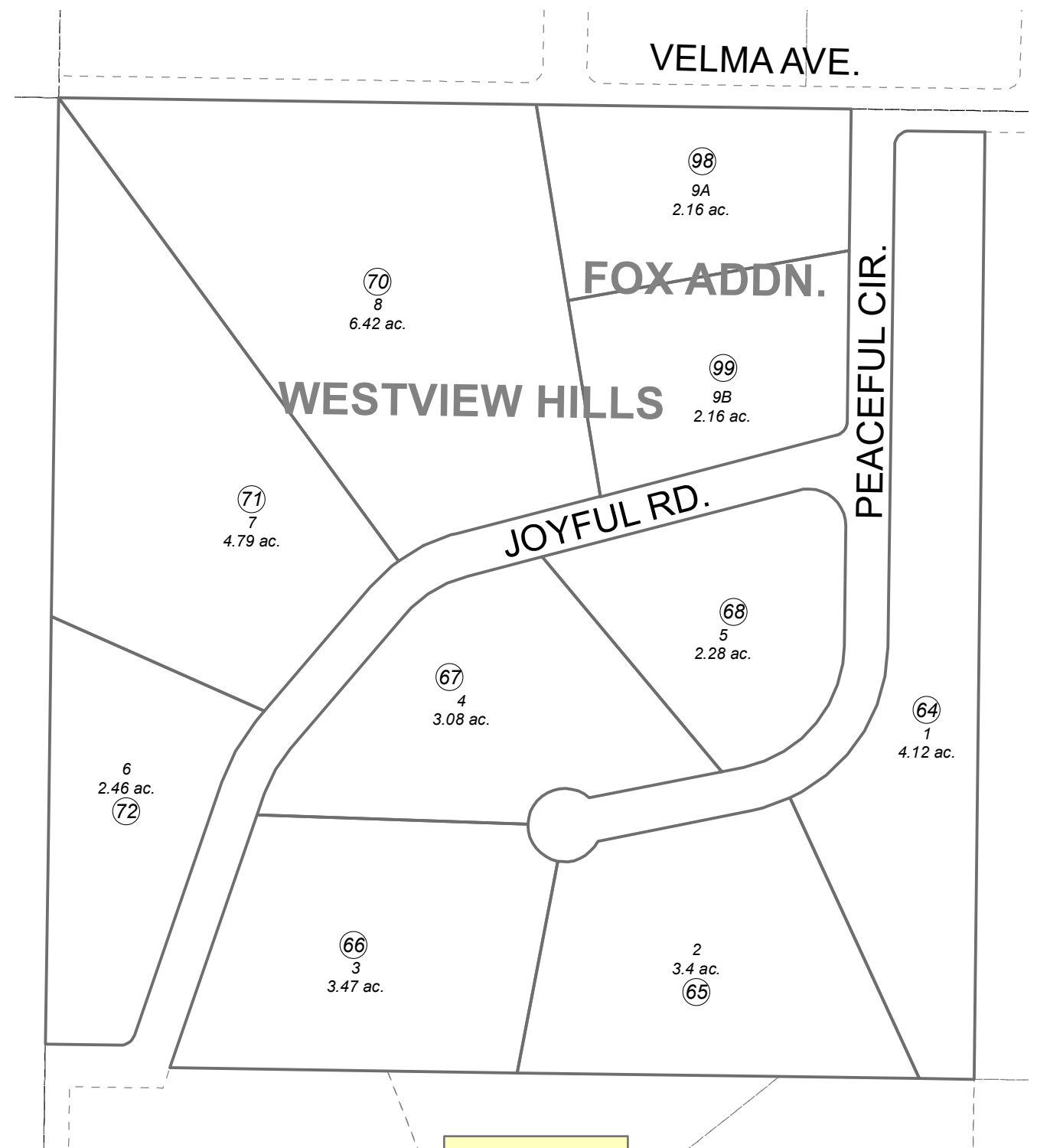
For 2022 assessment roll		
Delete	Add	Revise
To		
09193-09196	063-092+	



0 100 200 400 Feet

Assessor's Map
Kenai Peninsula Borough

DETAIL B
1" = 200'



This map is prepared for Kenai Peninsula Borough Assessing Dept. use only and is not intended for conveyance nor is it a survey.

Note- Assessor's block Numbers Shown in Ellipses
Assessor's Parcel Numbers Shown in Circles