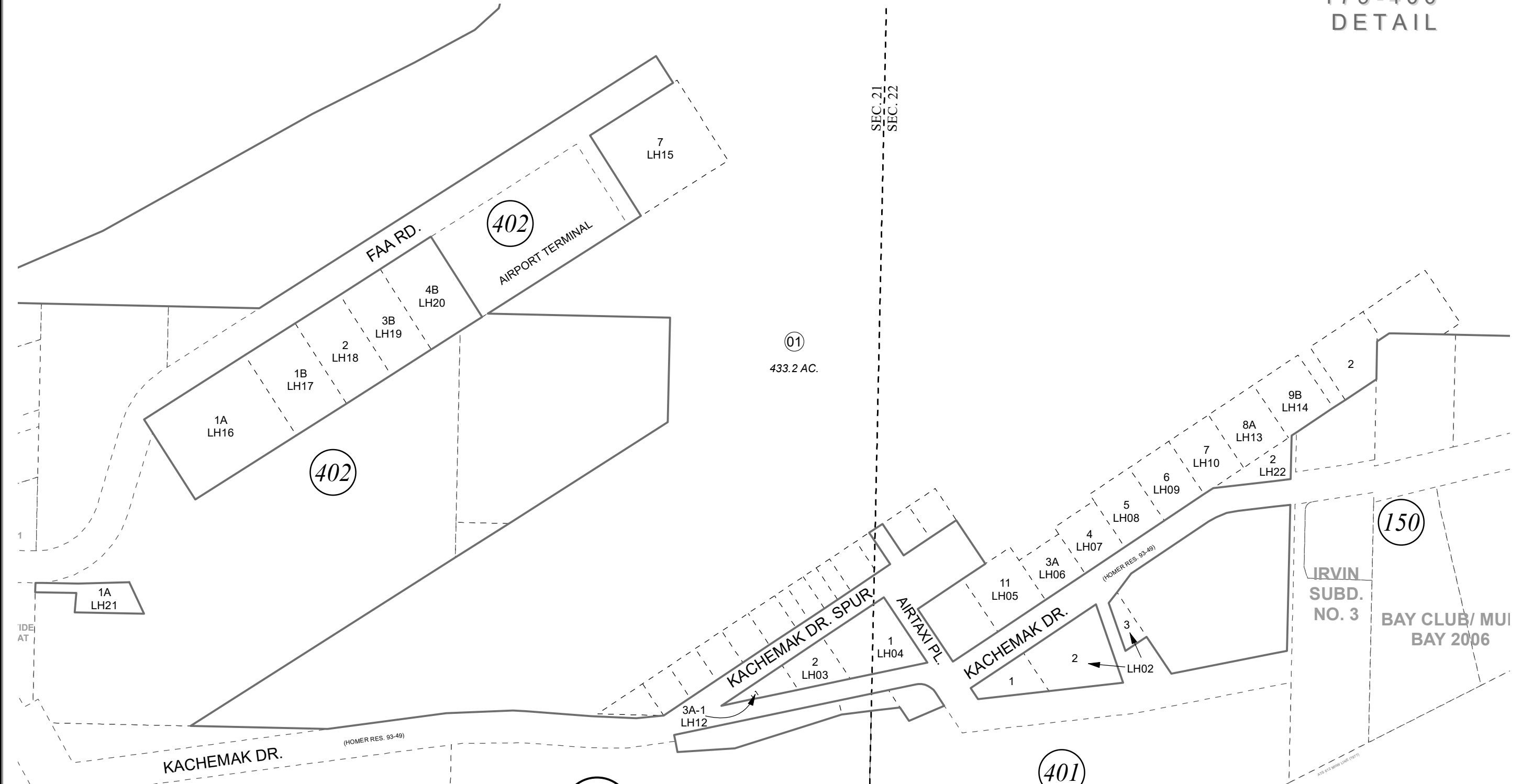


POR. SEC. 21 & 22, T06S, R13W, S.M.

179-400
DETAIL



FEBRUARY 7, 2020

For 2020 assessment roll		
Delete	Add	Revise
To		
LH22		

BK
181

Assessor's Map
Kenai Peninsula Borough

HOMER AIRPORT LAND OCCUPANCY
NOTE: HOMER AIRPORT LAND LEASE LOTS
RESIDE ON PARCEL NO. 179-400-01

This map is prepared for Kenai Peninsula Borough Assessing Dept. use only and is not intended for conveyance nor is it a survey.
Note- Assessor's block Numbers Shown in Elipses
Assessor's Parcel Numbers Shown in Circles