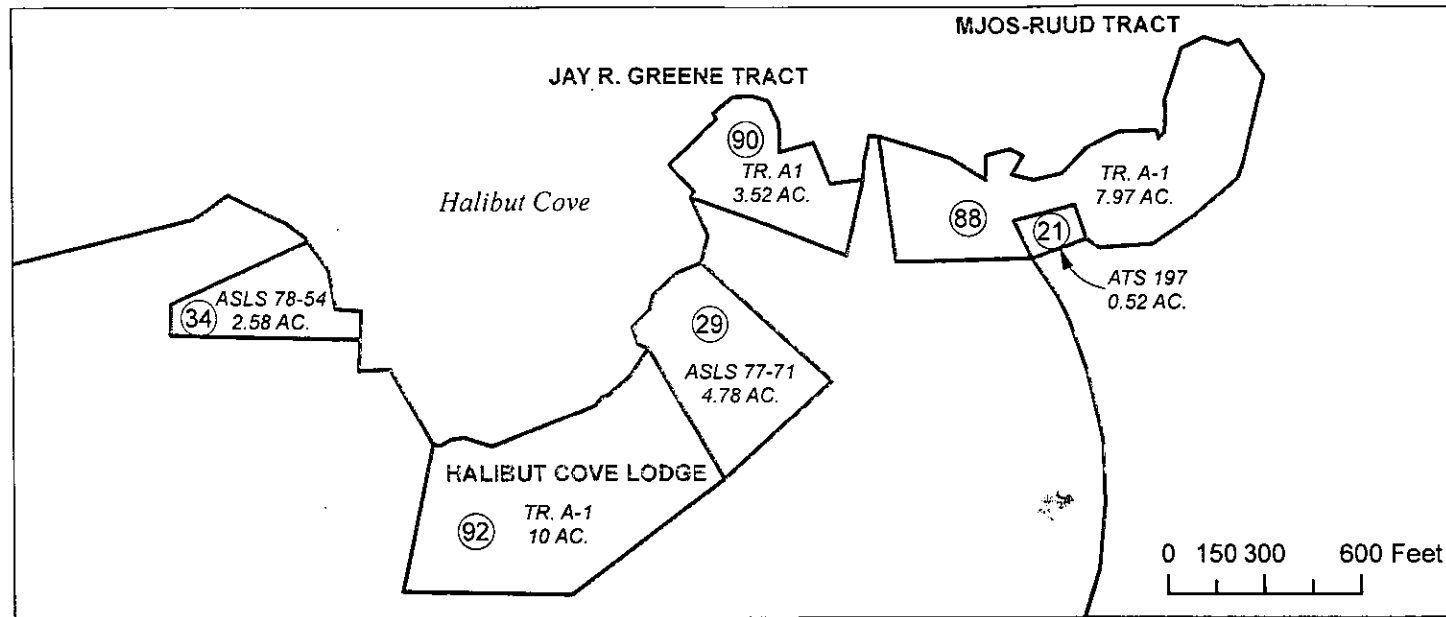
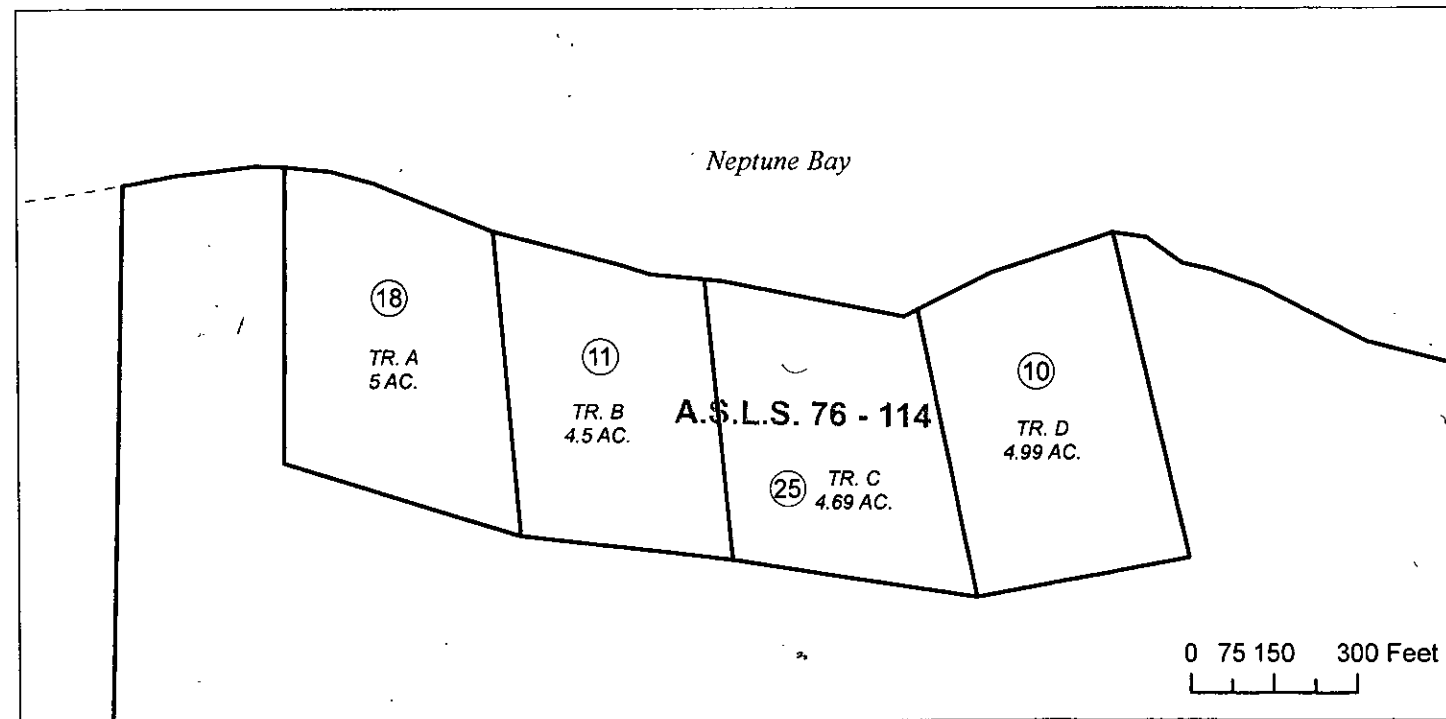


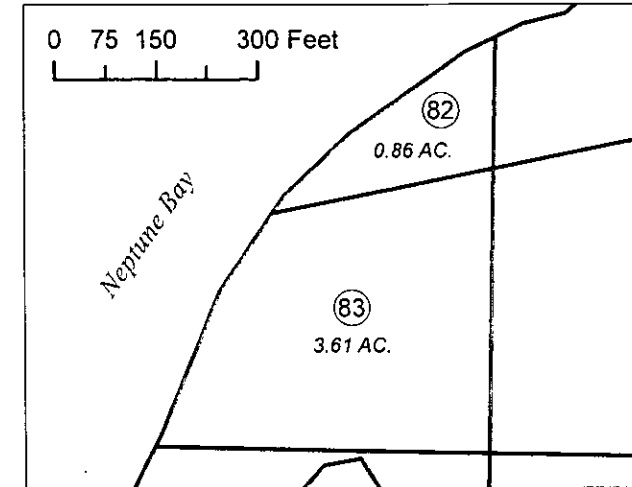
DETAIL A



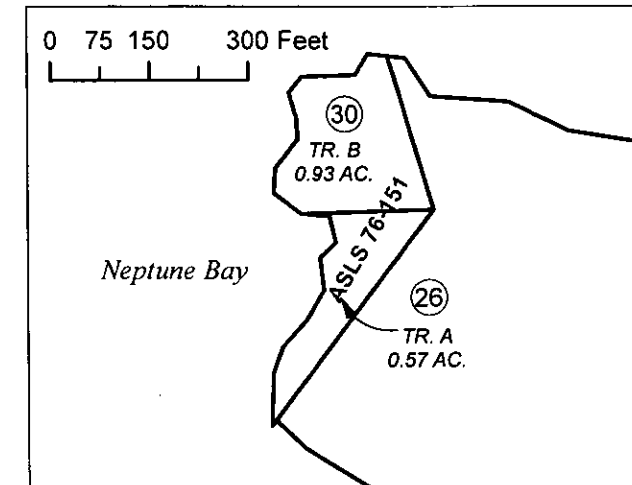
DETAIL B



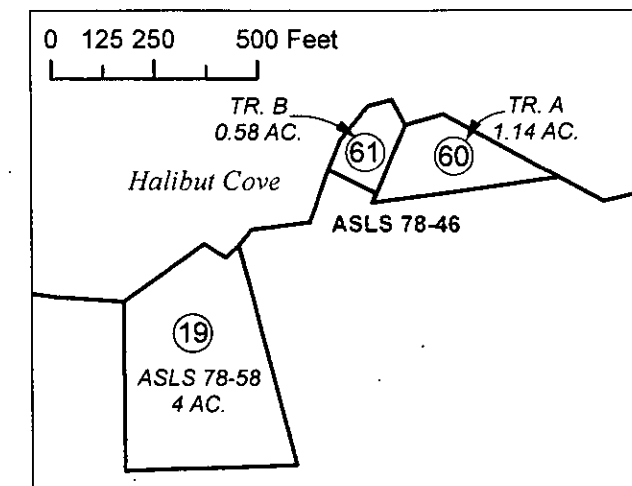
DETAIL C



DETAIL D



DETAIL E



DECEMBER 15, 2011

For 2012 assessment roll		
Delete	Add	Revise
To		
07,07	92	
(DETAIL A)		

Assessor's Map
Kenai Peninsula Borough

This map is prepared for Kenai Peninsula Borough Assessing Dept. use only and is not intended for conveyance nor is it a survey.

Note- Assessor's block Numbers Shown in Ellipses
Assessor's Parcel Numbers Shown in Circles