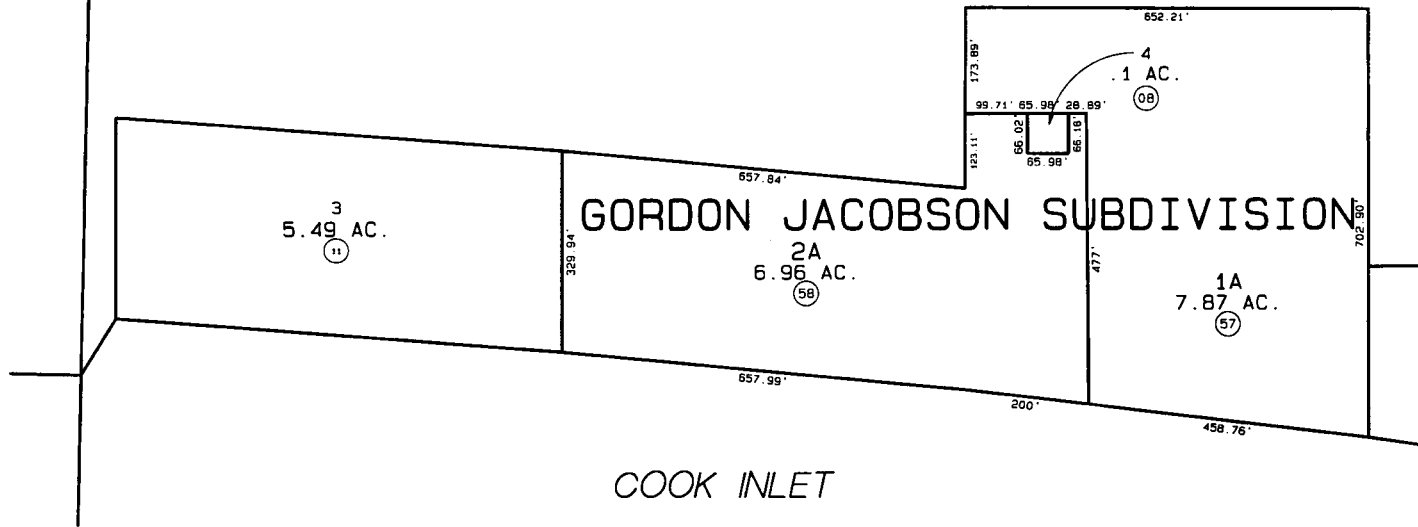


U.S.S. 4549



DATE: NOV. 21, 1997

FOR 19 <u>98</u> ASSESSMENT ROLL		
DELETE	ADD	REVISED
TO		
9,10	57,58	

Assessor's Map
Kenai Peninsula Borough

U.S.S. 4549 AN004549
GORDON JACOBSON SUB AN940148

THIS MAP IS PREPARED
FOR KENAI PENINSULA
BOROUGH ASSESSING DEPT.
USE ONLY AND IS NOT
INTENDED FOR ANY
OTHER USE OR REPRESENTATION

NOTE - Assessor's Block Numbers Shown In Ellipses
Assessor's Parcel Numbers Shown In Circles