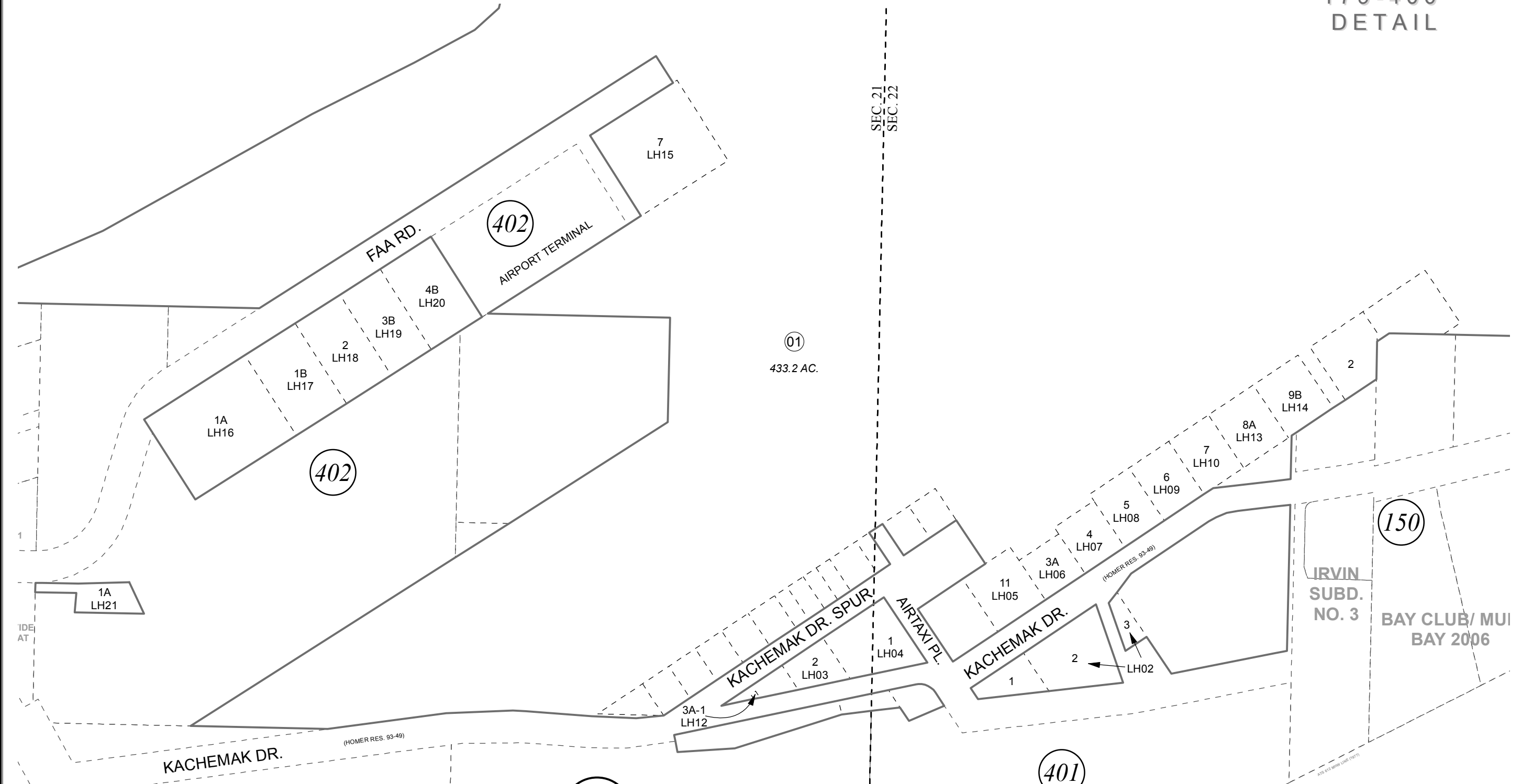


POR. SEC. 21 & 22, T06S, R13W, S.M.

179-400  
DETAIL



FEBRUARY 5, 2019

For 2019 assessment roll		
Delete	Add	Revise
	To	
LH01		LH02

**BK**  
**181**

Assessor's Map  
Kenai Peninsula Borough

### HOMER AIRPORT LAND OCCUPANCY

NOTE: HOMER AIRPORT LAND LEASE LOTS  
RESIDE ON PARCEL NO. 179-400-01



0 200 400 Feet

This map is prepared for Kenai Peninsula Borough Assessing Dept. use only and is not intended for conveyance nor is it a survey.

Note- Assessor's block Numbers Shown in Elipses  
Assessor's Parcel Numbers Shown in Circles