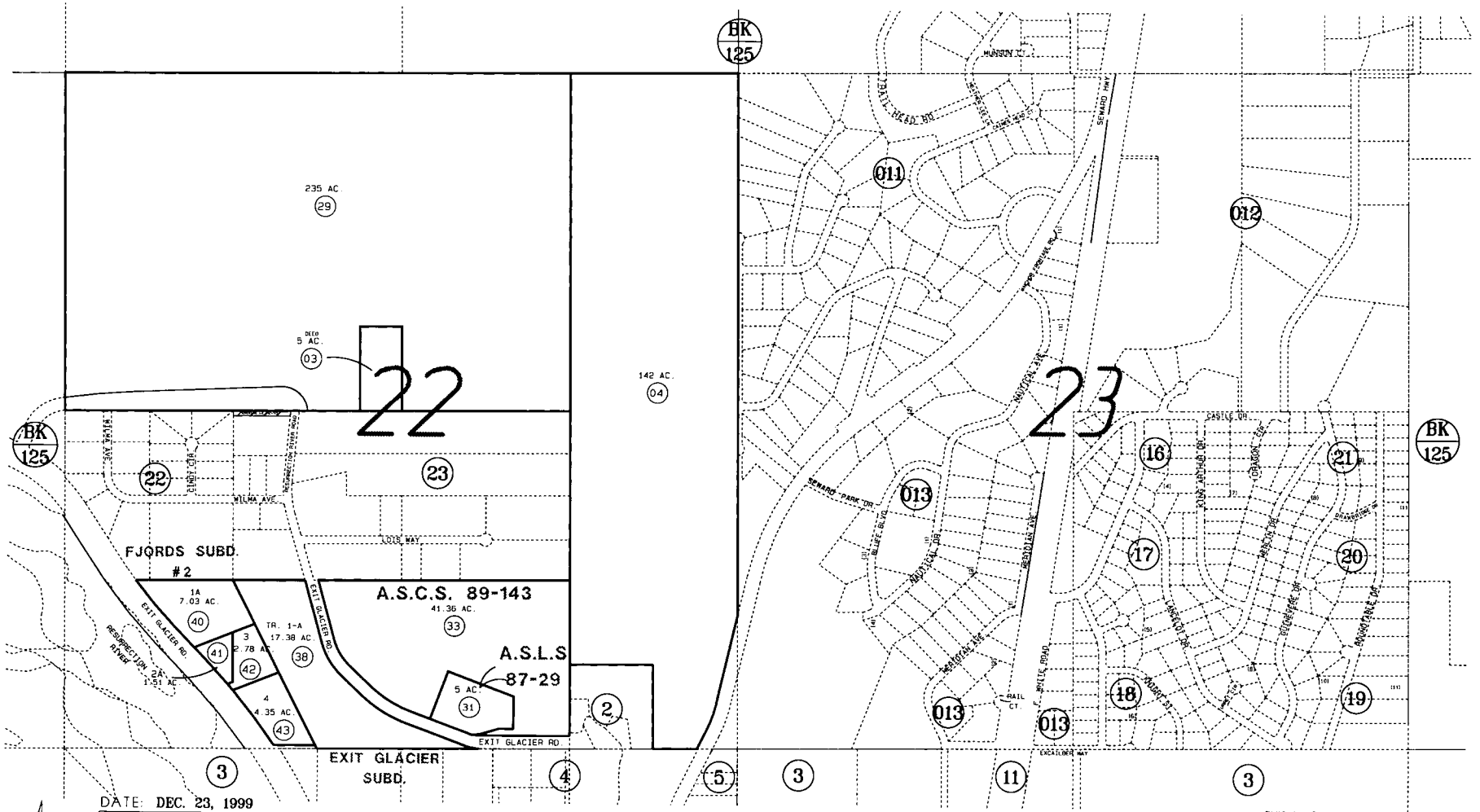


SEC. 22 & 23, T1N, R1W, SEWARD MERIDIAN

144-010



DATE: DEC. 23, 1999

FOR 2000 ASSESSMENT ROLL		
DELETE	ADD	REVISED

36, TO 40-43
37,39

Assessor's Map
Kenai Peninsula Borough

ALASKA STATE LAND SURVEY 87-029
ALASKA STATE CADASTRAL SURVEY 89-143
FJORDS SUB
EXIT GLACIER SUB
FJORDS SUB #2

SW870020
SW900008
SW970007
SW970012
SW990017

THIS MAP IS PREPARED FOR KENAI PENINSULA BOROUGH ASSESSING DEPT. USE ONLY AND IS NOT INTENDED FOR CONVEYANCE NOR IS IT A SURVEY

NOTE - Assessor's Block Numbers Shown in Ellipses
Assessor's Parcel Numbers Shown in Circles