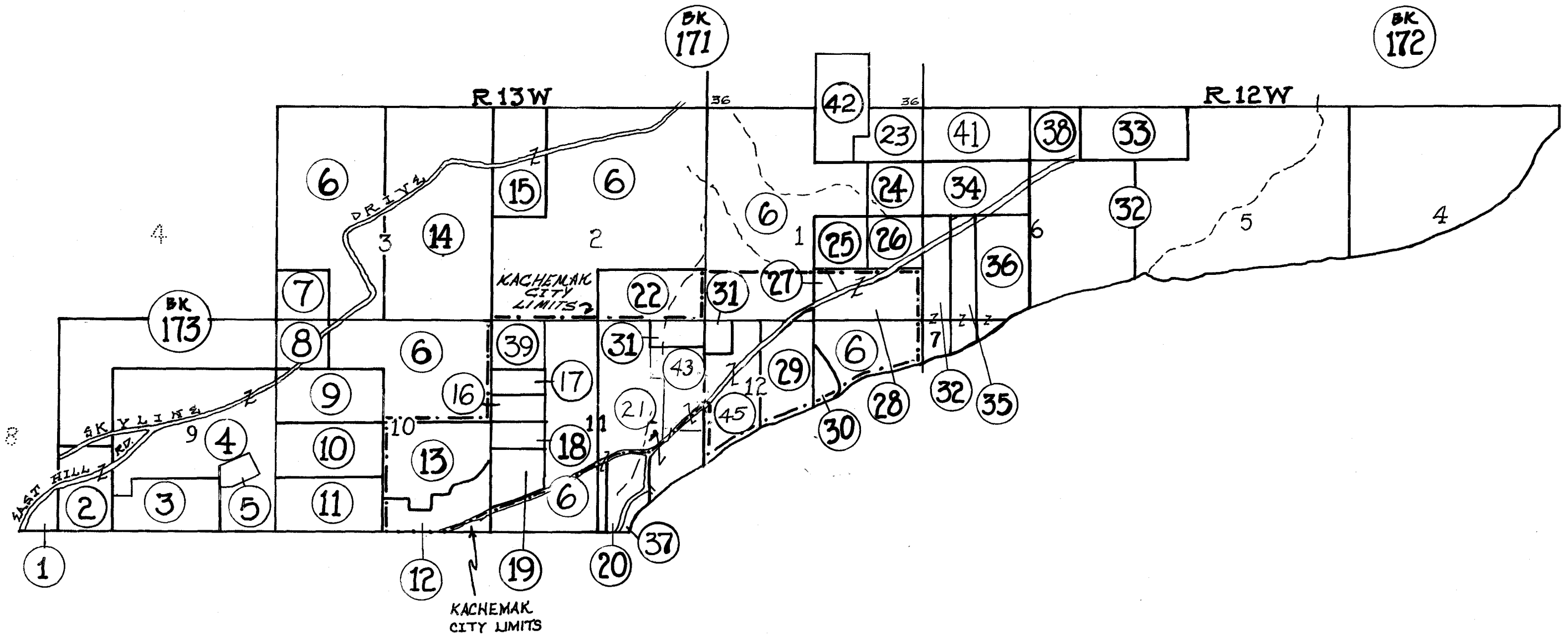


POR. T6S, 12W & POR. 13W, S.M.  
 & POR. SEC. 36, T5S, R13W, S.M.



INDEX PAGE  
 BOOK 174  
 ASSESSOR'S MAPS  
 Kenai Peninsula Borough, Alaska

\* KACHEMAK CITY LIMITS PER STATE OF ALASKA DEPT. OF COMMUNITY & REGIONAL. NOTE - Assessor's Block Numbers Shown in Ellipses