

KENAI PENINSULA BOROUGH
PLANNING COMMISSION RESOLUTION

RESOLUTION SN 2011-18

RENAMING CERTAIN PUBLIC RIGHTS-OF-WAY WITHIN SECTION 2, T 4S, R 14W; SEWARD
MERIDIAN, AK; WITHIN EMERGENCY SERVICE NUMBER (ESN) 401

RENAMING CERTAIN PUBLIC RIGHTS-OF-WAY WITHIN SECTIONS 21 & 28, T 5S, R 12W; SEWARD
MERIDIAN, AK; WITHIN EMERGENCY SERVICE NUMBER (ESN) 202

WHEREAS, a procedure has been developed to help implement the Enhanced 9-1-1 Street Naming and Addressing project; and

WHEREAS, eliminating duplicate and sound-alike street names will enable 9-1-1 Emergency Services to respond to emergencies in an efficient timely manner, thereby avoiding delays in providing necessary emergency services; and

WHEREAS, on September 26, 2011 public hearings were held by the Kenai Peninsula Borough Planning Commission to address all concerns about the proposed street name changes; and

WHEREAS, Chapter 14.10 of the Kenai Peninsula Borough Code of Ordinances authorizes the Planning Commission to accomplish street name changes by Resolution.

NOW, THEREFORE, BE IT RESOLVED BY THE PLANNING COMMISSION OF THE KENAI PENINSULA BOROUGH:

Section 1. That the rights-of-way listed below are renamed as follows:

DESCRIPTION	FROM	TO	BASE MAP
a. Tall Tree Rd named by plat HM2004043 Long Reach Subdivision; T 4S R 14W SECTION 2; Seward Meridian, AK; in the Happy Valley/ Nikolaevsk Communities; ESN 401	Tall Tree Rd	Tall Tree Ave	AR03
b. Yukon Ave (north of East End Rd) originally named by plat HM0681021 Spruce Wood Subdivision; T 5S R 12W SECTION 28; Seward Meridian, AK; off of East End Rd in the Fritz Creek community; ESN 202	Yukon Ave	Yukon St	AR59
c. Yukon Ave (south of East End Rd) originally named by plat HM0742000 Fritz Creek Drive Subdivision; T 5S R 12W SECTION 28; Seward Meridian, AK; off of East End Rd in the Fritz Creek community; ESN 202	Yukon Ave	Sorensen St	AR59
d. Saber St originally named by plat HM0690338 Spruce Wood Subdivision 1969 Addition; T 5S R 12W SECTION 28; Seward Meridian, AK; off of Yukon Ave in the Fritz Creek community; ESN 202	Saber St	Saber Ave	AR59

e. Tok St originally named by plat HM0690338 Spruce Wood Subdivision 1969 Addition; T 5S R 12W SECTION 28; Seward Meridian, AK; off of Yukon Ave in the Fritz Creek community; ESN 202	Tok St	Tok Ave	AR59
f. Stuart St originally named by plat HM0742000 Fritz Creek Drive Subdivision; T 5S R 12W SECTION 28; Seward Meridian, AK; off of East End Rd in the Fritz Creek community; ESN 202	Stuart St	Stuart Ave	AR59
g. Scott St originally named by plat HM0742000 Fritz Creek Drive Subdivision; T 5S R 12W SECTION 28; Seward Meridian, AK; off of Yukon Ave in the Fritz Creek community; ESN 202	Scott St	Scott Ave	AR59
h. Finch St originally named by plat HM0721412 Greenwood Heights Subdivision; T 5S R 12W SECTION 21; Seward Meridian, AK; off of Greer Rd in the Fritz Creek community; ESN 202	Finch St	Finch Ave	AR59

Section 2. That according to Kenai Peninsula Borough Code of Ordinance 14.10.030, the official street name map, 1:500 scale series base maps, Anchor River 03 & 59 are hereby amended to reflect these changes.

Section 3. That the map showing the location of the renamed rights-of-way be attached to, and made a permanent part of this resolution.

Section 4. That this Resolution takes effect immediately upon adoption.

ADOPTED BY THE PLANNING COMMISSION OF THE KENAI PENINSULA BOROUGH THIS 10th DAY OF October 2011.


Philip Bryson, Chairperson
Planning Commission

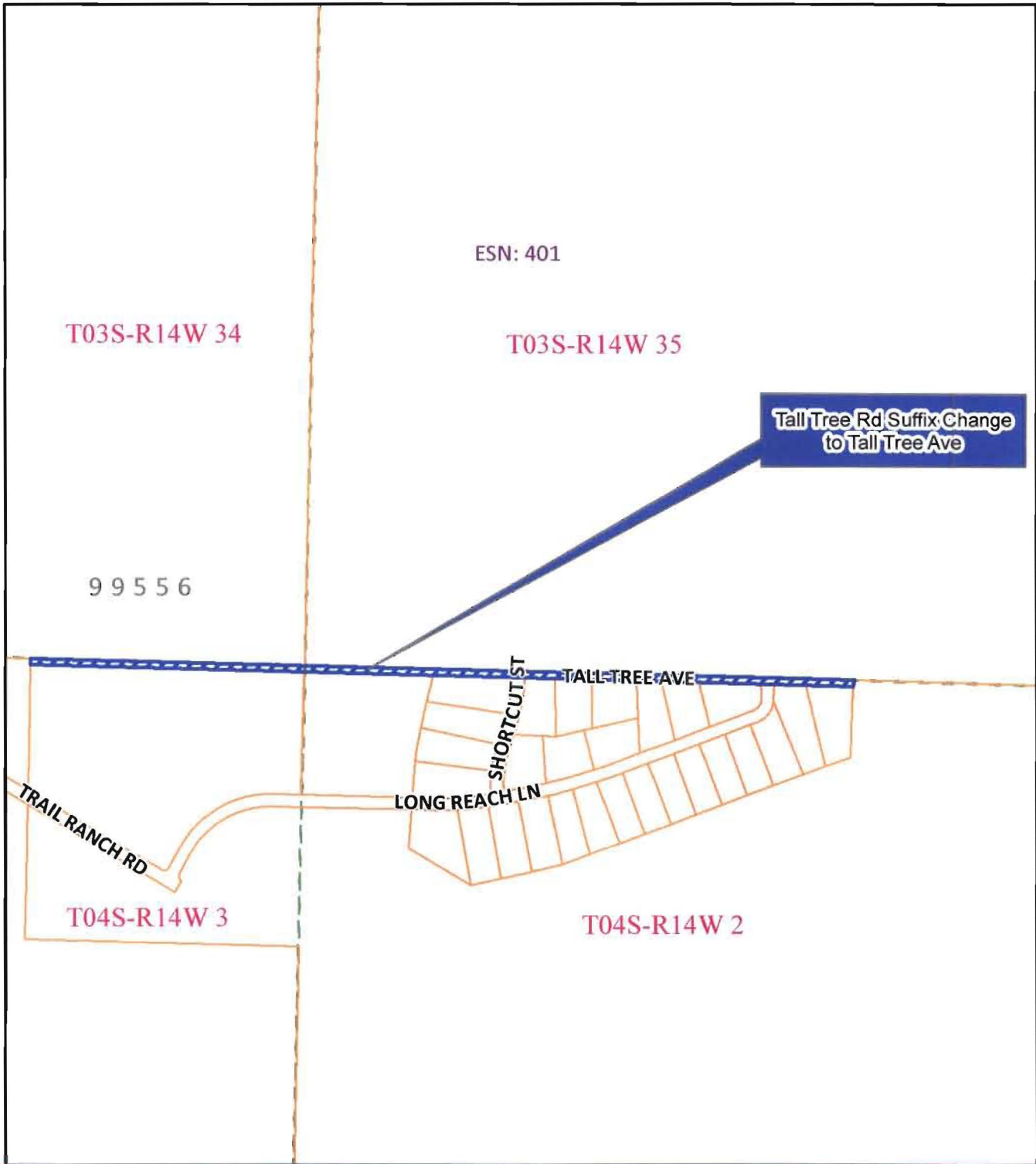
State of Alaska
Kenai Peninsula Borough

Signed and sworn to (or affirmed) in my presence this 10 day of October 2011 by Philip Bryson


Notary Public



My Commission expires 3-7-13



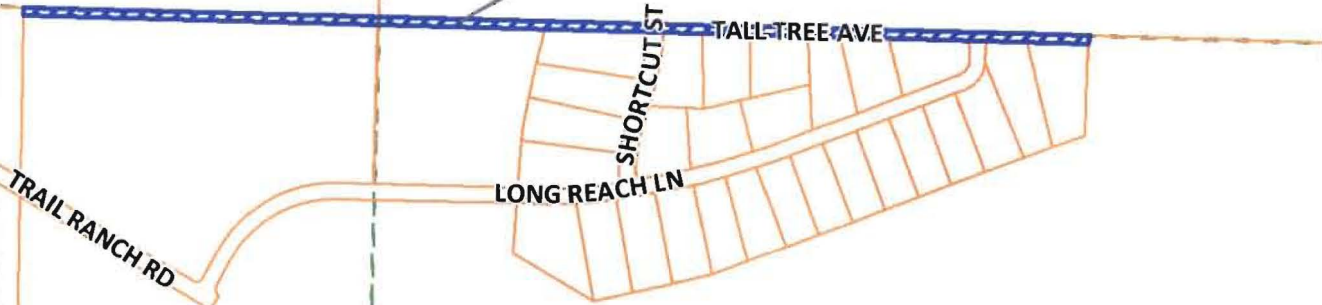
T03S-R14W 34

ESN: 401

T03S-R14W 35

Tall Tree Rd Suffix Change
to Tall Tree Ave

99556



TRAIL RANCH RD

LONG REACH LN

SHORTCUT ST

TALL TREE AVE

T04S-R14W 3

T04S-R14W 2



Kenai Peninsula Borough Planning Commission

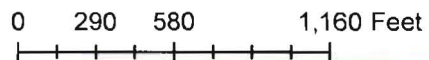


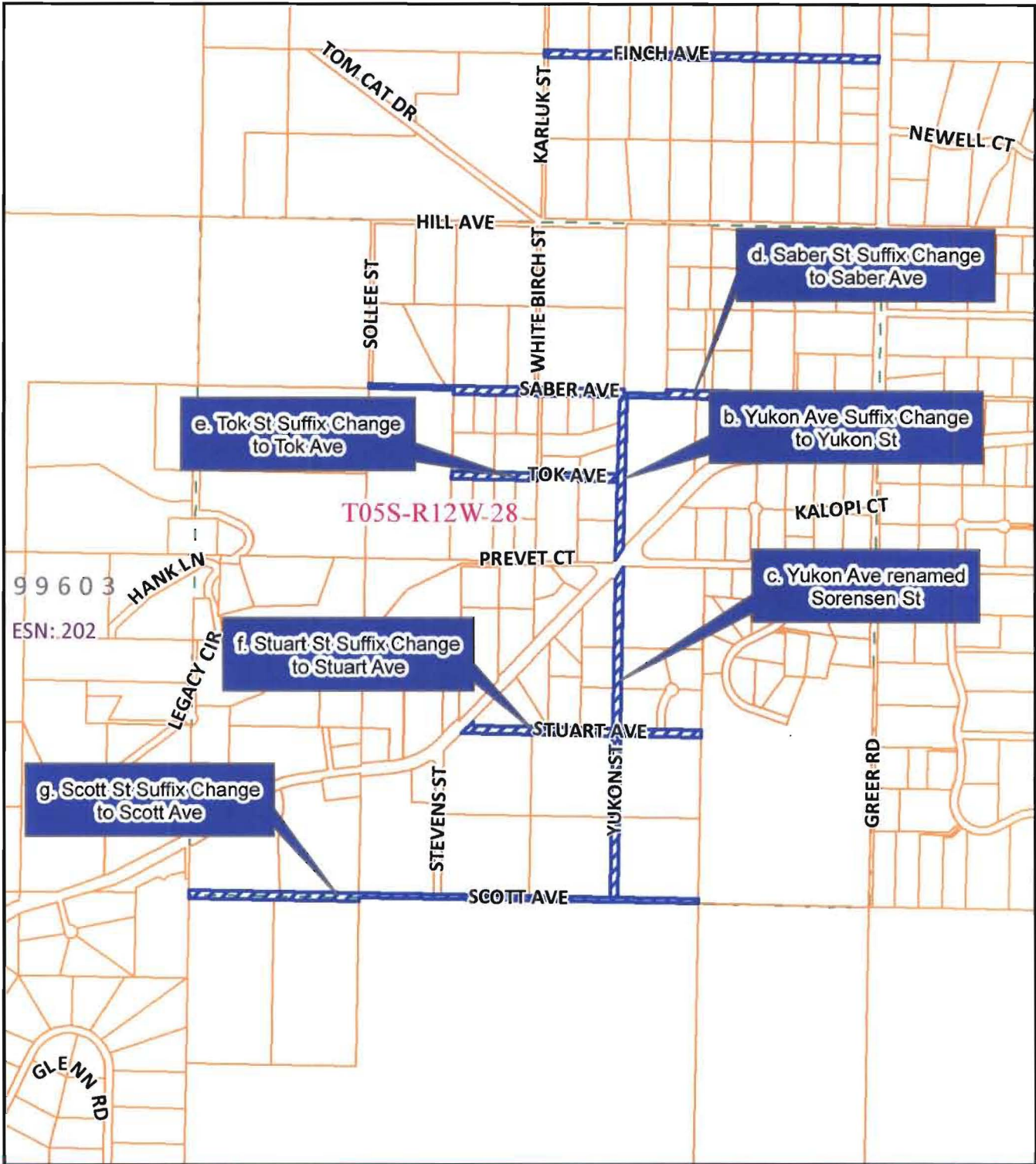
The information depicted hereon is for a graphical representation only of best available sources. The Kenai Peninsula Borough assumes no responsibility for any errors on this map.

Street Name Resolution 2011-18

Tall Tree Rd to Tall Tree Ave

09/26/2011





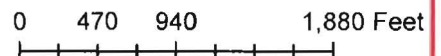
The information depicted hereon is for a graphical representation only of best available sources. The Kenai Peninsula Borough assumes no responsibility for any errors on this map.

09/26/2011

Kenai Peninsula Borough Planning Commission

Street Name Resolution 2011-18

- b. Yukon Ave (north of East End Rd) to Yukon St**
- c. Yukon Ave (south of East End Rd) to Sorensen St**
- d. Saber St to Saber Ave**
- e. Tok St to Tok Ave**
- f. Stuart St to Stuart Ave**
- g. Scott St to Scott Ave**





The information depicted hereon is for a graphical representation only of best available sources. The Kenai Peninsula Borough assumes no responsibility for any errors on this map.

09/26/2011

Kenai Peninsula Borough Planning Commission

Street Name Resolution 2011-18

Finch St to Finch Ave

