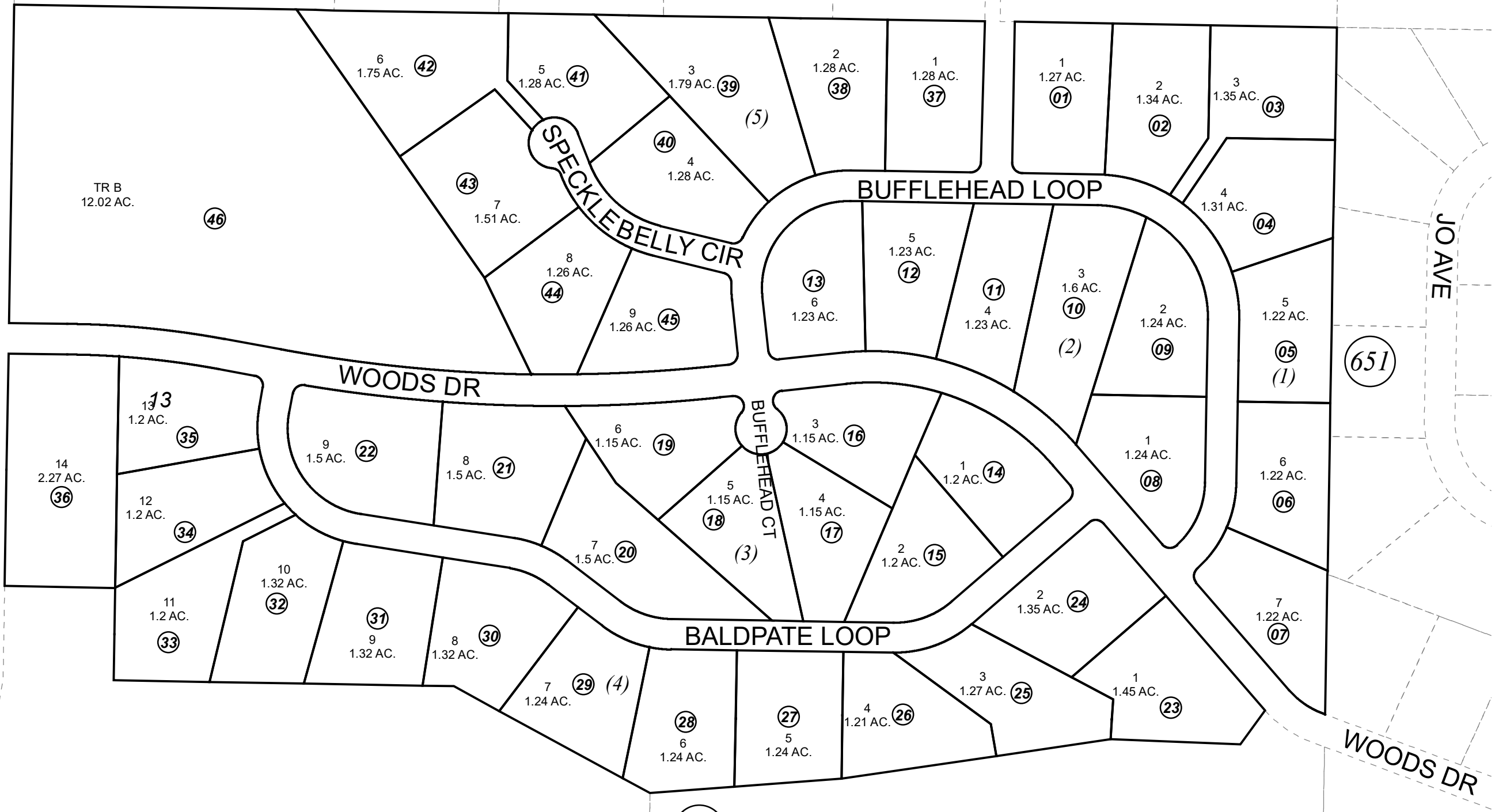


SE1/4 SEC. 13, T05N, R11W, S.M.

530

055-035



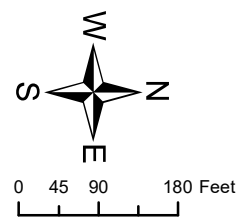
032
24

651

032

DECEMBER 27, 2019

For 2020 assessment roll		
Delete	Add	Revise
To		
02,43-45 (ACREAGE CHANGE)		



Assessor's Map
Kenai Peninsula Borough

KN2012032 WIDGEON WOODS PHASE 2
KN2019065RS RECORD OF SURVEY WIDGEON WOODS PHASE 2

This map is prepared for Kenai Peninsula Borough Assessing Dept. use only and is not intended for conveyance nor is it a survey.
Note- Assessor's block Numbers Shown in Ellipses
Assessor's Parcel Numbers Shown in Circles