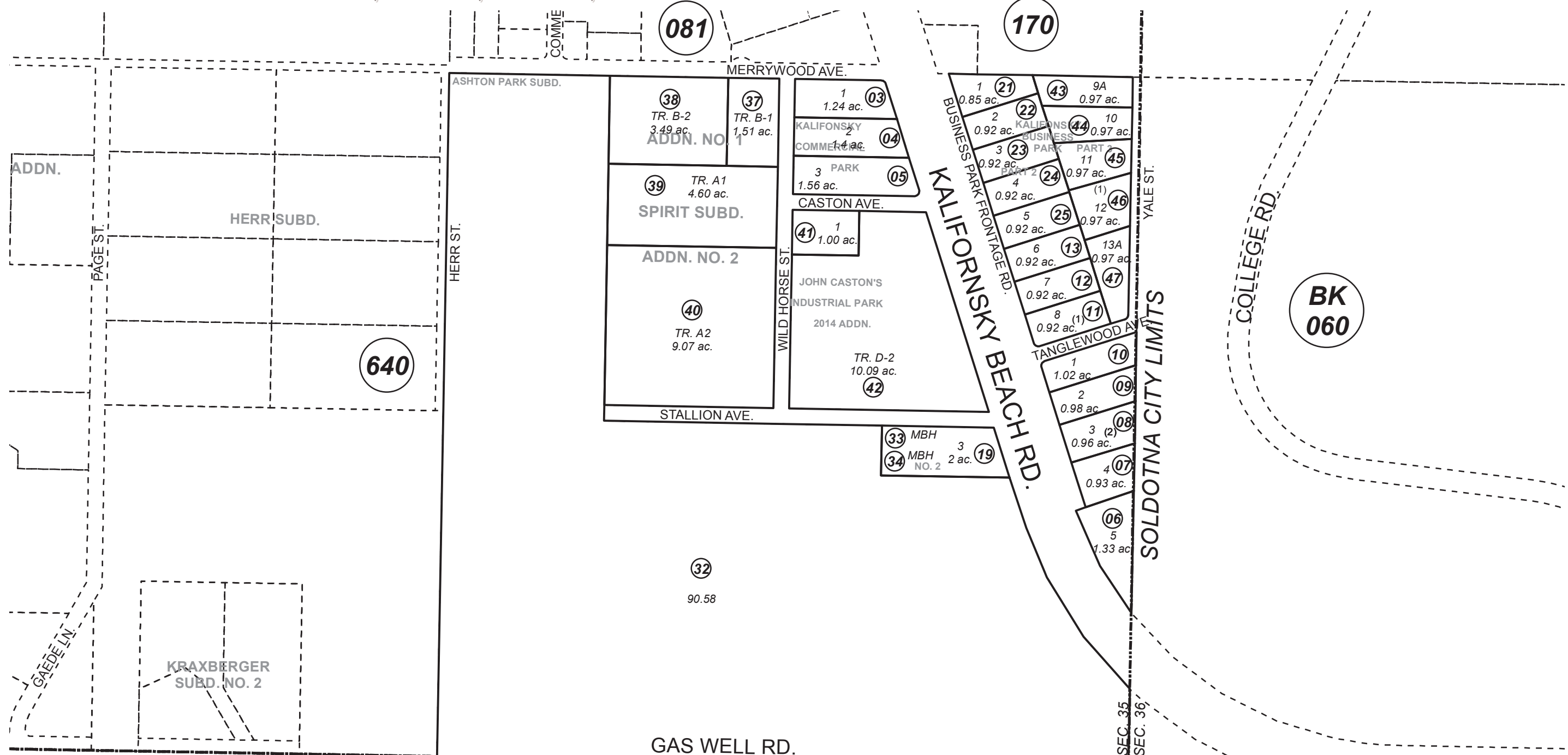


SE1/4 SEC. 35, T05N, R11W, S.M.

055-430



640

081

170

BK 060

BK 131



0 100 200 400 Feet

SEPTEMBER 22, 2017

For 2018 assessment roll		
Delete	Add	Revise
To		
14,26	43,47	

Assessor's Map  
Kenai Peninsula Borough

- KALIFONSKY COMMERCIAL PARK SUB □KN0780176
- KALIFONSKY BUSINESS PARK SUB □KN0790176
- JOHN CASTONS INDUSTRIAL PARK SUB □KN0820113
- JOHN CASTONS INDUSTRIAL PARK SUB NO 2 □KN0830083
- KALIFONSKY BUSINESS PARK SUB PART 2 □KN0830093
- JOHN CASTONS INDUSTRIAL PARK SUB NO 3 □KN0840232
- SPIRIT SUB □KN0940003
- JOHN CASTONS INDUSTRIAL PARK SUB NO 4 □KN2002109
- MERRYWOOD AVE RIGHT OF WAY ACQUISITION KN2003098
- JOHN CASTONS INDUSTRIAL PARK SUB NO 5 □KN2005070
- SPIRIT SUB ADDN NO 1 KN2006089
- SPIRIT SUB ADDN NO 2 KN2007131
- JOHN CASTONS INDUSTRIAL PARK SUB 2014 ADDN □KN2016070
- KALIFONSKY BUSINESS PARK SUB PART 3 KN2017049

Note- Assessor's block Numbers Shown in Elipses  
Assessor's Parcel Numbers Shown in Circles

This map is prepared for Kenai Peninsula Borough Assessing Dept. use only and is not intended for conveyance nor is it a survey.