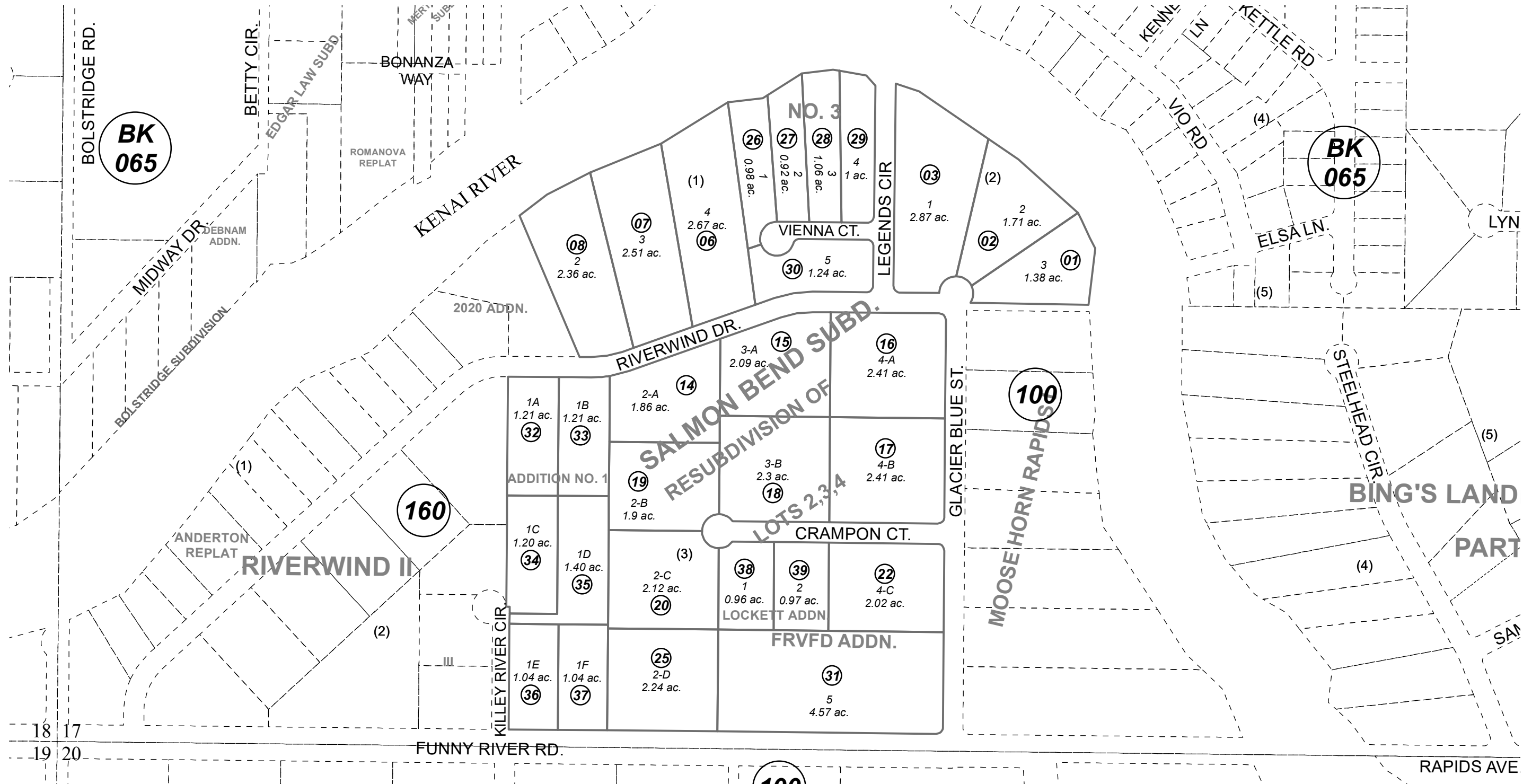


POR. SEC. 17, T05N, R08W, S.M.

066-170



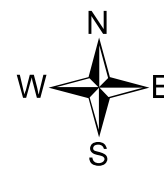
**BK**  
**065**

**BK**  
**065**

**160**

**100**

**100**



0 100 200 400 Feet

NOVEMBER 9, 2021

For 2022 assessment roll		
Delete	Add	Revise
To		
09	066160+	

Assessor's Map  
Kenai Peninsula Borough

SALMON BEND SUB KN0730078  
 SALMON BEND RESUB OF LOTS 2 THRU 4 BLK 3 KN0770032  
 SALMON BEND RESUB OF LOTS 2-4 BLOCK 3 KN0770032  
 SALMON BEND SUB NO 3 KN0830264  
 SALMON BEND SUB FRVFD ADDN KN2002024  
 SALMON BEND SUB ADDN NO 1 KN2002082  
 SALMON BEND SUB LOCKETT ADDN KN2006004

This map is prepared for Kenai Peninsula Borough Assessing Dept. use only and is not intended for conveyance nor is it a survey.

Note- Assessor's block Numbers Shown in Ellipses  
Assessor's Parcel Numbers Shown in Circles