

SE1/4 SE1/4 SEC. 17 & NE1/4 NE1/4 SEC. 20, T06S, R13W, S.M.

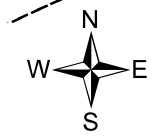
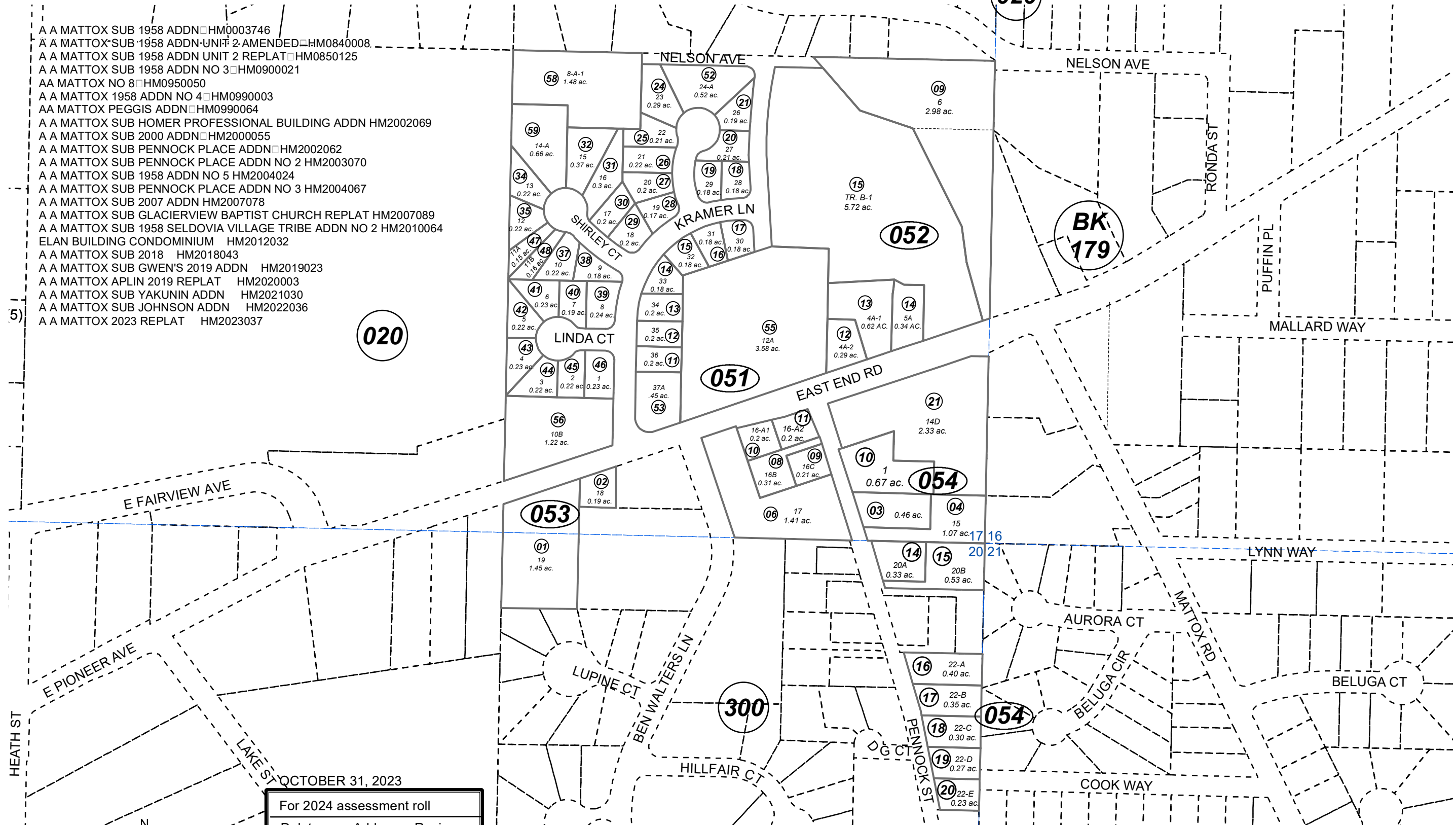
177-050

020

- A A MATTOX SUB 1958 ADDN □ HM0003746
- A A MATTOX SUB 1958 ADDN UNIT 2 AMENDED □ HM0840008
- A A MATTOX SUB 1958 ADDN UNIT 2 REPLAT □ HM0850125
- A A MATTOX SUB 1958 ADDN NO 3 □ HM0900021
- AA MATTOX NO 8 □ HM0950050
- A A MATTOX 1958 ADDN NO 4 □ HM0990003
- AA MATTOX PEGGIS ADDN □ HM0990064
- A A MATTOX SUB HOMER PROFESSIONAL BUILDING ADDN HM2002069
- A A MATTOX SUB 2000 ADDN □ HM2000055
- A A MATTOX SUB PENNOCK PLACE ADDN □ HM2002062
- A A MATTOX SUB PENNOCK PLACE ADDN NO 2 HM2003070
- A A MATTOX SUB 1958 ADDN NO 5 HM2004024
- A A MATTOX SUB PENNOCK PLACE ADDN NO 3 HM2004067
- A A MATTOX SUB 2007 ADDN HM2007078
- A A MATTOX SUB GLACIERVIEW BAPTIST CHURCH REPLAT HM2007089
- A A MATTOX SUB 1958 SELDOVIA VILLAGE TRIBE ADDN NO 2 HM2010064
- ELAN BUILDING CONDOMINIUM HM2012032
- A A MATTOX SUB 2018 HM2018043
- A A MATTOX SUB GWEN'S 2019 ADDN HM2019023
- A A MATTOX APLIN 2019 REPLAT HM2020003
- A A MATTOX SUB YAKUNIN ADDN HM2021030
- A A MATTOX SUB JOHNSON ADDN HM2022036
- A A MATTOX 2023 REPLAT HM2023037

020

5)



0 50 100 200 Feet

OCTOBER 31, 2023

For 2024 assessment roll		
Delete	Add	Revise
	To	
054-09,		
054-12,		
054-13	054-21	

Assessor's Map  
Kenai Peninsula Borough

This map is prepared for Kenai Peninsula Borough Assessing Dept. use only and is not intended for conveyance nor is it a survey.

Note- Assessor's block Numbers Shown in Ellipses  
Assessor's Parcel Numbers Shown in Circles