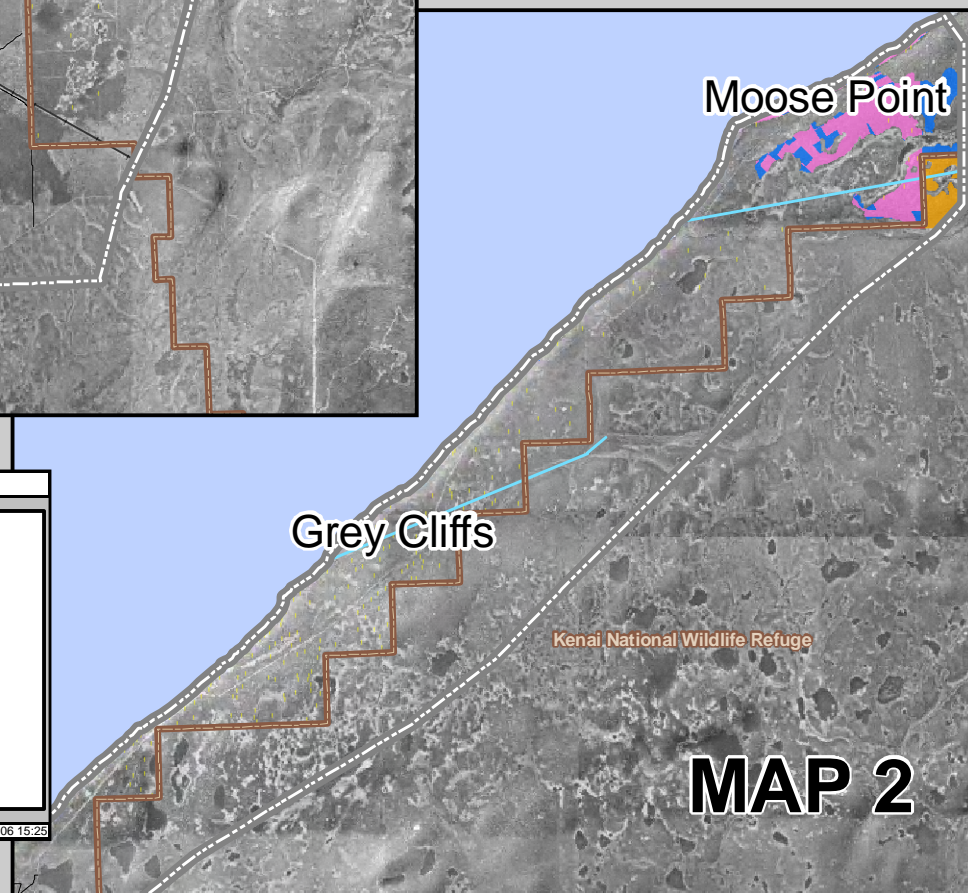
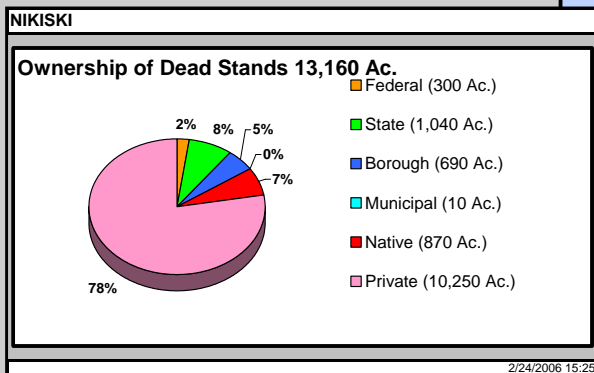
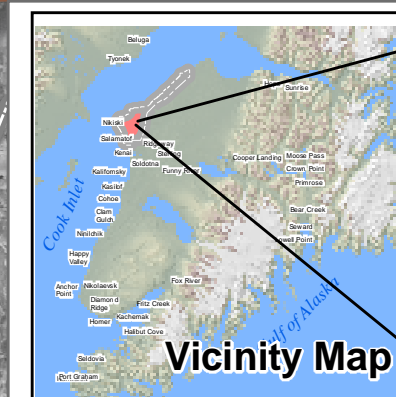
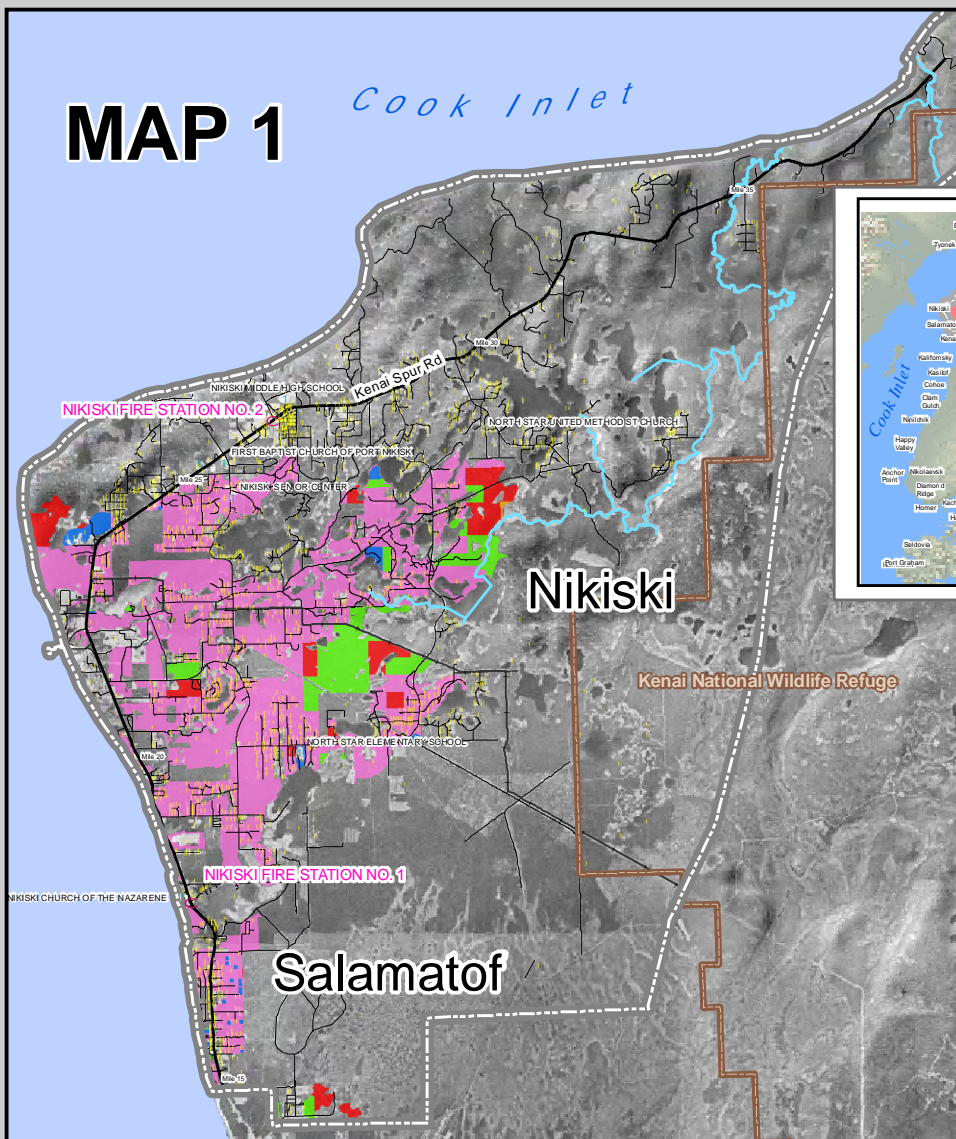


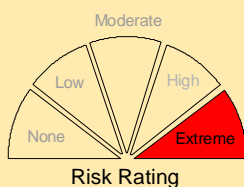
# MAP 1



**Community Data**

- Community Wildfire Protection Plan Boundary
- Main Highway (24 Miles)
- Secondary Road (258 Miles)
- Powerlines (11 Miles)
- Anadromous Streams (35 miles)
- Emergency Services
- Emergency Shelters
- Parcels with Structures

	POPULATION	RESIDENTIAL STRUCTURES	RESIDENTIAL VALUE	INDUSTRIAL VALUE	COMMERCIAL VALUE
Grey Cliff	404	202	\$ 1,300,000		
Nikiski	4,327	1,897	\$ 120,000,000	\$ 330,000,000	\$ 94,000,000
Salamatof	954	300	\$ 20,000,000	\$ 200,000	\$ 8,000,000
	5,685	2,399	141,300,000	330,200,000	102,000,000



## Community Base Map NIKISKI / GREY CLIFFS AREA



Kenai Peninsula Borough (KPB) - Spruce Bark Beetle Mitigation Program (SBBMP) KPB or SBBMP are not responsible for errors, omissions, or deletions on this map. Discrepancies in feature or boundary alignments are due to use of data from different sources. This map is not a legal representation, is produced for general informational purposes only and is not for sale.

Path: M:\projects\COMMUNITY\_RISK\Map\COMMUNITY\_BM\_Anchor.mxd By: Gary Greenberg & Marvin Rude

